



# GATE 2024 Exam Solutions



## ELECTRONICS ENGINEERING

*Exam held on*  
**11/02/2024**  
**Forenoon Session**



**Corporate Office :** 44-A/1, Kalu Sarai, New Delhi - 110016  
**MADE EASY Centres :** • Delhi • Hyderabad • Bhopal • Jaipur • Pune • Kolkata



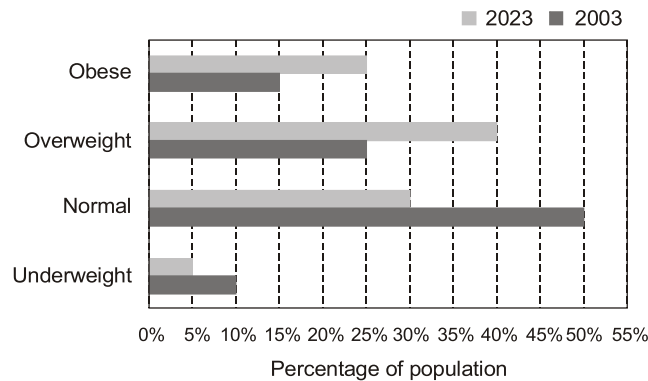
**9021300500**



**www.madeeasy.in**

**SECTION - A**
**GENERAL APTITUDE**

**Q.1** The bar chart shows the data for the percentage of population falling into different categories based on Body Mass Index (BMI) in 2003 and 2023.



Based on the data provided, which one of the following options is INCORRECT?

- (a) The ratio of the percentage of population falling into overweight category to the percentage of population falling into normal category has increased in 20 years.
- (b) The ratio of the percentage of population falling into obese category to the percentage of population falling into normal category has decreased in 20 years.
- (c) The ratio of the percentage of population falling into underweight category to the percentage of population falling into normal category has decreased in 20 years.
- (d) The percentage of population falling into normal category has decreased in 20 years.

**Ans. (b)**

**End of Solution**

**Q.2** Sequence the following sentences (P, Q, R, S) in a coherent passage:

P: Shifu's student exclaimed, "Why do you run since the bull is an illusion?"

Q: Shifu said. "Surely my running away from the bull is also an illusion."

R: Shifu once proclaimed that all life is illusion.

S: One day, when a bull gave him chase. Shifu began running for his life.

- (a) RSPQ
- (b) SPRQ
- (c) SRPQ
- (d) RPQS

**Ans. (a)**

**End of Solution**

**Q.3** Five years ago, the ratio of Aman's age to his father's age was 1:4, and five years from now, the ratio will be 2:5. What was his father's age when Aman was born?

- (a) 32 years
- (b) 35 years
- (c) 28 years
- (d) 30 year

**LAUNCHING**

**MADE EASY**



## **DYNAMIC & IMPROVED FEATURES**

---



More efficient teaching



Improved content



Interactive technology



Affordable fee structure



New courses for GATE, ESE, UGC, SSC & other competitive Exams



Basic concepts of engineering for college students



Integrated offline & online batches



Students centric approach



Backup class provision



Skill and industry oriented courses

**9021300500** **www.madeeasy.in**

Delhi | Bhopal | Jaipur | Hyderabad | Kolkata | Pune

**Ans. (d)**

Five year ago

$$\text{Son's age} = x$$

$$\text{Father's age} = 4x$$

Five year after

$$\text{Son's age} = x + 10$$

$$\frac{x+10}{4x+10} = \frac{2}{5}$$

$$5x + 50 = 8x + 20$$

$$3x = 30$$

$$x = 10$$

Son's age five year ago = 10

Father's age five year ago = 40

At the time of son's birth father's age = 40 - 10 = 30 year

**End of Solution**

**Q.4** The greatest prime factor of  $(3^{199} - 3^{196})$  is

(a) 11

(b) 13

(c) 3

(d) 17

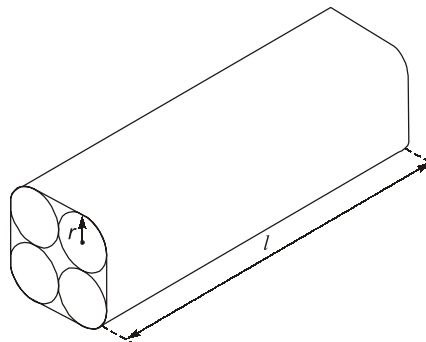
**Ans. (b)**

$$= 3^{196}(3^3 - 1) = 3^{196} \times 26 = 2 \times 3^{196} \times 13$$

Highest prime factors = 13

**End of Solution**

**Q.5** Four identical cylindrical chalk-sticks, each of radius  $r = 0.5$  cm and length  $l = 10$  cm, are bound tightly together using a duct tape as shown in the following figure



The width of the duct tape is equal to the length of the chalk-stick. The area (in  $\text{cm}^2$ ) of the duct tape required to wrap the bundle of chalk-sticks once, is

(a)  $10(8 + \pi)$

(b)  $20(4 + \pi)$

(c)  $10(4 + \pi)$

(d)  $20(8 + \pi)$

**Ans. (c)**

**End of Solution**







*Announcing*

# FOUNDATION COURSE

For **ESE+GATE 2025** • **GATE 2025**

The foundation batches are taught comprehensively which cover the requirements of all technical-syllabus based exams.

## OFFLINE BATCHES AT DELHI

Commencing from

- **EE, EC & IN** : 15<sup>th</sup> Feb & 29<sup>th</sup> Feb
- **CE** : 15<sup>th</sup> Feb & 26<sup>th</sup> Feb
- **CS** : 15<sup>th</sup> Feb & 5<sup>th</sup> Mar
- **ME** : 15<sup>th</sup> Feb & 29<sup>th</sup> Feb

-----  
🌐 [www.madeeasy.in](http://www.madeeasy.in) ☎ 9021300500

## LIVE-ONLINE BATCHES

Commencing from

### Evening Batches : Hinglish

- **CS** : 20<sup>th</sup> Feb
- **EE/EC/IN** : 20<sup>th</sup> Feb
- **CE** : 20<sup>th</sup> Feb
- **ME** : 20<sup>th</sup> Feb

### Evening Batches

**English** : 20<sup>th</sup> Feb

### Morning Batches

**Hinglish** : 22<sup>nd</sup> Feb  
**Stream** : CE

-----  
🌐 [www.madeeasyprime.com](http://www.madeeasyprime.com) ☎ 9021300500

**Low Cost EMI Facility Available**

**Admissions open**

**Delhi Centre** : 44-A/1, Kalu Sarai, Near Hauz Khas Metro Station, New Delhi - 110016 | **Ph** : 9021300500

**MADE EASY Centres** : Delhi | Bhopal | Hyderabad | Jaipur | Kolkata | Pune | 🌐 [www.madeeasy.in](http://www.madeeasy.in)

**Q.8** For a real number  $x > 1$ ,

$$\frac{1}{\log_2 x} + \frac{1}{\log_3 x} + \frac{1}{\log_4 x} = 1$$

The value of  $x$  is

- (a) 24 (b) 12  
(c) 4 (d) 36

**Ans. (a)**

$$\log_x^2 + \log_x^3 + \log_x^4 = 1$$

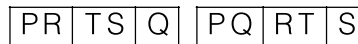
$$\log_x^{24} = 1$$

$$x = 24$$

**End of Solution**

**Q.9** P, Q, R, S, and T have launched a new startup. Two of them are siblings. The office of the startup has just three rooms. All of them agree that the siblings should not share the same room.

If S and Q are single children, and the room allocations shown below are acceptable to all,



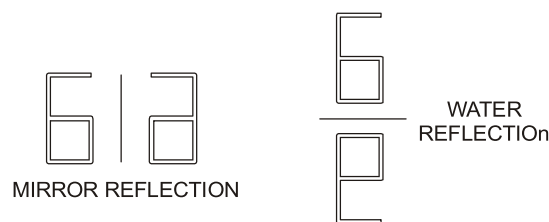
then, which one of the given options is the siblings?

- (a) T and R (b) T and Q  
(c) P and S (d) P and T

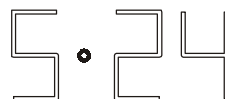
**Ans. (d)**

**End of Solution**

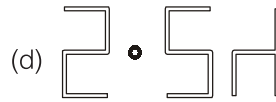
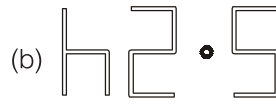
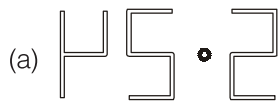
**Q.10** Examples of mirror and water reflections are shown in the figures below:



An object appears as the following image after first reflecting in a mirror and then reflecting on water.



The original object is



Ans. (b)

End of Solution

■■■■





**ESE 2025**

**GATE + ESE 2025**



**TABLET  
COURSE**

✓ **GATE Exclusive**

CS, EE, CE, ME, EC, IN

✓ **GATE + ESE**

CE, EE, ME, EC

✓ **GATE + SES-GS**

CS, EE, CE, ME, EC, IN

✓ **GATE + ESE + SES-GS**

CE, EE, ME, EC

Note : Printed study materials will be sent to your door step.



[www.madeeasyprime.com](http://www.madeeasyprime.com)



**RECORDED  
COURSE**

✓ **GATE Exclusive**

CS, EE, CE, ME, EC, IN, CH

✓ **GATE + ESE**

CE, EE, ME, EC

✓ **GATE + SES-GS**

CS, EE, CE, ME, EC, IN, CH

✓ **GATE + ESE + SES-GS**

CE, EE, ME, EC



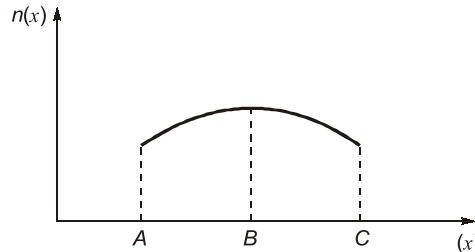
[www.madeeasyprime.com](http://www.madeeasyprime.com)

Delhi Centre : 44-A/1, Kalu Sarai, Near Hauz Khas Metro Station, New Delhi - 110016 | Ph : 9021300500

MADE EASY Centres : Delhi | Bhopal | Hyderabad | Jaipur | Kolkata | Pune

[www.madeeasy.in](http://www.madeeasy.in)

- Q.3** The free electron concentration profile  $n(x)$  in a doped semiconductor at equilibrium is shown in the figure, where the points A, B, and C mark three different positions. Which of the following statements is/are true?



- (a) For  $x$  between B and C, the electron diffusion current is directed from C to B.
- (b) For  $x$  between B and A, the electric field is directed from A to B.
- (c) For  $x$  between B and A, the electron drift current is directed from B to A.
- (d) For  $x$  between B and C, the electric field is directed from B to C.

**Ans.** (a, c, d)

**End of Solution**

- Q.4** A machine has a 32-bit architecture with 1-word long instructions. It has 24 registers and supports an instruction set of size 40. Each instruction has five distinct fields, namely opcode, two source register identifiers, one destination register identifier, and an immediate value. Assuming that the immediate operand is an unsigned integer, its maximum value is \_\_\_\_\_.

**Ans.** (2047)

Given 32-bit architecture { 1 word long instructions }

$$1 \text{ word} = 32\text{-bits}$$

$$\text{Number of registers} = 24, \text{ bits required} \Rightarrow 2^n = 24$$

$$n = \log_2(24)$$

$$\therefore n = 5\text{-bits}$$

$$\text{Number instructions} = 40$$

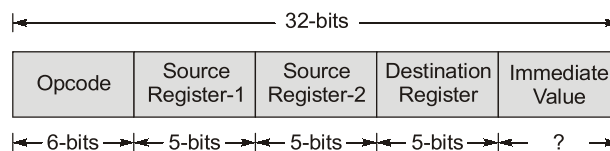
$$\therefore \text{Opcode bits would be } 2^n = 40$$

$$\therefore n = \log_2(40)$$

$$n = 6\text{-bits}$$

Each register field requires 5-bits.

Instruction format would be



$$\therefore \text{Immediate value bits} = 32 - (6 + 5 + 5 + 5) = 32 - 21 = 11\text{-bits}$$

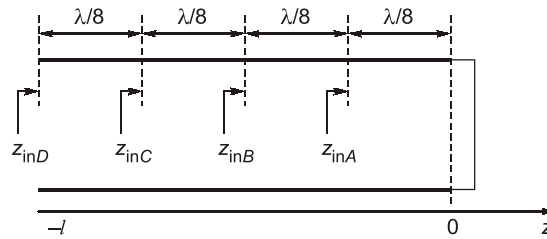
The range of unsigned values = 0 to  $2^n - 1$

$$= 0 \text{ to } 2^{11} - 1 = 0 \text{ to } (2048 - 1) = 0 \text{ to } 2047$$

$$\therefore \text{Maximum unsigned integer} = 2047$$

**End of Solution**

**Q.5** Consider a lossless transmission line terminated with a short circuit as shown in the figure below. As one moves towards the generator from the load, the normalized impedances  $Z_{inA}$ ,  $Z_{inB}$ ,  $Z_{inC}$  and  $Z_{inD}$  (indicated in the figure) are \_



- (a)  $Z_{inA} = +0.4j \Omega$ ,  $Z_{inB} = \infty$ ,  $Z_{inC} = -0.4j \Omega$ ,  $Z_{inD} = 0$
- (b)  $Z_{inA} = -1j \Omega$ ,  $Z_{inB} = 0$ ,  $Z_{inC} = +1j \Omega$ ,  $Z_{inD} = \infty$
- (c)  $Z_{inA} = \infty$ ,  $Z_{inB} = +0.4j \Omega$ ,  $Z_{inC} = 0$ ,  $Z_{inD} = +0.4j \Omega$
- (d)  $Z_{inA} = +1j \Omega$ ,  $Z_{inB} = \infty$ ,  $Z_{inC} = -1j \Omega$ ,  $Z_{inD} = 0$

**Ans. (d)**

$$Z_{s/c} = jZ_0 \tan \beta l.$$

⇒ Normalized impedance,

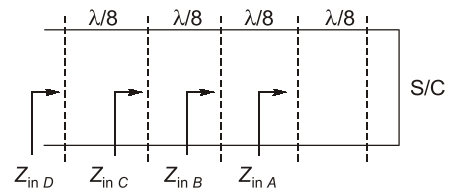
$$\bar{Z}_{S/C} = \frac{Z_{S/C}}{Z_0} = j \tan \beta l$$

$$\bar{Z}_{inA} = j \tan \left( \frac{2\pi}{\lambda} \cdot \frac{\lambda}{8} \right) = j \tan \left( \frac{\pi}{4} \right) = j1 \Omega$$

$$\bar{Z}_{inB} = j \tan \left( \frac{2\pi}{\lambda} \cdot \frac{\lambda}{4} \right) = \infty$$

$$\bar{Z}_{inC} = j \tan \left( \frac{2\pi}{\lambda} \cdot \frac{3\lambda}{8} \right) = -j1 \Omega$$

$$\bar{Z}_{inD} = j \tan \left( \frac{2\pi}{\lambda} \cdot \frac{\lambda}{2} \right) = 0$$



End of Solution

**Q.6** A causal and stable LTI system with impulse response  $h(t)$  produces an output  $y(t)$  for an input signal  $x(t)$ . A signal  $x(0.5t)$  is applied to another causal and stable LTI system with impulse response  $h(0.5t)$ . The resulting output is \_\_\_\_\_.

- (a)  $2y(0.5t)$
- (b)  $4y(0.5t)$
- (c)  $0.25y(2t)$
- (d)  $0.25y(0.25t)$

**Ans. (a)**

$$y(t) = x(t) * h(t)$$

$$x(t) \leftrightarrow X(\omega)$$

$$x(0.5t) \leftrightarrow 2X(2\omega)$$

$$h(0.5t) \leftrightarrow 2H(2\omega)$$

$$y(t) \leftrightarrow Y(\omega)$$

$$Y(\omega) \leftrightarrow X(\omega) \times H(\omega)$$

After scaling,  $Y_1(\omega) = 2X(2\omega) \times 2H(2\omega)$





# Rank Improvement Course for **GATE 2025**

**LIVE-ONLINE  
COURSE**

**Streams :**  
CS, CE, EE, ME, EC

Commencing from  
**3 JUNE, 2024**

**Teaching Hours :**  
300 to 350 hours

**Course Validity :**  
Till GATE 2025 Exam

- ✓ Comprehensive problem-solving sessions by India's top faculties.
- ✓ Focus on improving accuracy & speed.
- ✓ Newly develop workbooks (e-copy) in line with recent trends in GATE.

Download  
the App



Android



iOS

 **9021300500**

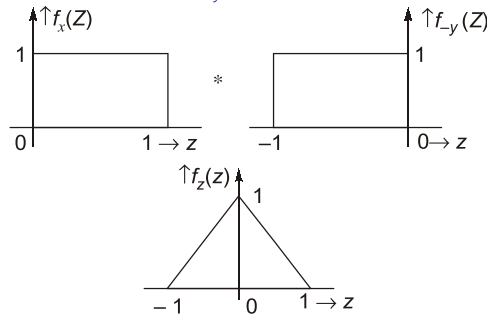
 **www.madeeasyprime.com**





$$P(Z \geq 0) = \int_0^{\infty} f_z(Z) dz$$

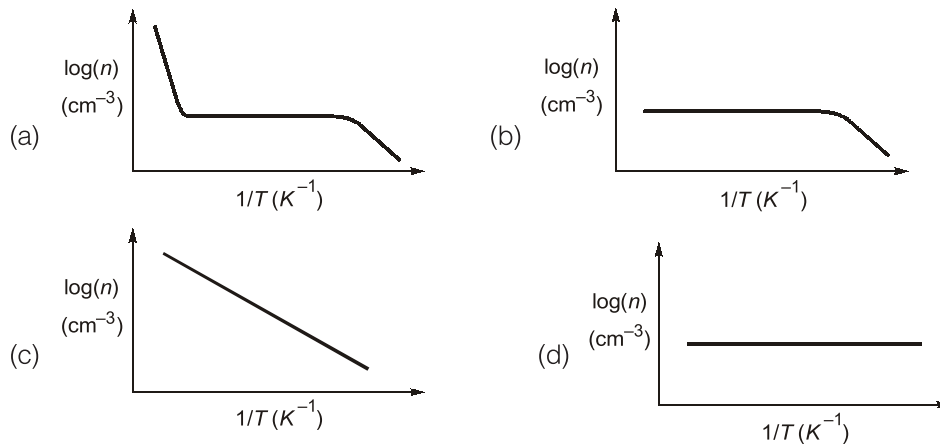
$$f_z(z) = f_x(z) * f_y(z)$$



$$P(Z \geq 0) = \frac{1}{2}$$

End of Solution

**Q.11** For non-degenerately doped n-type silicon, which one of the following plots represents the temperature ( $T$ ) dependence of free electron concentration ( $n$ )?



**Ans. (a)**

End of Solution

**Q.12** In a number system of base  $r$ , the equation  $x^2 - 12x + 37 = 0$  has  $x = 8$  as one of its solutions. The value of  $r$  is \_\_\_\_\_.

**Ans. (11)**

End of Solution

**Q.13** An amplitude modulator has output (in Volts)

$$s(t) = A\cos(400\pi t) + B\cos(360\pi t) + B\cos(440\pi t)$$

The carrier power normalized to  $1 \Omega$  resistance is 50 Watts. The ratio of the total sideband power to the total power is  $1/9$ . The value of  $B$  (in Volts, rounded off to two decimal places) is \_\_\_\_\_.

Ans. (2.5)

$$P_C = \frac{A^2}{2} = 50$$

$$A = 10$$

$$\frac{P_{SB}}{P_t} = \frac{\mu^2}{2 + \mu^2} = \frac{1}{9}$$

$$\mu = \frac{1}{2}$$

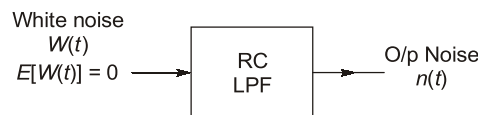
$$B = \frac{A_c \mu}{2} = \frac{10}{2} \times \frac{1}{2} = 2.5$$

End of Solution

**Q.14** A White Gaussian noise  $w(t)$  with zero mean and power spectral density  $\frac{N_0}{2}$ , when applied to a first-order  $RC$  low pass filter produces an output  $n(t)$ . At a particular time  $t = t_k$ , the variance of the random variable  $n(t_k)$  is \_\_\_\_\_.

- |                       |                       |
|-----------------------|-----------------------|
| (a) $\frac{N_0}{4RC}$ | (b) $\frac{2N_0}{RC}$ |
| (c) $\frac{N_0}{RC}$  | (d) $\frac{N_0}{2RC}$ |

Ans. (a)



$$E[n(t)] = E[W(t)] \cdot H(0)$$

$$E[n(t)] = 0$$

$$E[n^2(t)] = \{E(n(t))^2 + \text{var}[n(t)]\}$$

$$\text{var}[n(t)] = E[n^2(t)]$$

at  $t = t_k$

$$\text{var}[n(t)]|_{t=t_k} = E[n^2(t_k)] = E[n(t_k) \cdot n(t_k)] = R_n(0)$$

$$S_n(f) = S_W(f) \cdot |H(f)|^2$$

$$= \frac{N_0}{2} \cdot \frac{1}{1 + (\omega RC)^2}$$

$$R_n(\tau) = \text{IFT}[S_n(f)] = \frac{N_0}{4RC} \cdot e^{-\frac{|\tau|}{RC}}$$

$$R_n(0) = \frac{N_0}{4RC}$$

End of Solution





# Conventional Questions Practice Programme for ESE & State Exams

Commencing from  
**4<sup>th</sup> March, 2024**

**OFFLINE  
& ONLINE  
COURSE**  
Streams :  
CE, EE, ME, EC

**Teaching Hours :**  
300 to 350 hours

**Course Duration :**  
100 days

**Special offer valid till 4<sup>th</sup> March, 2024**

### Offline Course

Fee : ~~₹18,000 + GST~~ ₹16,000 + GST

Ex. MADE EASY : ~~₹15,000 + GST~~ ₹13,000 + GST

### Live-Online Course

Fee : ~~₹14,000 + GST~~ ₹12,000 + GST

- ✓ In-depth discussion on conventional questions.
- ✓ Helps to improve answer writing and presentation skills.
- ✓ Mains workbooks and Mains Test Series will be provided in this course.

**Note :** Offline classes will be conducted at Delhi Centre.

**Delhi Centre :** 44-A/1, Kalu Sarai, Near Hauz Khas Metro Station, New Delhi - 110016 | **Ph :** 9021300500

**MADE EASY Centres :** Delhi | Bhopal | Hyderabad | Jaipur | Kolkata | Pune

[www.madeeasy.in](http://www.madeeasy.in)

(a)  $\sum_{m=-\infty}^{\infty} X\left(f + \frac{m}{T}\right) = T$

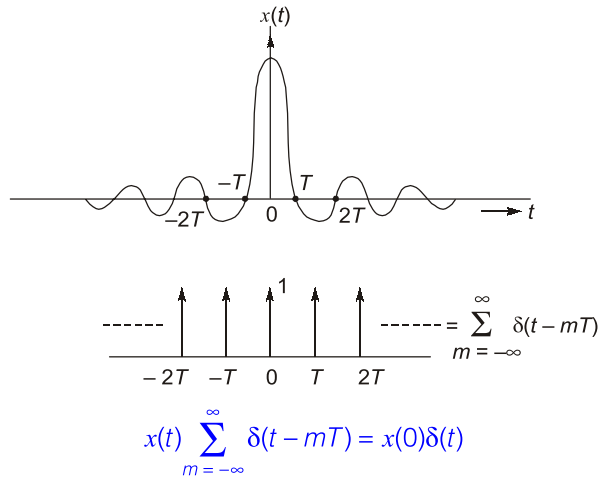
(b)  $\sum_{m=-\infty}^{\infty} X\left(f + \frac{m}{T}\right) = \frac{1}{T}$

(c)  $\sum_{m=-\infty}^{\infty} X(f + mT) = T$

(d)  $\sum_{m=-\infty}^{\infty} X(f + mT) = \frac{1}{T}$

**Ans. (a)**

For zero ISI,  $x(t)$  should have zero crossings at  $\pm T, \pm 2T, \pm 3T, \dots$



$$\frac{1}{T} \sum_{m=-\infty}^{\infty} X\left(f - \frac{m}{T}\right) = x(0)$$

$$\sum_{m=-\infty}^{\infty} X\left(f - \frac{m}{T}\right) = x(0)T$$

(or)  $\sum_{m=-\infty}^{\infty} X\left(f + \frac{m}{T}\right) = x(0)T$

**End of Solution**

**Q.17** For a causal discrete-time LTI system with transfer function

$$H(z) = \frac{2z^2 + 3}{\left(z + \frac{1}{3}\right)\left(z - \frac{1}{3}\right)}$$

which of the following statements is/are true?

- (a) The system is stable.
- (b) The final value of the impulse response is 0.
- (c) The system is a minimum phase system.
- (d) The initial value of the impulse response is 2.

**Ans. (a, b, d)**

Given:  $H(z) = \frac{2z^2 + 3}{\left(z + \frac{1}{3}\right)\left(z - \frac{1}{3}\right)}$



System is non-minimum phase system. Since zero are lying outside the unit circle.

Final value: 
$$h(\infty) = \lim_{z \rightarrow 1} (z-1) \frac{2z^2 + 3}{\left(z + \frac{1}{3}\right)\left(z - \frac{1}{3}\right)} = 0$$

Initial value: 
$$h(0) = \lim_{z \rightarrow \infty} \frac{(2z^2 + 3)}{\left(z + \frac{1}{3}\right)\left(z - \frac{1}{3}\right)} = \lim_{z \rightarrow \infty} \frac{z^2 \left[2 + \frac{3}{z^2}\right]}{z^2 \left[1 + \frac{1}{3z}\right] \left[1 - \frac{1}{3z}\right]}$$

$$= \lim_{z \rightarrow \infty} \frac{\left[2 + \frac{3}{z^2}\right]}{\left[1 + \frac{1}{3z}\right] \left[1 - \frac{1}{3z}\right]} = \frac{2}{1 \times 1} = 2$$

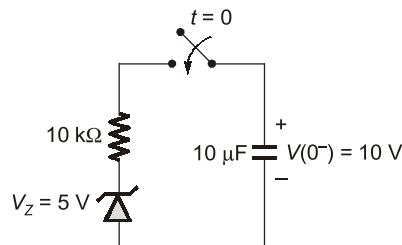
$$z = -\frac{1}{3}, z = \frac{1}{3}$$

$$|z| = \frac{1}{3} = 0.33$$

System is stable. Since  $|\text{pole}| < 1$  i.e. pole are lying inside the unit circle.

End of Solution

- Q.18** As shown in the circuit, the initial voltage across the capacitor is 10 V, with the switch being open. The switch is then closed at  $t = 0$ . The total energy dissipated in the ideal Zener diode ( $V_z = 5$  V) after the switch is closed (in mJ, rounded off to three decimal places) is \_\_\_\_\_.



**Ans.** (0.125)

For  $t > 0$ : Capacitor starts discharging through 10 K resistor and zener diode.

$$V_c(t) = 10e^{-t/RC}, R \times C = 0.1 \text{ sec}$$

Zener diode remains on till  $V_c$  becomes 5 V.

$$5 = 10e^{-t_1/RC} \Rightarrow t_1 = RC \ln 2 = 0.0693 \text{ sec}$$

Current in the circuit is  $i(t) = I_0 e^{-t/RC}$

where 
$$I_0 = \frac{10-5}{10\text{k}} = 0.5 \text{ mA}$$

Total energy dissipated in zener diode is,

$$W = \int_0^{t_1} V_z \times i(t) dt$$

$$\begin{aligned}
 W &= \int_0^{0.0693} 5 \times 0.5 e^{-t/RC} \text{ mJ} \\
 &= 2.5[-0.1] \left[ e^{-t/0.1} \right]_0^{0.0693} \\
 W &= 0.125 \text{ mJ}
 \end{aligned}$$

**End of Solution**

**Q.19** Let  $\hat{i}$  and  $\hat{j}$  be the unit vectors along  $x$  and  $y$  axes, respectively and let  $A$  be a positive constant. Which one of the following statements is true for the vector fields  $\vec{F}_1 = A(\hat{i}y + \hat{j}x)$  and  $\vec{F}_2 = A(\hat{i}y - \hat{j}x)$ ?

- (a) Neither  $\vec{F}_1$  nor  $\vec{F}_2$  is an electrostatic field.
- (b) Only  $\vec{F}_2$  is an electrostatic field
- (c) Only  $\vec{F}_1$  is an electrostatic field.
- (d) Both  $\vec{F}_1$  and  $\vec{F}_2$  are electrostatic fields.

**Ans. (c)**

For an electrostatic field,  $\nabla \times \vec{F} = 0$

$$\vec{F}_1 = A[y\hat{i} + x\hat{j}]$$

$$\begin{aligned}
 \Rightarrow \nabla \times \vec{F}_1 &= A \begin{vmatrix} \hat{i} & \hat{j} & \hat{k} \\ \frac{\partial}{\partial x} & \frac{\partial}{\partial y} & \frac{\partial}{\partial z} \\ y & x & 0 \end{vmatrix} \\
 &= A[0\hat{i} - 0\hat{j} + (1-1)\hat{k}] \\
 &= 0
 \end{aligned}$$

$$\vec{F}_2 = A[y\hat{i} - x\hat{j}]$$

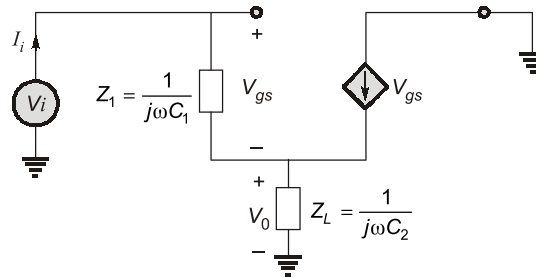
$$\begin{aligned}
 \Rightarrow \nabla \times \vec{F}_2 &= A \begin{vmatrix} \hat{i} & \hat{j} & \hat{k} \\ \frac{\partial}{\partial x} & \frac{\partial}{\partial y} & \frac{\partial}{\partial z} \\ y & -x & 0 \end{vmatrix} \\
 &= A[0\hat{i} - 0\hat{j} + (-1-1)\hat{k}] \\
 &= -2A\hat{k}
 \end{aligned}$$

Hence,  $\vec{F}_1$  is electrostatic,  $\vec{F}_2$  is not electrostatic.

**End of Solution**



Ans. (a)



$$I_i = \frac{V_i - V_0}{z_i} = \frac{V_i}{z_i} - \frac{V_0}{z_i} \quad \dots(i)$$

$$V_0 = (I_i + g_m V_{gs}) z_L$$

$$V_0 = I_i z_L + g_m V_{gs} z_L$$

$$V_0 = I_i (z_L + g_m z_1 z_L)$$

$$I_i = \frac{V_i}{z_1} - \frac{I_i (z_L + g_m z_1 z_L)}{z_1}$$

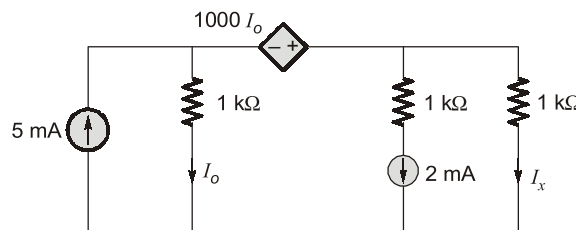
$$I_i \frac{[z_1 + z_L + g_m z_1 z_L]}{z_1} = \frac{V_i}{z_1}$$

$$\frac{V_i}{I_i} = z_1 + z_L + g_m z_1 z_L$$

$$z_{in} = \frac{1}{j\omega C_1} + \frac{1}{j\omega C_2} - \frac{g_m}{\omega^2 C_1 C_2}$$

End of Solution

Q.23 In the given circuit, the current  $I_x$  (in mA) is \_\_\_\_.



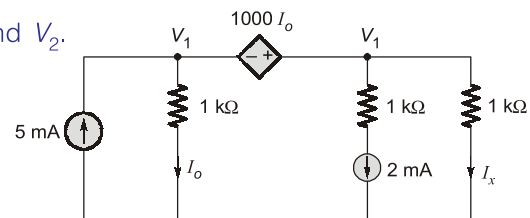
Ans. (2)

$V_1$  and  $V_2$  are super node. KCL at  $V_1$  and  $V_2$ .

$$\frac{V_1}{10^3} + \frac{V_2}{1 \times 10^3} + 2 \times 10^{-3} = 5 \times 10^{-3} \quad \dots(i)$$

$$I_0 = \frac{V_1}{10^3}$$

$$V_2 - V_1 = 10^3 I_0 = 10^3 \times \frac{V_1}{10^3} = V_1$$



$$V_2 = 2V_1$$

$$V_1 = \frac{V_2}{2} \quad \dots(ii)$$

Put in equation (i)

$$\frac{1}{2}V_2 + V_2 = 3$$

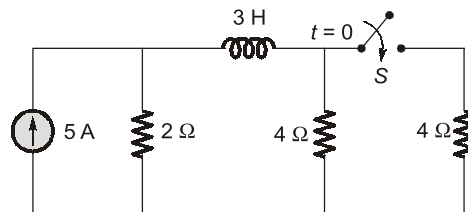
$$V_2 = 2 \text{ V}$$

$$I_x = \frac{V_2}{10^3} = 2 \text{ mA}$$

$$I_x = 2 \text{ mA}$$

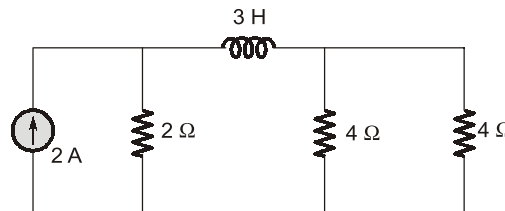
**End of Solution**

- Q.24** In the circuit given below, the switch S was kept open for a sufficiently long time and is closed at time  $t = 0$ . The time constant (in seconds) of the circuit for  $t > 0$  is \_\_\_\_\_.

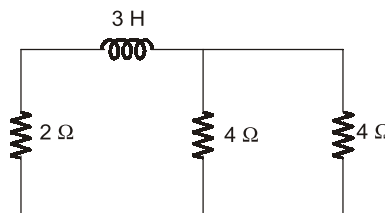


**Ans. (0.75)**

After the switch closed



For time constant, current source is open circuit.



$$\therefore \tau = \frac{L_{eq}}{R_{eq}} = \frac{3}{2+2} = \frac{3}{4} = 0.75 \text{ sec}$$

**End of Solution**

- Q.25** A source transmits symbols from an alphabet of size 16. The value of maximum achievable entropy (in bits) is \_\_\_\_\_.

**Ans. (4)**

$$H_{\max} = \log_2 16 = 4$$

**End of Solution**



**SSC-JE**

**RRB-JE**

**State-JE/AE**

# FOUNDATION COURSES TECHNICAL & NON-TECHNICAL

**Streams : CE, ME, EE | MODE : ONLINE**

- ✓ Classes by experienced and renowned faculties.
- ✓ Well-researched study material.
- ✓ Interaction facility for doubt removal.

**RECORDED CLASSES**

**Admissions open**



[www.madeeasyprime.com](http://www.madeeasyprime.com)

Download **MADE EASY PRIME** app



Android



iOS

**Low Cost EMI Facility Available**

**9021300500**

**www.madeeasyprime.com**



**Q.27** The information bit sequence (1 1 1 0 1 0 1 0 1) is to be transmitted by encoding with Cyclic Redundancy Check 4 (CRC-4) code, for which the generator polynomial is  $C(x) = x^4 + x + 1$ . The encoded sequence of bits is \_\_\_\_\_.

- (a) {1 1 1 0 1 0 1 0 1 1 1 0 1}      (b) {1 1 1 0 1 0 1 0 1 1 1 1 0}
- (c) {1 1 1 0 1 0 1 0 1 0 1 0 0}      (d) {1 1 1 0 1 0 1 0 1 1 1 0 0}

**Ans. (d)**

Given information bit sequence  $\rightarrow d = 111010101$

Generator polynomial  $\rightarrow C(x) = x^4 + x + 1$

$$C = 10011$$

Generator polynomial having 5 bits, so append  $5 - 1 = 4$  bits to information sequence.

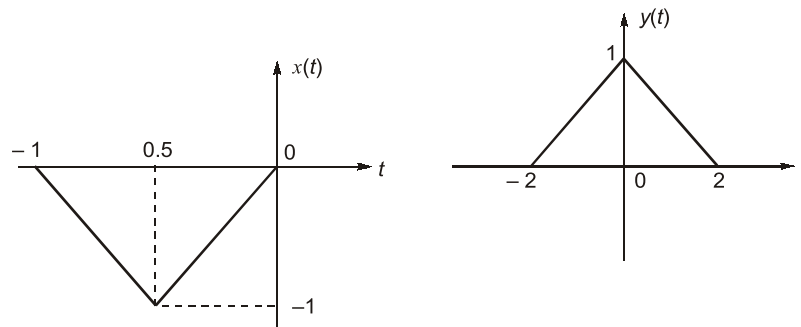
$$d = 1\ 1\ 1\ 0\ 1\ 0\ 1\ 0\ 1\ 0\ 0\ 0\ 0$$

$$\begin{array}{r}
 10011 \overline{)1110101010000} \quad (11 \\
 \underline{10011} \\
 \emptyset 111001010000 \\
 \underline{10011} \\
 \emptyset 11111010000 \\
 \underline{10011} \\
 \emptyset 1100010000 \\
 \underline{10011} \\
 \emptyset 101110000 \\
 \underline{10011} \\
 \emptyset \emptyset 1000000 \\
 \underline{10011} \\
 \emptyset \emptyset \emptyset 1100
 \end{array}$$

$$\text{Encoded sequence} = 1\ 1\ 1\ 0\ 1\ 0\ 1\ 0\ 1\ 1\ 1\ 0\ 0$$

End of Solution

**Q.28** Consider two continuous time signals  $x(t)$  and  $y(t)$  as shown below

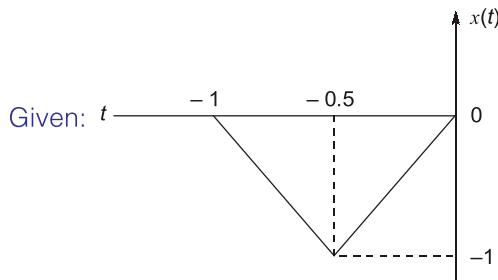


If  $X(f)$  denotes the Fourier transform of  $x(t)$ , then the Fourier transform of  $y(t)$  is \_\_\_\_\_.

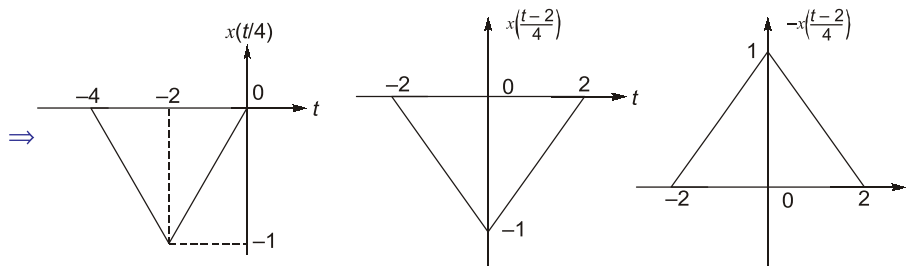
- (a)  $-\frac{1}{4}X(f/4)e^{-j\pi f}$       (b)  $-4X(4f)e^{-j\pi f}$
- (c)  $-4X(4f)e^{-j4\pi f}$       (d)  $-\frac{1}{4}X(f/4)e^{-j4\pi f}$



Ans. (c)



Length of  $x(t)$  is 1 and length of  $y(t)$  is 4.



$$\therefore y(t) = -x\left(\frac{t-2}{4}\right)$$

$$y(t) = -x\left(\frac{t-2}{4}\right) = -x\left(\frac{t}{4} - \frac{1}{2}\right)$$

On taking Fourier transform, we get

$$x(t) \leftrightarrow X(f)$$

$$x\left(\frac{t}{4} - \frac{1}{2}\right) \leftrightarrow 4X(4f)e^{-j4\pi f}$$

$$-x\left(\frac{t}{4} - \frac{1}{2}\right) \leftrightarrow -4X(4f)e^{-j4\pi f}$$

End of Solution

**Q.29** Consider a system  $S$  represented in state space as

$$\frac{dx}{dt} = \begin{bmatrix} 0 & -2 \\ 1 & -3 \end{bmatrix} x + \begin{bmatrix} 1 \\ 0 \end{bmatrix} r, y = [2 \quad -5]x$$

Which of the state space representations given below has/have the same transfer function as that of  $S$ ?

(a)  $\frac{dx}{dt} = \begin{bmatrix} 0 & 1 \\ -2 & -3 \end{bmatrix} x + \begin{bmatrix} 1 \\ 0 \end{bmatrix} r, y = [0 \quad 2]x$  (b)  $\frac{dx}{dt} = \begin{bmatrix} 0 & 1 \\ -2 & -3 \end{bmatrix} x + \begin{bmatrix} 1 \\ 0 \end{bmatrix} r, y = [1 \quad 2]x$

(c)  $\frac{dx}{dt} = \begin{bmatrix} -1 & 0 \\ 0 & -2 \end{bmatrix} x + \begin{bmatrix} -1 \\ 3 \end{bmatrix} r, y = [1 \quad 1]x$  (d)  $\frac{dx}{dt} = \begin{bmatrix} -1 & 0 \\ 0 & -2 \end{bmatrix} x + \begin{bmatrix} 1 \\ 1 \end{bmatrix} r, y = [1 \quad 2]x$

Ans. (b, c)

From given state model, (observable form)

$$TF = C[(sI - A)^{-1}B] + D \quad \dots(B)$$

$$= \frac{(2s+1)}{s^2+3s+2}$$

From this controllable form can be written as

$$X^0 = \begin{bmatrix} 0 & 1 \\ -2 & -3 \end{bmatrix} X + \begin{bmatrix} 0 \\ 1 \end{bmatrix} u$$

$$Y = [1 \ 2] X + [0]u$$

Another possibility,  $TF = \frac{2s+1}{s^2+3s+2} = \frac{-1}{s+1} + \frac{3}{s+2}$

$$X^0 = \begin{bmatrix} -1 & 0 \\ 0 & -2 \end{bmatrix} X + \begin{bmatrix} -1 \\ 3 \end{bmatrix} v$$

$$Y = [1 \ 1]X + [0]u$$

Diagonal form of state mode.

End of Solution

**Q.30** A full scale sinusoidal signal is applied to a 10-bit ADC. The fundamental signal component in the ADC output has a normalized power of 1 W, and the total noise and distortion normalized power is 10  $\mu$ W. The effective number of bits (rounded off to the nearest integer) of the ADC is \_\_\_\_\_.

- |        |       |
|--------|-------|
| (a) 10 | (b) 9 |
| (c) 8  | (d) 7 |

**Ans. (c)**

$$\frac{S}{N_q} = \frac{1}{10 \times 10^{-6}}$$

$$\frac{S}{N_q} = 10^5$$

$$\left( \frac{S}{N_q} \right)_{dB} = 10 \log_{10} 10^5$$

$$= 50 \text{ dB}$$

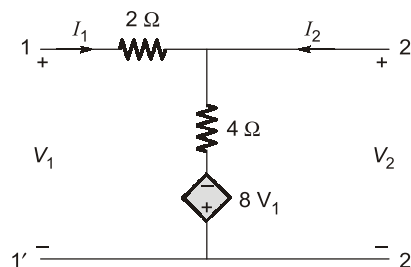
$$1.76 + 6.02n = 50$$

$$n = 8.01$$

rounded off to nearest integer  $\rightarrow n \simeq 8$

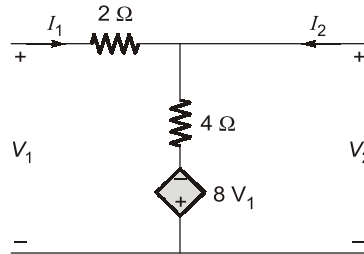
End of Solution

**Q.31** For the two port network shown below, the value of the  $Y_{21}$  parameter (in Siemens) is \_\_\_\_\_.

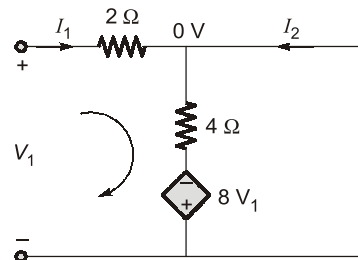


Ans. (1.5)

Given two-port network,



$$Y_{21} = \left. \frac{I_2}{V_1} \right|_{V_2=0}$$



by applying KVL in the loop,

$$V_1 - 2I_1 - 4(I_1 + I_2) + 8V_1 = 0$$

$$9V_1 - 6I_1 - 4I_2 = 0$$

but

$$I_1 = \frac{V_1 - 0}{2} \Rightarrow \frac{V_1}{2} = I_1$$

$$\therefore 9V_1 - 6\left(\frac{V_1}{2}\right) - 4I_2 = 0$$

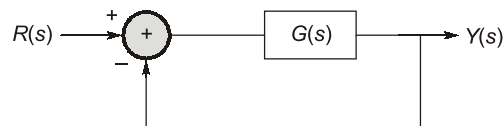
$$6V_1 = 4I_2$$

$$\therefore \frac{I_2}{V_1} = \frac{6}{4} = \frac{3}{2} = 1.5 \text{ S}$$

End of Solution

**Q.32** Consider a unity negative feedback control system with forward path gain

$$G(s) = \frac{K}{(s+1)(s+2)(s+3)} \text{ as shown.}$$



The impulse response of the closed-loop system decays faster than  $e^{-t}$  if \_\_\_\_\_.

(a)  $-4 \leq K \leq -1$

(b)  $1 \leq K \leq 5$

(c)  $7 \leq K \leq 21$

(d)  $-24 \leq K \leq -6$

Ans. (b)

Given, 
$$G(s) = \frac{K}{(s+1)(s+2)(s+3)}$$

Impulse response of system is

$$Y(s) = \frac{K}{(s+1)(s+2)(s+3)+K}$$

Given: At impulse response of closed loop system decay faster than  $e^{-t}$

Hence, put  $s = s - 1$ ,

∴ The new characteristic equation is,

$$(s - 1 + 1)(s - 1 + 2)(s - 1 + 3) + K = 0$$

$$s(s + 1)(s + 2) + K = 0$$

$$s^3 + 3s^2 + 2s + K = 0$$

By RH criterion,

$s^3$	1	2
$s^2$	3	K
$s^1$	$\frac{6-K}{3}$	
$s^0$	K	

$$\therefore K > 0 ; \quad \frac{6-K}{3} > 0 \Rightarrow K < 6$$

$$\therefore 0 < K < 6$$

Hence, option (b) satisfies above range of K.

End of Solution

**Q.33** Consider the Earth to be a perfect sphere of radius  $R$ . Then the surface area of the region, enclosed by the  $60^\circ\text{N}$  latitude circle, that contains the north pole in its interior is \_\_\_\_\_.

- |                                                                                                               |                                                                                                    |
|---------------------------------------------------------------------------------------------------------------|----------------------------------------------------------------------------------------------------|
| <p>(a) <math>(2 - \sqrt{3})\pi R^2</math></p> <p>(c) <math>\frac{(2 + \sqrt{3})\pi R^2}{8\sqrt{2}}</math></p> | <p>(b) <math>\frac{(\sqrt{2} - 1)\pi R^2}{2}</math></p> <p>(d) <math>\frac{2\pi R^2}{3}</math></p> |
|---------------------------------------------------------------------------------------------------------------|----------------------------------------------------------------------------------------------------|

Ans. (a)

From the figure

Earth's North pole =  $90^\circ$

Earth's equator =  $0^\circ$

In spherical co-ordinate system

Earth's North pole,  $\theta = 0^\circ$

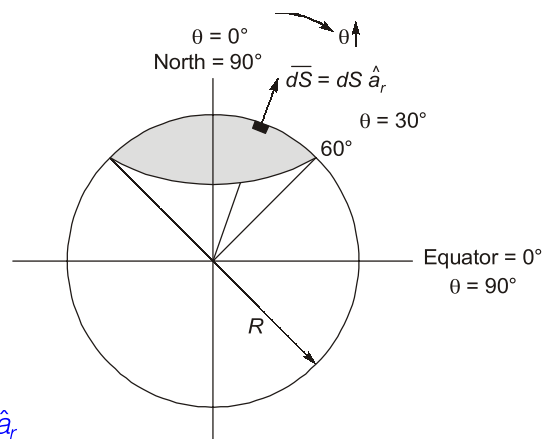
Earth's equator,  $\theta = 90^\circ$

The area of the shaded portion,

$$\overline{dS} = dS \hat{a}_r$$

Hence, in spherical coordinate system

$$\Rightarrow \overline{dS} = r^2 \sin\theta d\theta d\phi \hat{a}_r$$





# POSTAL BOOK PACKAGES

## PACKAGES

- ESE
- PSU's
- SSC-JE
- STATE SERVICES EXAMS
- GATE
- CSE
- RRB-JE

### Streams :

CE, CS, EE, ME, EC, IN, PI, CH



For online purchase, visit :

[www.madeeasypublications.org](http://www.madeeasypublications.org)

$$\begin{aligned}
 \Rightarrow S &= \int dS = \int r^2 \sin\theta d\theta d\phi \\
 &= r^2 \int_{\theta=0^\circ}^{30^\circ} \sin\theta d\theta \int_{\phi=0}^{2\pi} d\phi \quad \text{at } r = R \\
 &= R^2 \left[ -\cos\theta \Big|_0^{30^\circ} \right] \cdot \phi \Big|_0^{2\pi} \\
 &= R^2 \{ -[\cos 30^\circ - \cos 0^\circ] \} \cdot 2\pi \\
 &= R^2 \left\{ -\left[ \frac{\sqrt{3}}{2} - 1 \right] \right\} \cdot 2\pi = R^2 \cdot \frac{2 - \sqrt{3}}{2} \cdot 2\pi \\
 &= (2 - \sqrt{3})\pi R^2
 \end{aligned}$$

End of Solution

**Q.34** The photocurrent of a PN junction diode solar cell is 1 mA. The voltage corresponding to its maximum power point is 0.3 V. If the thermal voltage is 30 mV, the reverse saturation current of the diode (in nA, rounded off to two decimal places) is \_\_\_\_\_.

**Ans. (4.13)**

**Note:** In this question voltage corresponds to max. power,  $V_m$  is given

i.e.,  $V_m = 0.3$  Volt

( $V_{OC}$  is not given be careful)

$$\begin{aligned}
 I_0 &= \frac{I_L}{\left(1 + \frac{V_m}{V_T}\right) e^{V_m/V_T} - 1} = \frac{1 \text{ mA}}{\left(1 + \frac{0.3}{0.03}\right) e^{0.3/0.03} - 1} \\
 &= 4.127 \text{ nA} \approx 4.13 \text{ nA}
 \end{aligned}$$

End of Solution

**Q.35** A continuous time signal  $x(t) = 2 \cos(8\pi t + \pi/3)$  is sampled at a rate of 15 Hz. The sampled signal  $x_s(t)$  when passed through an LTI system with impulse response

$$h(t) = \left( \frac{\sin 2\pi t}{\pi t} \right) \cos(38\pi t - \pi/2)$$

produces an output  $x_o(t)$ . The expression for  $x_o(t)$  is \_\_\_\_\_.

- |                                |                                |
|--------------------------------|--------------------------------|
| (a) $15 \sin(38\pi t + \pi/3)$ | (b) $15 \cos(38\pi t - \pi/6)$ |
| (c) $15 \sin(38\pi t + \pi/6)$ | (d) $15 \sin(38\pi t - \pi/3)$ |

**Ans. (b)**

$$x(t) = 2 \cos\left(8\pi t + \frac{\pi}{3}\right), \quad \omega_o = 8\pi$$

$$f_s = 15 \text{ Hz}$$

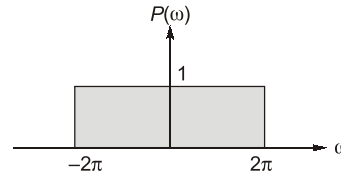
$$x(t) \xrightarrow{\text{sample}} x_s(t) \xrightarrow{h(t)} x_o(t)$$

$$\Rightarrow h(t) = \frac{\sin 2\pi t}{\pi t} \cos\left(38\pi t - \frac{\pi}{2}\right)$$

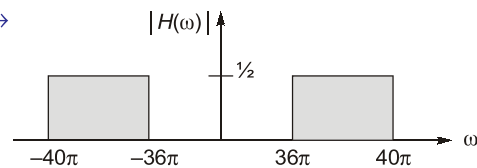
Let  $p(t) = \frac{\sin 2\pi t}{\pi t}$

$$h(t) = p(t) \cos\left(38\pi t - \frac{\pi}{2}\right)$$

$$p(t) = \frac{\sin 2\pi t}{\pi t} \leftrightarrow$$



$$h(t) = p(t) \cos\left(38\pi t - \frac{\pi}{2}\right) \leftrightarrow$$



After sampling:  $X_s(\omega) = f_s \sum_{n=-\infty}^{\infty} X(\omega - n\omega_s)$

Frequency components present in sampler output  $n\omega_s \pm \omega_o$

$\omega_o, \omega_s \pm \omega_o, 2\omega_s \pm \omega_o, \dots$

$8\pi, 30\pi \pm 8\pi, 60\pi \pm 8\pi, \dots$

$8\pi, 22\pi, 38\pi, 52\pi, 68\pi, \dots$  (rad/sec)

System will pass '38π' component of input.

$$x_o(t) = 2 \times \frac{f_s}{2} \cos\left[38\pi t + \frac{\pi}{3} - \frac{\pi}{2}\right] = 15 \cos\left(38\pi t - \frac{\pi}{6}\right)$$

End of Solution

**Q.36** A 4-bit priority encoder has inputs  $D_3, D_2, D_1$  and  $D_0$  in descending order of priority. The two-bit output  $AB$  is generated as 00, 01, 10, and 11 corresponding to inputs  $D_3, D_2, D_1$  and  $D_0$ , respectively. The Boolean expression of the output bit  $B$  is \_\_\_\_\_.

(a)  $\overline{D_3}D_2 + \overline{D_3}\overline{D_1}$

(b)  $\overline{D_3}\overline{D_2}$

(c)  $\overline{D_3}\overline{D_1}$

(d)  $D_3\overline{D_2} + \overline{D_3}D_1$

**Ans. (\*)**

Given 4-bit priority encoder has inputs  $D_3, D_2, D_1$  and  $D_0$  in descending order of priority.

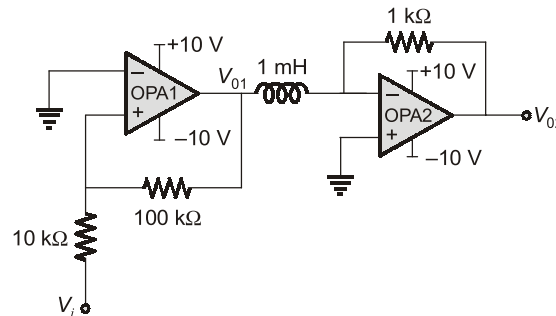
$D_3$	$D_2$	$D_1$	$D_0$	$A$	$B$
0	0	0	1	0	0
0	0	1	X	0	1
0	1	X	X	1	0
1	X	X	X	1	1

The Boolean expression of the output bit  $B = \overline{D_3}\overline{D_2}D_1 + D_3$

Therefore,  $B = D_3 + \overline{D_2}D_1$

End of Solution

**Q.37** The opamps in the circuit shown are ideal, but have saturation voltages of  $\pm 10$  V.



Assume that the initial inductor current is 0 A. The input voltage ( $V_i$ ) is a triangular signal with peak voltages of  $\pm 2$  V and time period of  $8 \mu\text{s}$ . Which one of the following statements is true?

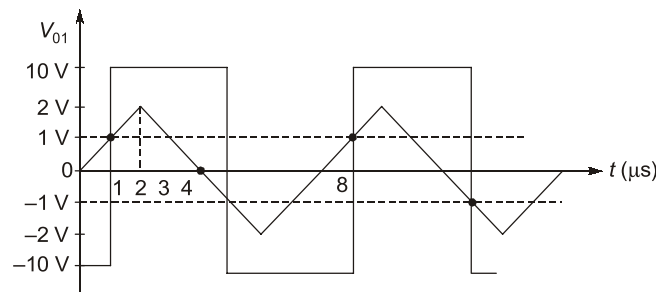
- (a)  $V_{01}$  is delayed by  $1 \mu\text{s}$  relative to  $V_i$ , and  $V_{02}$  is a trapezoidal waveform.
- (b)  $V_{01}$  is delayed by  $2 \mu\text{s}$  relative to  $V_i$ , and  $V_{02}$  is a triangular waveform.
- (c)  $V_{01}$  is not delayed relative to  $V_i$ , and  $V_{02}$  is a trapezoidal waveform.
- (d)  $V_{01}$  is not delayed relative to  $V_i$ , and  $V_{02}$  is a triangular waveform.

**Ans. (a)**

Opamp  $A_1$  is non-inverting type Schmitt Trigger.

$$V_{UT} = \frac{R_1}{R_2} \times V_{Sat} = \frac{10}{100} \times 10 \text{ V} = 1 \text{ V}$$

$$V_{LT} = -\frac{R_1}{R_2} \times V_{sat} = -\frac{10}{100} \times 10 = -1 \text{ V}$$



$V_{01}$  is square wave. It is delayed by  $1 \mu\text{s}$  wrt input  $V_i$ .

Opamp  $A_2$  is integrator.

$V_{02}$  is getting saturated in less than half time period. Hence  $V_{02}$  is a combination of ramp and constant portion. Thus  $V_{02}$  resembles trapezoidal wave.

End of Solution

**Q.38** Let  $z$  be a complex variable. If  $f(z) = \frac{\sin(\pi z)}{z^2(z-2)}$  and  $C$  is the circle in the complex plane

with  $|z| = 3$  then  $\oint_C f(z) dz$  is \_\_\_\_\_.





$$\frac{Q_{ox}}{C_{ox}} = \frac{10^{-8}}{35.4 \times 10^{-9}} = \frac{10}{35.4} \text{ volt}$$

$Q_{ox} \rightarrow$  Positive

$\therefore \frac{Q_{ox}}{C_{ox}} \rightarrow$  Negative

$$0 = \frac{-10}{35.4} + \phi_{ms}$$

$$\phi_{ms} = \frac{10}{35.4}$$

$$\phi_m - \phi_s = \frac{10}{35.4}$$

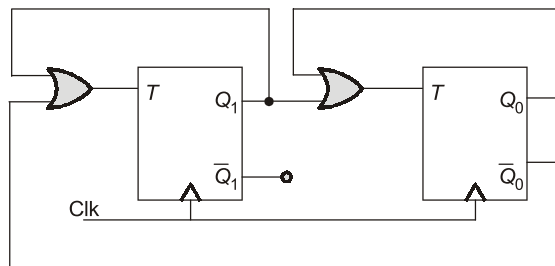
$$\phi_s = \phi_m - \frac{10}{35.4} = 4.6 - \frac{10}{35.4} = 4.317 \text{ volt}$$

$\therefore \phi_s = 4.317 \approx 4.32 \text{ eV}$

Work function energy of semiconductor.

End of Solution

**Q.40** The sequence of states ( $Q_1 Q_0$ ) of the given synchronous sequential circuit is \_\_\_\_\_.



- (a) 11  $\rightarrow$  00  $\rightarrow$  10  $\rightarrow$  01  $\rightarrow$  00      (b) 00  $\rightarrow$  01  $\rightarrow$  10  $\rightarrow$  00  
 (c) 01  $\rightarrow$  10  $\rightarrow$  11  $\rightarrow$  00  $\rightarrow$  01      (d) 00  $\rightarrow$  10  $\rightarrow$  11  $\rightarrow$  00

**Ans.** (a)

	$Q_1 + \bar{Q}_0$	$Q_1 + Q_0$	$Q_1$	$Q_0$
clk	$T_1$	$T_0$	$Q_1$	$Q_0$
			0	0
	1	0	1	0
	1	1	0	1
	0	1	0	0

00  $\rightarrow$  10  $\rightarrow$  01  $\rightarrow$  00

End of Solution

**Q.41** The radian frequency value(s) for which the discrete time sinusoidal signal  $x[n] = A \cos(\Omega n + \pi/3)$  has a period of 40 is/are \_\_\_\_\_.

- (a)  $0.15\pi$       (b)  $0.3\pi$   
 (c)  $0.45\pi$       (d)  $0.225\pi$

Ans. (a, b, c)

$$x[n] = A \cos \left[ \Omega n + \frac{\pi}{3} \right]$$

$$N = 40$$

$$\Omega = ?$$

$$\frac{\Omega}{2\pi} = \frac{m}{N}$$

$$\frac{\Omega}{2\pi} = \frac{m}{40}$$

$$\Omega = m \cdot \frac{2\pi}{40} = \pi \cdot m(0.05)$$

$$\Omega = 0.05\pi$$

$$m = 1$$

$$\Omega = 0.05\pi$$

$$m = 2$$

$$\Omega = 0.10\pi$$

$$m = 3$$

$$\Omega = 0.15\pi$$

$$m = 4$$

$$\Omega = 0.20\pi$$

$$m = 5$$

$$\Omega = 0.25\pi$$

$$m = 6$$

$$\Omega = 0.30\pi$$

$$m = 7$$

$$\Omega = 0.35\pi$$

$$m = 8$$

$$\Omega = 0.40\pi$$

$$m = 9$$

$$\Omega = 0.45\pi$$

End of Solution

**Q.42** Which of the following statements is/are true for a BJT with respect to its DC current gain  $\beta$ ?

- (a) Under high-level injection condition in forward active mode,  $\beta$  will decrease with increase in the magnitude of collector current.
- (b)  $\beta$  will be lower when the BJT is in saturation region compared to when it is in active region.
- (c) Under low-level injection condition in forward active mode, where the current at the emitter-base junction is dominated by recombination-generation process,  $\beta$  will decrease with increase in the magnitude of collector current.
- (d) A higher value of  $\beta$  will lead to a lower value of the collector-to-emitter breakdown voltage.

Ans. (a, b, d)

End of Solution

**Q.43** An NMOS transistor operating in the linear region has  $I_{DS}$  of 5  $\mu\text{A}$  at  $V_{DS}$  of 0.1 V. Keeping  $V_{GS}$  constant, the  $V_{DS}$  is increased to 1.5 V.

Given that  $\mu_n C_{ox} \frac{W}{L} = 50 \mu\text{A/V}^2$ , the transconductance at the new operating point (in  $\mu\text{A/V}$ , rounded off to two decimal places) is \_\_\_\_\_.

**MADE EASY Group**

L A U N C H E S

**MENIIT**

**NEET**

**IIT-JEE**

**MENIIT** is a new addition to the MADE EASY Group, which provides coaching for the prestigious NEET and IIT-JEE. As a part of the esteemed MADE EASY Group, MENIIT upholds the same values of academic excellence, integrity and student centricity.

**Inaugural Offer**

**50% DISCOUNT**

**on tuition fee to first 100 students**

**Admissions Open**

Corporate Office : 44-A/1, Kalu Sarai,  
Near Hauz Khas Metro Station  
New Delhi - 110016

8448815580

[www.meniit.com](http://www.meniit.com)



Our Initiatives



MADE EASY SCHOOL  
CBSE K-12 School (Delhi & Gurugram)



Ans. (52.5)

For linear region of MOS,

$$I_D = \mu_n C_{ox} \left( \frac{W}{L} \right) \left[ (V_{GS} - V_T) V_{DS} - \frac{1}{2} V_{DS}^2 \right]$$

$$5 \times 10^{-6} = 50 \times 10^{-6} \left[ (V_{GS} - V_T) 0.1 - \frac{1}{2} (0.1)^2 \right]$$

$$\frac{1}{10} = (V_{GS} - V_T) 0.1 - \frac{1}{2} \times 0.1^2$$

$$0.1 + 0.5(0.1)^2 = (V_{GS} - V_T) 0.1$$

$$1 + 0.5(0.1) = (V_{GS} - V_T)$$

$$1.05 \text{ volt} = V_{GS} - V_T$$

Now:  $V_{GS} \rightarrow \text{fix}$

$$V_{DS} = 1.5$$

$$V_{DS} > V_{GS} - V_T \Rightarrow \text{MOS is in saturation}$$

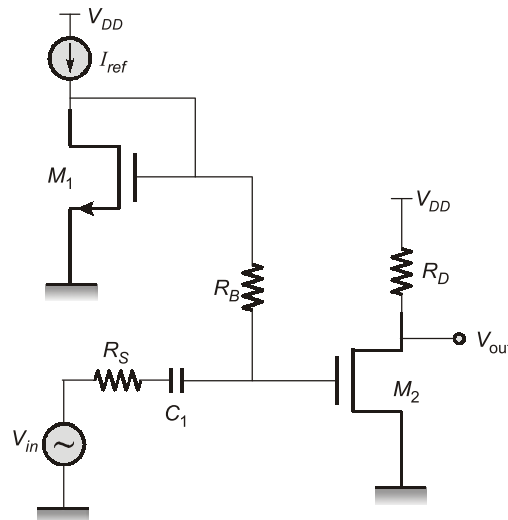
$$g_{m(\text{sat})} = \mu_n C_{ox} \left( \frac{W}{L} \right) (V_{GS} - V_T)$$

$$= 50 \times 10^{-6} \times 1.05$$

$$= 52.5 \times 10^{-6} \text{ A/V} = 52.5 \mu\text{A/V}$$

**End of Solution**

**Q.44** In the circuit shown below, the transistors  $M_1$  and  $M_2$  are biased in saturation. Their small signal transconductances are  $g_{m1}$  and  $g_{m2}$  respectively. Neglect body effect, channel length modulation and intrinsic device capacitances.



Assuming that capacitor  $C_1$  is a short circuit for AC analysis, the exact magnitude of

small signal voltage gain  $\left| \frac{V_{out}}{V_{in}} \right|$  is \_\_\_\_\_.

$$(a) \frac{g_{m2}R_D \left( \frac{1}{g_{m1}} \right)}{\frac{1}{g_{m1}} + R_s}$$

$$(b) g_{m2}R_D$$

$$(c) \frac{g_{m2}R_D \left( R_B + \frac{1}{g_{m1}} \right)}{R_B + \frac{1}{g_{m1}} + R_s}$$

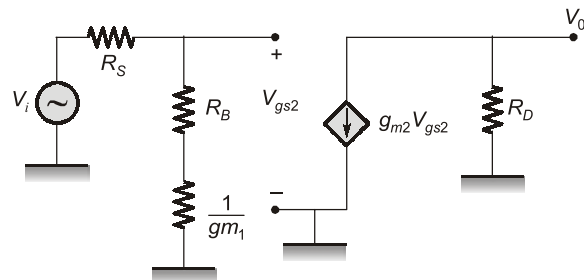
$$(d) \frac{g_{m2}R_D \left( R_B + \frac{1}{g_{m1}} + R_s \right)}{R_B + \frac{1}{g_{m1}}}$$

Ans. (c)

$$V_0 = -g_{m2}V_{gs}R_D$$

$$V_{gs} = V_i \times \frac{R_B + \frac{1}{g_{m1}}}{R_s + R_B + \frac{1}{g_{m1}}}$$

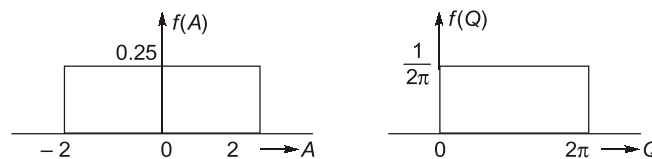
$$\left| \frac{V_0}{V_{in}} \right| = \frac{g_{m2}R_D \left( R_B + \frac{1}{g_{m1}} \right)}{R_s + R_B + \frac{1}{g_{m1}}}$$



End of Solution

**Q.45** Let  $X(t) = A \cos(2\pi f_0 t + \theta)$  be a random process, where amplitude  $A$  and phase  $\theta$  are independent of each other, and are uniformly distributed in the intervals  $[-2, 2]$  and  $[0, 2\pi]$ , respectively.  $X(t)$  is fed to an 8-bit uniform mid-rise type quantizer. Given that the autocorrelation of  $X(t)$  is  $R_x(\tau) = \frac{2}{3} \cos(2\pi f_0 \tau)$ , the signal to quantization noise ratio (in dB, rounded off to two decimal places) at the output of the quantizer is \_\_\_\_\_.

Ans. (45.15)



$$S = R_x(0) = \frac{2}{3}$$

$$N_q = \frac{\Delta^2}{12}$$

$$\Delta = \frac{2 - (-2)}{2^8} = \frac{4}{2^8}$$

$$N_q = \frac{4^2}{\frac{2^{16}}{12}} = \frac{2^4}{12 \times 2^{16}} = \frac{1}{12 \times 2^{12}}$$

$$\frac{S}{N_q} = \frac{2}{3} \times \frac{12 \times 2^{12}}{1} = 32,768$$

$$\left(\frac{S}{N_q}\right)_{dB} = 10 \log 32768 = 45.15 \text{ dB}$$

**End of Solution**

**Q.46** The relationship between any N-length sequence  $x[n]$  and its corresponding N-point discrete Fourier transform  $X[k]$  is defined as

$$X[k] = F\{x[n]\}.$$

Another sequence  $y[n]$  is formed as below

$$y[n] = F\{F\{F\{F\{x[n]\}\}\}\}.$$

For the sequence  $x[n] = \{1, 2, 1, 3\}$ , the value of  $Y[0]$  is \_\_\_\_\_.

**Ans. (112)**

$$y[n] = N^2 x[n]$$

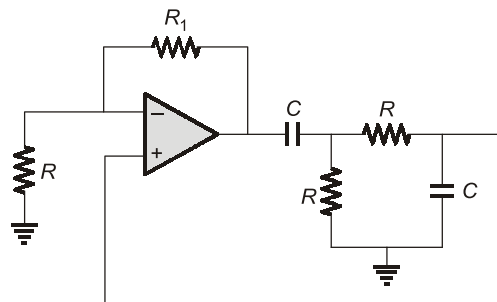
$$y[n] = N^2 x[n]$$

$$\therefore N = 4$$

$$\begin{aligned} Y[k] \Big|_{k=0} &= \sum_{n=0}^3 y[n] = \sum_{n=0}^3 N^2 x[n] \\ &= N^2 [x[0] + x[1] + x[2] + x[3]] \\ &= (4)^2 [1 + 2 + 1 + 3] = 16 \times 7 = 112 \end{aligned}$$

**End of Solution**

**Q.47** In the circuit below, the opamp is ideal.



If the circuit is to show sustained oscillations, the respective values of  $R_1$  and the corresponding frequency of oscillation are \_\_\_\_\_.

- |                                   |                                    |
|-----------------------------------|------------------------------------|
| (a) $2R$ and $1/(2\pi\sqrt{6}RC)$ | (b) $29R$ and $1/(2\pi RC)$        |
| (c) $2R$ and $1/(2\pi RC)$        | (d) $29R$ and $1/(2\pi\sqrt{6}RC)$ |

Ans. (c)

For given circuit, frequency of oscillations is  $f_o = \frac{1}{2\pi RC}$ .

For sustained oscillations, minimum gain should be 3.

$$1 + \frac{R_1}{R} = 3$$

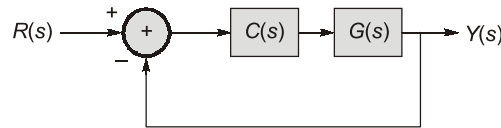
$$\Rightarrow R_1 = 2R$$

Answer is option (c)

End of Solution

**Q.48** A satellite attitude control system, as shown below, has a plant with transfer function

$G(s) = \frac{1}{s^2}$  cascaded with a compensator  $C(s) = \frac{K(s + \alpha)}{s + 4}$ , where  $K$  and  $\alpha$  are positive real constants.



In order for the closed-loop system to have poles at  $-1 \pm j\sqrt{3}$ , the value of  $\alpha$  must be \_\_\_\_\_.

(a) 0 (b) 3

(c) 1 (d) 2

Ans. (c)

$$G(s)C(s) = \frac{1}{s^2} \frac{k(S + \alpha)}{(S + 4)}$$

Characteristic equation is

$$S^3 + 4S^2 + kS + \alpha = 0 \quad \dots(I)$$

Poles of the system present at  $= -1 \pm j\sqrt{3}$

Characteristic equation is

$$(S + a)[(S + 1)^2 + 3] = 0$$

$$(S + a)(S^2 + 2S + 4) = 0$$

$$S^3 + (2 + a)S^2 + (4 + 2a)S + 4a = 0 \quad \dots(II)$$

Compare equation (I) and (II)

$$2 + a = 4$$

$$a = 2$$

$$4 + 2a = k$$

$$k = 8$$

$$k\alpha = 4a$$

$$\alpha = \frac{8}{8} = 1$$

$$\alpha = 1$$

End of Solution





$$\begin{aligned}
 P_{e4} &= P(r < 2) && \text{where, } r = N(4, 4) \\
 &= F_r(2) \\
 &= 1 - Q\left(\frac{2-4}{2}\right) \\
 &= 1 - Q(-1) \\
 &= Q(1) \\
 P_e &= \frac{1}{3}Q(1) + \frac{2}{3}Q(1) + \frac{1}{3}Q(1) \\
 &= \frac{4}{3}Q(1)
 \end{aligned}$$

End of Solution

**Q.50** Let  $F_1, F_2,$  and  $F_3$  be functions of  $(x, y, z)$ . Suppose that for every given pair of points  $A$  and  $B$  in space, the line integral  $\int_C (F_1 dx + F_2 dy + F_3 dz)$  evaluates to the same value along any path  $C$  that starts at  $A$  and ends at  $B$ . Then which of the following is/are true?

(a) There exists a differentiable scalar function  $f(x, y, z)$  such that

$$F_1 = \frac{\partial f}{\partial x}, F_2 = \frac{\partial f}{\partial y}, F_3 = \frac{\partial f}{\partial z}.$$

(b)  $\frac{\partial F_1}{\partial x} + \frac{\partial F_2}{\partial y} + \frac{\partial F_3}{\partial z} = 0.$

(c)  $\frac{\partial F_3}{\partial y} = \frac{\partial F_2}{\partial z}, \frac{\partial F_1}{\partial z} = \frac{\partial F_3}{\partial x}, \frac{\partial F_2}{\partial x} = \frac{\partial F_1}{\partial y}.$

(d) For every closed path  $\Gamma$ , we have  $\oint_{\Gamma} (F_1 dx + F_2 dy + F_3 dz) = 0.$

**Ans. (a, c, d)**

$\therefore$  Given integral is independent of contour 'C'

$$\int_C (F_1 dx + F_2 dy + F_3 dz) = \int_C \vec{F} \cdot \vec{dr} \text{ is independent of 'C'}$$

Then  $\vec{F}$  is conservative field

$$\therefore \vec{F} = \nabla \phi$$

$$\Rightarrow F_1 = \frac{\partial \phi}{\partial x}, F_2 = \frac{\partial \phi}{\partial y}, F_3 = \frac{\partial \phi}{\partial z}$$

$\therefore$  Option (a) is true.

$\therefore \vec{F}$  is conservative

Then,  $\nabla \times \vec{F} = 0$

$$\Rightarrow \begin{vmatrix} i & j & k \\ \frac{\partial}{\partial x} & \frac{\partial}{\partial y} & \frac{\partial}{\partial z} \\ F_1 & F_2 & F_3 \end{vmatrix} = \vec{0}$$

$$= i \left( \frac{\partial F_3}{\partial y} - \frac{\partial F_2}{\partial z} \right) - j \left( \frac{\partial F_3}{\partial x} - \frac{\partial F_1}{\partial z} \right) + k \left( \frac{\partial F_2}{\partial x} - \frac{\partial F_1}{\partial y} \right) = 0\hat{i} + 0\hat{j} + 0\hat{k}$$

Equate on both sides,

We get, 
$$\frac{\partial F_3}{\partial y} = \frac{\partial F_2}{\partial z}, \quad \frac{\partial F_3}{\partial x} = \frac{\partial F_1}{\partial z}, \quad \frac{\partial F_2}{\partial x} = \frac{\partial F_1}{\partial y}$$

∴ Option (c) is true.

If  $\vec{F}$  is irrotational then,

$$\oint_C F_1 dx + F_2 dy + F_3 dz = 0$$

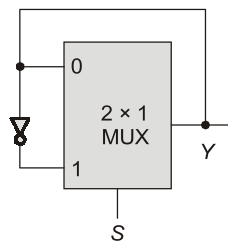
∴ Option (d) is also true.

But, 
$$\nabla \cdot \vec{F} = \nabla \cdot (\nabla \phi) \neq 0$$

∴ Option (b) is false.

End of Solution

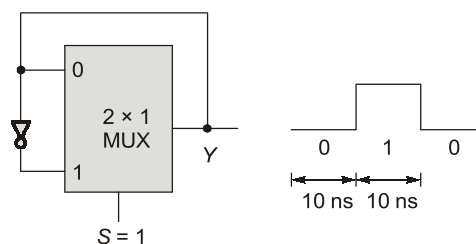
**Q.51** The propagation delay of the  $2 \times 1$  MUX shown in the circuit is 10 ns. Consider the propagation delay of the inverter as 0 ns.



If  $S$  is set to 1 then the output  $Y$  is \_\_\_\_\_.

- (a) constant at 1
- (b) a square wave of frequency 100 MHz
- (c) a square wave of frequency 50 MHz
- (d) constant at 0

**Ans.** (c)



∴ 
$$T_c = 10 + 10 = 20 \text{ nsec}$$

∴ 
$$f_c = \frac{1}{T_c} = \frac{10^9}{20} = 50 \text{ MHz}$$

End of Solution

**Q.52** A non-degenerate n-type semiconductor has 5% neutral dopant atoms. Its Fermi level is located at 0.25 eV below the conduction band ( $E_C$ ) and the donor energy level ( $E_D$ ) has a degeneracy of 2. Assuming the thermal voltage to be 20 mV. The difference between  $E_C$  and  $E_D$  (in eV, rounded off to two decimal places) is \_\_\_\_\_.

**Ans. (0.18)**

5% neutral donor atoms/dopant atoms means 95% donor atoms are ionized.  
Concentration of electrons occupying the donor level is given as

$$n_d = \frac{N_d}{1 + \frac{1}{g} \exp\left(\frac{E_D - E_F}{kT}\right)}$$

and  $n_d = N_d - N_d^+$  where  $N_d^+$  is ionized donor atoms concentration.  
according to question

$$\begin{aligned} n_d &= 5\% \text{ of } N_d \\ g &= 2 \text{ degeneracy factor} \end{aligned}$$

$$\frac{5}{100} N_d = \frac{N_d}{1 + \frac{1}{g} \exp\left(\frac{E_D - E_F}{kT}\right)}$$

$$\frac{1}{20} = \frac{1}{1 + \frac{1}{g} \exp\left(\frac{E_D - E_F}{kT}\right)}$$

$$1 + \frac{1}{g} \exp\left(\frac{E_D - E_F}{kT}\right) = 20$$

$$\exp\left(\frac{E_D - E_F}{kT}\right) = 38$$

$$\frac{E_D - E_F}{kT} = \ln(38) \quad \left\{ \text{given } V_T = \frac{kT}{q} = 20 \text{ mV} \right\}$$

$$\begin{aligned} E_D - E_F &= \ln(38) \times 0.020 \\ &= 0.07275 \text{ eV} \end{aligned}$$

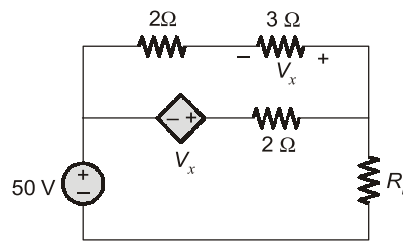
given:  $E_C - E_F = 0.25 \text{ eV}$

$\therefore E_C - E_D + E_D - E_F = 0.25 \text{ eV}$

$$\begin{aligned} E_C - E_D &= 0.25 \text{ eV} - (E_D - E_F) \\ &= 0.25 \text{ eV} - 0.07275 \text{ eV} \\ &= 0.17725 \text{ eV} \simeq 0.18 \text{ eV} \end{aligned}$$

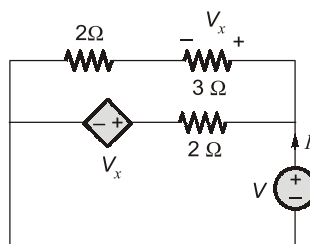
End of Solution

**Q.53** In the network shown below, maximum power is to be transferred to the load  $R_L$ .



The value of  $R_L$  (in  $\Omega$ ) is \_\_\_\_\_.

**Ans. (2.5)**



$$I = \frac{V - V_x}{2} + \frac{V}{5} = \frac{V}{2} - \frac{V_x}{2} + \frac{V}{5}$$

But,  $V_x = \frac{V}{5} \times 3$

$$\therefore I = \frac{V}{2} - \frac{1}{2} \times \frac{3V}{5} + \frac{V}{5} = \frac{V}{2} - \frac{3V}{10} + \frac{V}{5}$$

$$I = \frac{5V - 3V + 2V}{10} = \frac{4V}{10}$$

$$\therefore \frac{V}{I} = \frac{10}{4} = 2.5 \Omega$$

**End of Solution**

**Q.54** A lossless transmission line with characteristic impedance  $Z_0 = 50 \Omega$  is terminated with an unknown load. The magnitude of the reflection co-efficient is  $|\Gamma| = 0.6$ . As one moves towards the generator from the load, the maximum value of the input impedance magnitude looking towards the load (in  $\Omega$ ) is \_\_\_\_\_.

**Ans. (200)**

As we know that

$$Z_{\max} = SZ_0$$

Now,

$$S = \frac{1 + |\Gamma|}{1 - |\Gamma|} = \frac{1 + 0.6}{1 - 0.6} = \frac{1.6}{0.4} = 4$$

$$\therefore Z_{\max} = 4 \times 50 = 200 \Omega.$$

**End of Solution**

**Q.55** Consider the matrix  $\begin{bmatrix} 1 & k \\ 2 & 1 \end{bmatrix}$ , where  $k$  is a positive real number. Which of the following vectors is/are eigenvector(s) of this matrix?

(a)  $\begin{bmatrix} 1 \\ \sqrt{2/k} \end{bmatrix}$

(b)  $\begin{bmatrix} 1 \\ -\sqrt{2/k} \end{bmatrix}$

(c)  $\begin{bmatrix} \sqrt{2k} \\ -1 \end{bmatrix}$

(d)  $\begin{bmatrix} \sqrt{2k} \\ 1 \end{bmatrix}$

**Ans.** (a, b)

C Eq is  $|A - \lambda I| = 0$

or  $\lambda^2 - 2\lambda + (1 - 2K) = 0$

$$\lambda = 1 \pm \sqrt{2K}$$

E vector for  $\lambda = 1 \pm \sqrt{2K}$  :

$$AX = \lambda X$$

$$(A - \lambda I)X = 0$$

$$\begin{bmatrix} -\sqrt{2K} & K \\ 2 & -\sqrt{2K} \end{bmatrix} \begin{bmatrix} x_1 \\ x_2 \end{bmatrix} = \begin{bmatrix} 0 \\ 0 \end{bmatrix}$$

$$\Rightarrow -\sqrt{2K}x_1 + Kx_2 = 0$$

or  $x_1 = \sqrt{\frac{K}{2}}x_2$

$$X = \begin{bmatrix} x_1 \\ x_2 \end{bmatrix} = \begin{bmatrix} \sqrt{K/2} \\ 1 \end{bmatrix} \approx \begin{bmatrix} 1 \\ \sqrt{K} \end{bmatrix}$$

Similarly other  $E$  vector is

$$X = \begin{bmatrix} -\sqrt{K/2} \\ 1 \end{bmatrix} = \begin{bmatrix} 1 \\ -\sqrt{K} \end{bmatrix}$$

End of Solution

