



GATE 2023

**ELECTRICAL
ENGINEERING**

**Questions
& Solutions**



Corporate Office: 44-A/1, Kalu Sarai, New Delhi-110016
MADE EASY Centres : Delhi , Hyderabad , Jaipur, Bhopal,
Lucknow, Bhubaneswar, Pune, Kolkata



9021300500



www.madeeasy.in

**Exam held
on 05th Feb, 2023
Forenoon
Session**

SECTION - A

GENERAL APTITUDE

Q.1 Rafi told Mary, "I am thinking of watching a film this weekend."

The following reports the above statement in indirect speech :

Rafi told Mary that he _____ of watching a film that weekend.

- (a) thought (b) is thinking
(c) am thinking (d) was thinking

Ans. (d)

End of Solution

Q.2 Permit : _____ :: Enforce : Relax (by word meaning)

- (a) Allow (b) Forbid
(c) License (d) Reinforce

Ans. (b)

FORBID is antonym of PERMIT.

End of Solution

Q.3 Given a fair six-faced dice where the faces are labelled '1', '2', '3', '4', '5' and '6', what is the probability of getting a '1' on the first roll of the dice and a '4' on the second roll?

- (a) $\frac{1}{36}$ (b) $\frac{1}{6}$
(c) $\frac{5}{6}$ (d) $\frac{1}{3}$

Ans. (a)

$$P(1) = \frac{1}{6}$$

$$P(4) = \frac{1}{6}$$

$$\text{Required probability} = \frac{1}{6} \times \frac{1}{6} = \frac{1}{36}$$

End of Solution

- Q.4** A recent survey shows that 65% of tobacco users were advised to stop consuming tobacco. The survey also shows that 3 out of 10 tobacco users attempted to stop using tobacco.

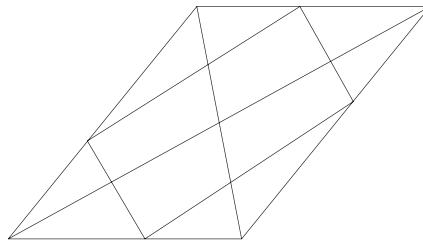
Based only on the information in the above passage, which one of the following options can be logically inferred with *certainty*?

- (a) A majority of tobacco users who were advised to stop consuming tobacco made an attempt to do so.
- (b) A majority of tobacco users who were advised to stop consuming tobacco did not attempt to do so.
- (c) Approximately 30% of tobacco users successfully stopped consuming tobacco.
- (d) Approximately 65% of tobacco users successfully stopped consuming tobacco.

Ans. (b)

End of Solution

- Q.5** How many triangles are present in the given figure?



- (a) 12
- (b) 16
- (c) 20
- (d) 24

Ans. (c)

Total number of triangles is 20.

End of Solution

- Q.6** Students of all the departments of a college who have successfully completed the registration process are eligible to vote in the upcoming college elections. However, by the time the due date for registration was over, it was found that surprisingly none of the students from the Department of Human Sciences had completed the registration process.

Based only on the information provided above, which one of the following sets of statement(s) can be logically inferred with *certainty*?

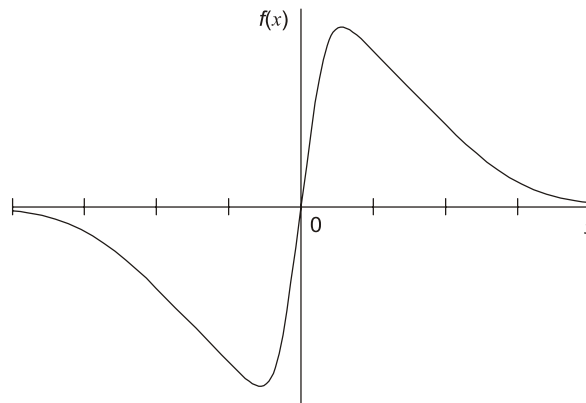
- (i) All those students who would not be eligible to vote in the college elections would certainly belong to the Department of Human Sciences.
- (ii) None of the students from departments other than Human Sciences failed to complete the registration process within the due time.
- (iii) All the eligible voters would certainly be students who are not from the Department of Human Sciences.

- (a) (i) and (ii) (b) (i) and (iii)
(c) Only (i) (d) Only (iii)

Ans. (d)

End of Solution

Q.7 Which one of the following options represents the given graph?



- (a) $f(x) = x^2 2^{-|x|}$ (b) $f(x) = x 2^{-|x|}$
(c) $f(x) = |x| 2^{-x}$ (d) $f(x) = x 2^{-x}$

Ans. (b)

Odd symmetry function.

End of Solution

Q.8 Which one of the options does NOT describe the passage below or follow from it?

We tend to think of cancer as a 'modern' illness because its metaphors are so modern. It is a disease of overproduction, of sudden growth, a growth that is unstoppable, tipped into the abyss of no control. Modern cell biology encourages us to imagine the cell as a molecular machine. Cancer is that machine unable to quench its initial command (to grow) and thus transform into an indestructible, self-propelled automation.

(Adapted from *The Emperor of All Maladies* by Siddhartha Mukherjee)

- (a) It is a reflection of why cancer seems so modern to most of us.
(b) It tells us that modern cell biology uses and promotes metaphors of machinery.
(c) Modern cell biology encourages metaphors of machinery, and cancer is often imagined as a machine.
(d) Modern cell biology never uses figurative language, such as metaphors, to describe or explain anything.

Ans. (d)

End of Solution

Q.9 The digit in the unit's place of the product $3^{999} \times 7^{1000}$ is ____.

- (a) 7 (b) 1
(c) 3 (d) 9

Ans. (a)

$$\Rightarrow 3^{999} \times 7^{1000}$$

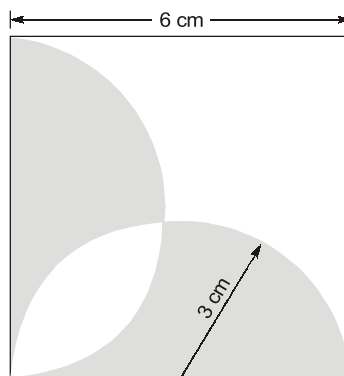
$$= 3^{4(249)} \times 3^3 \times 7^{4(250)}$$

$$= 3^0 \times 3^3 \times 7^0 = 1 \times 7 \times 1 = 7$$

Unit place = 7

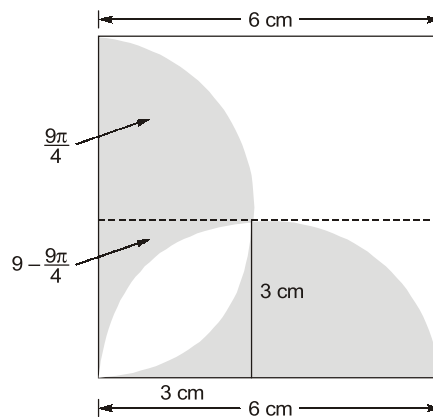
End of Solution

Q.10 A square with sides of length 6 cm is given. The boundary of the shaded region is defined by two semi-circles whose diameters are the sides of the square, as shown. The area of the shaded region is ____ cm².



- (a) 6π (b) 18
(c) 20 (d) 9π

Ans. (b)



$$= 2 \left\{ \left(9 - \frac{9\pi}{4} \right) + \frac{9\pi}{4} \right\} = 18$$

End of Solution

■■■■



NST-2 NATIONAL SCHOLARSHIP TEST 2024

For **ESE, GATE & PSUs 2024**
Offline & Online Long-Term Courses

Register at : www.madeeasy.in

Last Date to Register (Online) : **21st Feb, 2023**

Test Date (Online) : **27th Feb, 2023**

Time Duration 45 Minutes	Total Questions 50 Questions	Total Marks 100 Marks	Negative Marking 0.66 Marks	Streams CE, ME, EE, EC, CS, CH
-----------------------------	---------------------------------	--------------------------	--------------------------------	-----------------------------------


9021300500


nst@madeeasy.in


nst.madeeasy.in

Scan to
Register 

Scholarship applicable on batches commencing between
1st March, 2023 to 31st May, 2023

Delhi Centre : 44 - A/1, Kalu Sarai, Near Hauz Khas Metro Station, New Delhi - 110016 | **Ph :** 9021300500

MADE EASY Centres : Delhi | Hyderabad | Jaipur | Bhopal | Lucknow | Bhubaneswar | Pune | Kolkata | www.madeeasy.in

SECTION - B

TECHNICAL

- Q.11** For a given vector $\mathbf{w} = [1 \ 2 \ 3]^T$, the vector normal to the plane defined by $\mathbf{w}^T \mathbf{x} = 1$ is
- (a) $[-2 \ -2 \ 2]^T$ (b) $[3 \ 0 \ -1]^T$
(c) $[3 \ 2 \ 1]^T$ (d) $[1 \ 2 \ 3]^T$

Ans. (d)

Given vector : $W = \begin{bmatrix} 1 \\ 2 \\ 3 \end{bmatrix}$

Given plane : $W^T x = 1$

$$\Rightarrow [1 \ 2 \ 3] \begin{bmatrix} x \\ y \\ z \end{bmatrix} = 1$$

$\phi : x + 2y + 3z = 1$

Normal vector to plane $\phi : W^T x = 1$ is $\vec{\nabla} \phi$

$$\vec{\nabla} \phi = i \frac{\partial \phi}{\partial x} + j \frac{\partial \phi}{\partial y} + k \frac{\partial \phi}{\partial z}$$

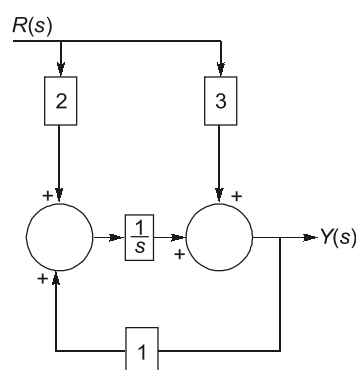
$$= i(1) + 2j + 3k$$

$$\nabla \phi = i + 2j + 3k$$

\therefore Normal vector to given plane is $[1 \ 2 \ 3]^T$

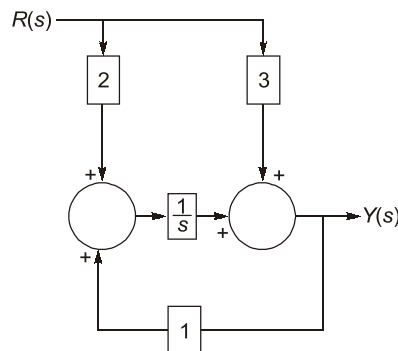
End of Solution

- Q.12** For the block diagram shown in the figure, the transfer function $\frac{Y(s)}{R(s)}$ is



- (a) $\frac{2s+3}{s+1}$ (b) $\frac{3s+2}{s-1}$
(c) $\frac{s+1}{3s+2}$ (d) $\frac{3s+2}{s+1}$

Ans. (b)



By signal flow graph

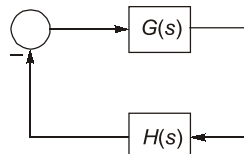
$$\frac{Y(s)}{R(s)} = \frac{3 + \frac{2}{s}}{1 - \left(\frac{1}{s}\right)} = \frac{3s + 2}{s - 1}$$

End of Solution

Q.13 In the Nyquist plot of the open-loop transfer function

$$G(s)H(s) = \frac{3s + 5}{s - 1}$$

corresponding to the feedback loop shown in the figure, the infinite semi-circular arc of the Nyquist contour in s -plane is mapped into a point at

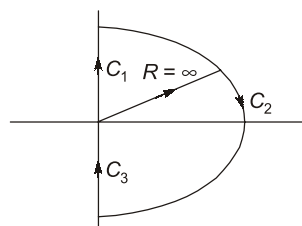


- (a) $G(s)H(s) = \infty$
(c) $G(s)H(s) = 3$

- (b) $G(s)H(s) = 0$
(d) $G(s)H(s) = -5$

Ans. (c)

Given : OLTF, $GH = \frac{3s + 5}{s - 1}$



Here for mapping C_2 ,

$$GH = \lim_{R \rightarrow \infty} \frac{3Re^{j\theta} + 5}{Re^{j\theta} - 1}$$

$$GH = 3$$

End of Solution

- Q.14** Consider a unity-gain negative feedback system consisting of the plant $G(s)$ (given below) and a proportional-integral controller. Let the proportional gain and integral gain be 3 and 1, respectively. For a unit step reference input, the final values of the controller output and the plant output, respectively, are

$$G(s) = \frac{1}{s-1}$$

(a) ∞, ∞

(b) 1, 0

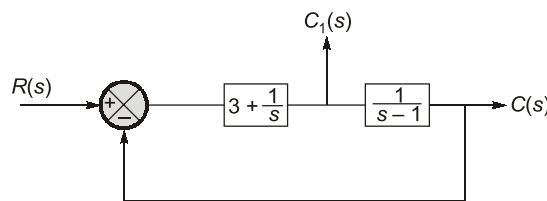
(c) 1, -1

(d) -1, 1

Ans. (d)

$$G(s) = \frac{1}{s-1}$$

$$H(s) = 1$$



$$\frac{C(s)}{R(s)} = \frac{3s+1}{s^2+2s+1}$$

\therefore

$$R(s) = \frac{1}{s}$$

$$C_{ss} = \lim_{s \rightarrow 0} sC(s)$$

$$C_{ss} = \lim_{s \rightarrow 0} s \times \frac{3s+1}{s^2+2s+1} \times \frac{1}{s} = +1$$

As now,

$$C(s) = C_1(s) \times \frac{1}{s-1}$$

$$C_1(s) = (s-1)C(s)$$

$$C_1(s) = (s-1) \times \left[\frac{3s+1}{s(s^2+2s+1)} \right]$$

$$(C_1)_{ss} = \lim_{s \rightarrow 0} sC_1(s) = -1$$

End of Solution

Q.15 The following columns present various modes of induction machine operation and the ranges of slip

(A) Mode of Operation	(B) Range of Slip
(a) Running in generator mode	(p) From 0.0 to 1.0
(b) Running in motor mode	(q) From 1.0 to 2.0
(c) Plugging in motor mode	(r) From -1.0 to 0.0

The correct matching between the elements in column **A** with those of column **B** is

- | | |
|-----------------------|-----------------------|
| (a) a-r, b-p, and c-q | (b) a-r, b-q, and c-p |
| (c) a-p, b-r, and c-q | (d) a-q, b-p, and c-r |

Ans. (a)

Mode	Slip Range
Generator Mode	-1.0 to 0.0
Motor Mode	0.0 to 1.0
Plugging Mode	1.0 to 2.0

End of Solution

Q.16 A 10-pole, 50 Hz, 240 V, single phase induction motor runs at 540 RPM while driving rated load. The frequency of induced rotor currents due to backward field is

- | | |
|------------|-----------|
| (a) 100 Hz | (b) 95 Hz |
| (c) 10 Hz | (d) 5 Hz |

Ans. (b)

The slip for backward slip,

$$s_b = 2 - s_f = 2 - s$$

The slip,
$$s = \frac{N_s - N}{N_s} = \frac{600 - 540}{600} = 0.1$$

So,
$$s_b = 2 - 0.1 = 1.9$$

So, frequency due to backward field,

$$s_b f = 1.9 \times 50 = 95 \text{ Hz}$$

End of Solution

Q.17 A continuous-time system that is initially at rest is described by

$$\frac{dy(t)}{dt} + 3y(t) = 2x(t)$$

where $x(t)$ is the input voltage and $y(t)$ is the output voltage. The impulse response of the system is

- | | |
|--------------------|------------------------------|
| (a) $3e^{-2t}$ | (b) $\frac{1}{3}e^{-2t}u(t)$ |
| (c) $2e^{-3t}u(t)$ | (d) $2e^{-3t}$ |

Ans. (c)

$$\frac{dy(t)}{dt} + 3y(t) = 2x(t) \quad \dots(1)$$

For impulse response

$$x(t) = \delta(t)$$

$$\therefore y(t) = h(t)$$

So, taking laplace transform of equation (1)

$$sH(s) + 3H(s) = 2(1)$$

$$H(s) = \frac{2}{s+3}$$

\Downarrow

$$h(t) = 2e^{-3t}u(t)$$

End of Solution

Q.18 The Fourier transform $X(\omega)$ of the signal $x(t)$ is given by

$$X(\omega) = 1, \quad \text{for } |\omega| < \omega_o$$

$$= 0, \quad \text{for } |\omega| > \omega_o$$

Which one of the following statements is true?

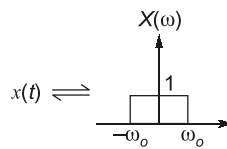
(a) $x(t)$ tends to be an impulse as $\omega_o \rightarrow \infty$.

(b) $x(0)$ decreases as ω_o increases.

(c) At $t = \frac{\pi}{2\omega_o}$, $x(t) = -\frac{1}{\pi}$

(d) At $t = \frac{\pi}{2\omega_o}$, $x(t) = \frac{1}{\pi}$

Ans. (a)

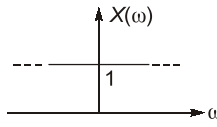


$$\therefore x(t) = \frac{\sin \omega_o t}{\pi t}$$

$$\text{At } t = \frac{\pi}{2\omega_o}, \quad x\left(\frac{\pi}{2\omega_o}\right) = \frac{\sin \frac{\pi}{2}}{\pi \cdot \frac{\pi}{2\omega_o}} = \frac{2\omega_o}{\pi^2}$$

\therefore Option (c) and (d) are wrong.

If $\omega_o \rightarrow \infty$, then



i.e., $X(\omega) = \text{DC-signal} = 1$

$\therefore x(t) = \delta(t)$

So, option (b) is correct.

$$\text{Now, } x(0) = \frac{\text{Area of } X(\omega)}{2\pi} = \frac{2\omega_o}{2\pi} = \frac{\omega_o}{\pi}$$

$\therefore x(0)$ will increase if ω_o increases.

So, option (a) is wrong.

End of Solution

Q.19 The Z-transform of a discrete signal $x[n]$ is

$$X(z) = \frac{4z}{\left(z - \frac{1}{5}\right)\left(z - \frac{2}{3}\right)(z - 3)} \text{ with ROC} = R$$

Which one of the following statements is true?

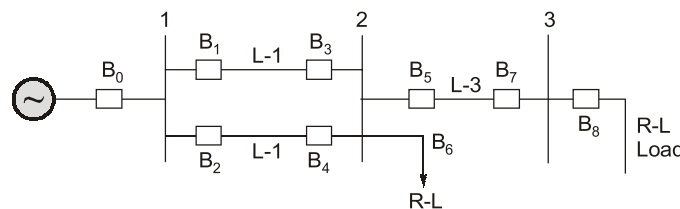
- (a) Discrete-time Fourier transform of $x[n]$ converges if R is $|z| > 3$
- (b) Discrete-time Fourier transform of $x[n]$ converges if R is $\frac{2}{3} < |z| < 3$
- (c) Discrete-time Fourier transform of $x[n]$ converges if R is such that $x[n]$ is a left-sided sequence
- (d) Discrete-time Fourier transform of $x[n]$ converges if R is such that $x[n]$ is a right-sided sequence

Ans. (b)

If ROC is $\frac{2}{3} < |z| < 3$ then it is including $Z = 1$ circle or unit-circle. So, DTFT will converge.

End of Solution

Q.20 For the three-bus power system shown in the figure, the trip signals to the circuit breakers B_1 to B_9 are provided by overcurrent relays R_1 to R_9 , respectively, some of which have directional properties also. The necessary condition for the system to be protected for short circuit fault at any part of the system between bus 1 and the R-L loads with isolation of minimum portion of the network using minimum number of directional relays is





Announcing

FOUNDATION COURSES for **ESE 2024 • GATE 2024**

The Foundation Batches are taught comprehensively which cover the requirements of all technical-syllabus based examinations.

- ✓ Classes by experienced & renowned faculties.
- ✓ Exam oriented learning ecosystem.
- ✓ Systematic subject sequence & timely completion of syllabus.
- ✓ Result oriented teaching with comprehensive coverage.
- ✓ Comprehensive & updated study material.
- ✓ Concept of problems solving through workbooks.
- ✓ Regular performance assessment through class tests.
- ✓ Similar teaching pedagogy in online and offline classes.

OFFLINE BATCHES AT DELHI

Commencing from

- 14th Mar, 2023 • 11th April, 2023
- 4th May, 2023 • 25th May, 2023

LIVE-ONLINE BATCHES

Commencing from

- 15th Feb, 2023 • 14th Mar, 2023
- 15th Apr, 2023 • 15th May, 2023

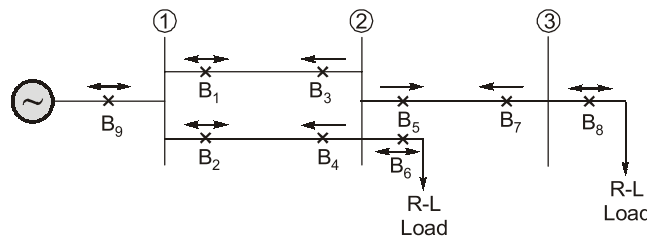
Admissions open

Delhi Centre : 44 - A/1, Kalu Sarai, Near Hauz Khas Metro Station, New Delhi - 110016 | **Ph :** 9021300500

MADE EASY Centres : Delhi | Hyderabad | Jaipur | Bhopal | Lucknow | Bhubaneswar | Pune | Kolkata | www.madeeasy.in

- (a) R_3 and R_4 are directional overcurrent relays blocking faults towards bus 2.
- (b) R_3 and R_4 are directional overcurrent relays blocking faults towards bus 2 and R_7 is directional overcurrent relay blocking faults towards bus 3.
- (c) R_3 and R_4 are directional overcurrent relays blocking faults towards Line 1 and Line 2, respectively, R_7 is directional overcurrent relay blocking faults towards Line 3 and R_5 is directional overcurrent relay blocking faults towards bus 2.
- (d) R_3 and R_4 are directional overcurrent relays blocking faults towards Line 1 and Line 2, respectively.

Ans. (c)



B_3 , B_4 and B_5 , B_7 are directional over current relays.

All remaining are (B_1 , B_2 , B_6 , B_8 , B_9)

Now directional over current relays.

End of Solution

Q.21 The expressions of fuel cost of two thermal generating units as a function of the respective power generation P_{G1} and P_{G2} are given as :

$$F_1(P_{G1}) = 0.1aP_{G1}^2 + 40P_{G1} + 120 \text{ Rs/hour} \quad 0 \text{ MW} \leq P_{G1} \leq 350 \text{ MW}$$

$$F_2(P_{G2}) = 0.2aP_{G2}^2 + 30P_{G2} + 100 \text{ Rs/hour} \quad 0 \text{ MW} \leq P_{G2} \leq 300 \text{ MW}$$

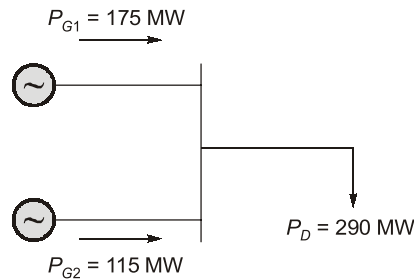
where a is a constant. For a given value of a , optimal dispatch requires the total load of 290 MW to be shared as $P_{G1} = 175 \text{ MW}$ and $P_{G2} = 115 \text{ MW}$. With the load remaining unchanged, the value of a is increased by 10% and optimal dispatch is carried out. The changes in P_{G1} and the total cost of generation, $F (= F_1 + F_2)$ in Rs/hour will be as follows :

- (a) P_{G1} will decrease and F will increase.
- (b) Both P_{G1} and F will increase.
- (c) P_{G1} will increase and F will decrease.
- (d) Both P_{G1} and F will decrease.

Ans. (a)

$$C_1(P_{G1}) = 0.10P_{G1}^2 + 40P_{G1} + 120 \text{ Rs/hr} \quad 0 \text{ MW} \leq P_{G1} \leq 350 \text{ MW}$$

$$C_2(P_{G2}) = 0.10P_{G2}^2 + 30P_{G2} + 100 \text{ Rs/hr} \quad 0 \text{ MW} \leq P_{G2} \leq 300 \text{ MW}$$



⇒

$$IC_1(P_{G1}) = (0.2aP_{G1} + 40) \text{ Rs/Mwhr}$$

$$IC_2(P_{G2}) = (0.4P_{G2} + 30) \text{ Rs/Mwhr}$$

For economic scheduling of $P_D = 290$ MW, it is given that

$$P_{G1} = 175 \text{ MW}$$

$$P_{G2} = 115 \text{ MW}$$

$$\text{Hence, } IC_1(P_{G1} = 175) = IC_2(P_{G2} = 115)$$

$$\Rightarrow 0.2a \times 175 + 40 = 0.4 \times 115 + 30$$

$$a = 1.02857$$

⇒

$$F = E_1(P_{G1} = 175) + C_2(P_{G2} = 115) \\ = 10169.99 + 6195 = 16365 \text{ Rs/hr.}$$

Now if a is increased by 10%

$$a' = 1.1a = 1.1314$$

For economic scheduling of some demand

$$P_D = 290 \text{ MW}$$

$$P_{G1} + P_{G2} = 290$$

$$IC_1 = IC_2$$

$$0.2 \times 1.1314 \times P_{G1} + 40 = 0.4P_{G2} + 30$$

$$0.2262P_{G1} - 0.4P_{G2} = -10$$

Solving eqn. (1) and (2)

$$P_{G1} = 169.27 \text{ MW}; P_{G2} = 120.70 \text{ MW}$$

We can see P_{G1} has decreased.

$$F = C_1(P_{G1} = 169.27) + C_2(P_{G2} = 120.70) \\ = 10132.52 + 6634.7 \\ = 16767.21 \text{ Rs/hr.}$$

We can see total cost has increased.

So, correct answer is option (a).

End of Solution

- Q.22** The four stator conductors (A, A', B and B') of a rotating machine are carrying DC currents of the same value, the directions of which are shown in the figure (i). The rotor coils $a-a'$ and $b-b'$ are formed by connecting the back ends of conductors ' a ' and ' a' ' and ' b ' and ' b' ', respectively, as shown in figure (ii). The e.m.f. induced in coil $a-a'$ and coil $b-b'$ are denoted by $E_{a-a'}$ and $E_{b-b'}$, respectively. If the rotor is rotated at uniform angular speed ω rad/s in the clockwise direction then which of the following correctly describes the $E_{a-a'}$ and $E_{b-b'}$?

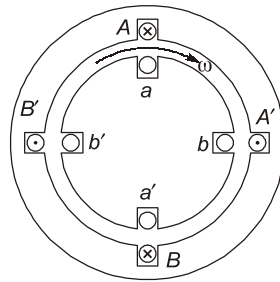


fig. (i) cross-section view

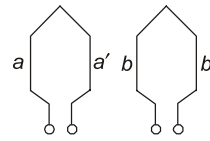


fig. (ii) rotor winding connection diagram

- (a) $E_{a-a'}$ and $E_{b-b'}$ have finite magnitudes and are in the same phase.
- (b) $E_{a-a'}$ and $E_{b-b'}$ have finite magnitudes with $E_{b-b'}$ leading $E_{a-a'}$
- (c) $E_{a-a'}$ and $E_{b-b'}$ have finite magnitudes with $E_{a-a'}$ leading $E_{b-b'}$
- (d) $E_{a-a'} = E_{b-b'} = 0$

Ans. (d)

End of Solution

Q.23 The chopper circuit shown in figure (i) feeds power to a 5 A DC constant current source. The switching frequency of the chopper is 100 kHz. All the components can be assumed to be ideal. The gate signals of switches S_1 and S_2 are shown in figure (ii). Average voltage across the 5 A current source is

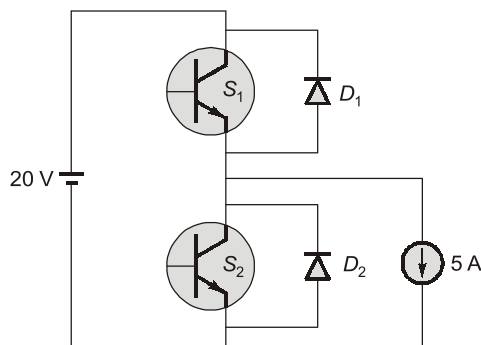


Fig. (i)

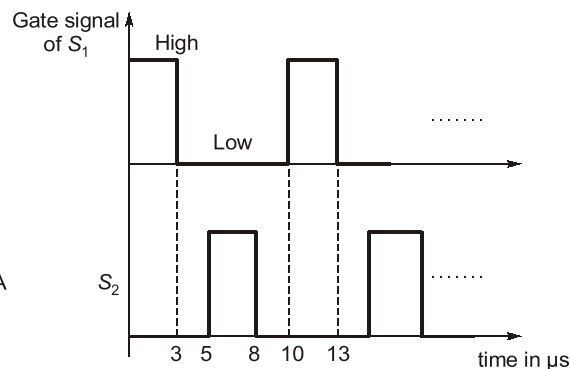
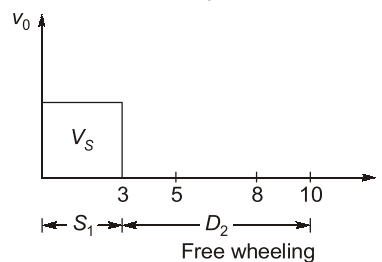


Fig. (ii)

- (a) 10 V
- (b) 6 V
- (c) 12 V
- (d) 20 V

Ans. (b)

Let voltage across 5 Amp current is v_0

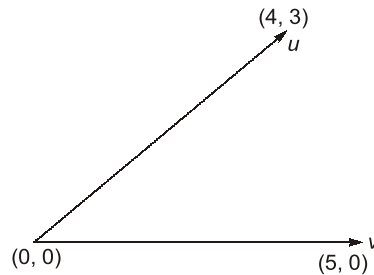


So, average voltage,

$$V_{0 \text{ (avg)}} = \frac{20 \times 3}{10} = 6 \text{ V}$$

End of Solution

- Q.24** In the figure, the vectors \mathbf{u} and \mathbf{v} are related as: $\mathbf{A}\mathbf{u} = \mathbf{v}$ by a transformation matrix \mathbf{A} . The correct choice of \mathbf{A} is



(a) $\begin{bmatrix} \frac{4}{5} & \frac{3}{5} \\ \frac{3}{5} & \frac{4}{5} \end{bmatrix}$

(b) $\begin{bmatrix} \frac{4}{5} & -\frac{3}{5} \\ \frac{3}{5} & \frac{4}{5} \end{bmatrix}$

(c) $\begin{bmatrix} \frac{4}{5} & \frac{3}{5} \\ \frac{3}{5} & -\frac{4}{5} \end{bmatrix}$

(d) $\begin{bmatrix} \frac{4}{5} & -\frac{3}{5} \\ \frac{3}{5} & -\frac{4}{5} \end{bmatrix}$

Ans. (a)

By verifying $\mathbf{A}\mathbf{u} = \mathbf{v}$ with given options, we get

$$\mathbf{A} = \begin{bmatrix} \frac{4}{5} & \frac{3}{5} \\ \frac{3}{5} & \frac{4}{5} \end{bmatrix}$$

End of Solution

- Q.25** One million random numbers are generated from a statistically stationary process with a Gaussian distribution with mean zero and standard deviation σ_o .

The σ_o is estimated by randomly drawing out 10,000 numbers of samples (x_n). The estimates $\hat{\sigma}_1, \hat{\sigma}_2$ are computed in the following two ways.

$$\hat{\sigma}_1^2 = \frac{1}{10000} \sum_{n=1}^{10000} x_n^2$$

$$\hat{\sigma}_2^2 = \frac{1}{9999} \sum_{n=1}^{10000} x_n^2$$

(a) $E(\hat{\sigma}_2^2) = \sigma_o^2$

(b) $E(\hat{\sigma}_2) = \sigma_o$

(c) $E(\hat{\sigma}_1^2) = \sigma_o^2$

(d) $E(\hat{\sigma}_1) = E(\hat{\sigma}_2)$

Ans. (a)

$$\begin{aligned} E(\hat{\sigma}_2^2) &= \frac{1}{n-1} E[\sum (X_i^2 - n\bar{X}^2)] \\ &= \frac{1}{n-1} [\sum (E(X_i^2) - nE(\bar{X}^2))] \\ &= \frac{1}{n-1} [\sum (\text{Var}(X_i) + E(X_i)^2 - n(\text{Var}(\bar{X}) + E(\bar{X})^2)] \\ &= \frac{1}{n-1} \left[\sum (\sigma_o^2 + \mu^2) - n \left(\frac{\sigma_o^2}{n} + \mu^2 \right) \right] \\ &= \frac{1}{n-1} [n(\sigma_o^2 + \mu^2) - \sigma_o^2 - n\mu^2] \\ &= \frac{1}{n-1} [(n-1)\sigma_o^2] \\ &= \sigma_o^2 \end{aligned}$$

End of Solution

Q.26 A semiconductor switch needs to block voltage V of only one polarity ($V > 0$) during OFF state as shown in figure (i) and carry current in both directions during ON state as shown in figure (ii). Which of the following switch combination(s) will realize the same?

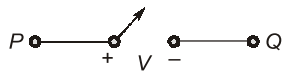


Fig. (i)

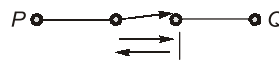
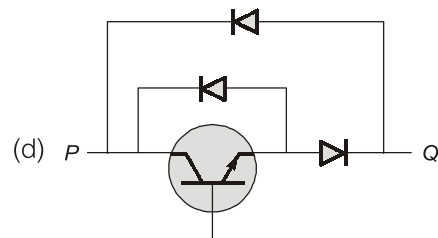
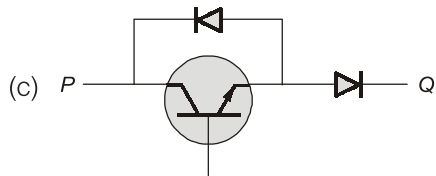
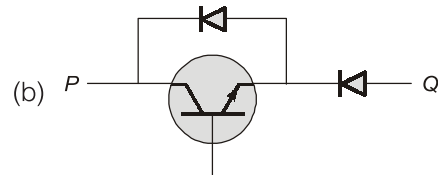
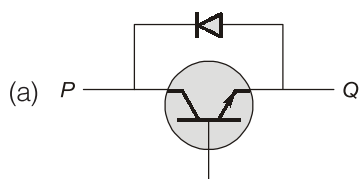


Fig. (ii)



Ans. (a, d)

From given configuration, the current flows in both direction (Bidirectional). The switch also has on drop voltage.

The switch configuration in option (a) and (d) can provide bidirectional current.

End of Solution

Q.27 Which of the following statement(s) is/are true?

- (a) If an LTI system is causal, it is stable.
- (b) A discrete time LTI system is causal if and only if its response to a step input $u[n]$ is 0 for $n < 0$.
- (c) If a discrete time LTI system has an impulse response $h[n]$ of finite duration the system is stable.
- (d) If the impulse response $0 < |h[n]| < 1$ for all n , then the LTI system is stable.

Ans. (b)

As we know for causal LTI-system :

$$h(n) = 0, n < 0$$

If input is $u(n)$, then step-response $S(n)$ will start either from $n = 0$ or right-side of $n = 0$.

i.e., $S(n) = 0, n < 0$

End of Solution

Q.28 The bus admittance (Y_{bus}) matrix of a 3-bus power system is given below.

$$\begin{matrix} & \begin{matrix} 1 & 2 & 3 \end{matrix} \\ \begin{matrix} 1 \\ 2 \\ 3 \end{matrix} & \begin{bmatrix} -j15 & j10 & j5 \\ j10 & -j13.5 & j4 \\ j5 & j4 & -j8 \end{bmatrix} \end{matrix}$$

Considering that there is no shunt inductor connected to any of the buses, which of the following can NOT be true?

- (a) Line charging capacitor of finite value is present in all three lines.
- (b) Line charging capacitor of finite value is present in line 2-3 only.
- (c) Line charging capacitor of finite value is present in line 2-3 only and shunt capacitor of finite value is present in bus 1 only.
- (d) Line charging capacitor of finite value is present in line 2-3 only and shunt capacitor of finite value is present in bus 3 only.

Ans. (a, c)

$$[Y_{Bus}] = j \begin{bmatrix} -15 & 10 & 5 \\ 10 & -13.5 & 4 \\ 5 & 4 & -8 \end{bmatrix} \begin{matrix} \text{Sum} \\ = 0 \\ = j0.5 \\ = j1 \end{matrix}$$



Conventional Questions Practice Programme for ESE & State Services Exams

Commencing from
1st March, 2023

Teaching Hours :
300 to 350 hours

Course Duration :
100 days

**OFFLINE
& ONLINE
COURSE**

Streams :
CE, ME, EE, EC

Key Features

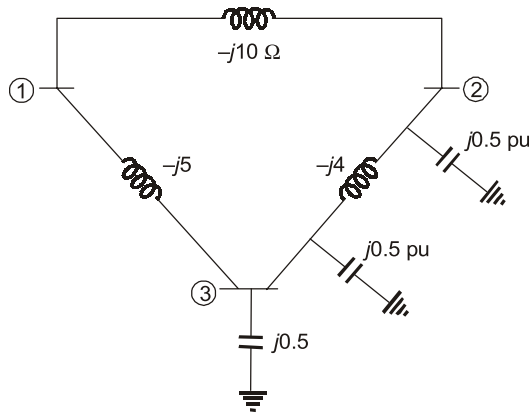
- ✓ In-depth discussion on conventional questions.
- ✓ Beneficial to develop numerical question-solving techniques.
- ✓ Helps to improve answer writing & presentation skills.
- ✓ Discussion on probable questions.
- ✓ Updated Mains workbook with wide range of practice questions.
- ✓ ESE Mains test series will be conducted on every Sunday in synchronization with the subjects.

Note : Offline classes will be conducted at Delhi Centre.

Delhi Centre : 44 - A/1, Kalu Sarai, Near Hauz Khas Metro Station, New Delhi - 110016 | **Ph :** 9021300500

MADE EASY Centres : Delhi | Hyderabad | Jaipur | Bhopal | Lucknow | Bhubaneswar | Pune | Kolkata | www.madeeasy.in

No shunt branch is present at 1st bus.

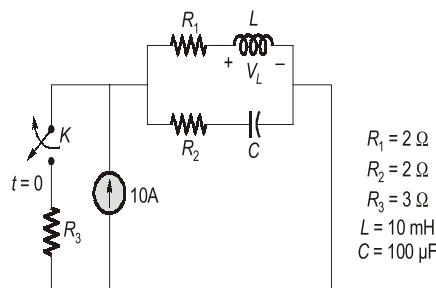


End of Solution

Q.29 The value of parameters of the circuit shown in the figure are :

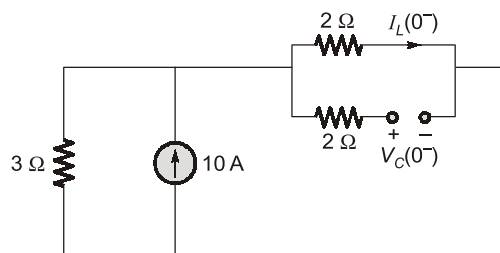
$$R_1 = 2 \, \Omega, R_2 = 2 \, \Omega, R_3 = 3 \, \Omega, L = 10 \, \text{mH}, C = 100 \, \mu\text{F}$$

For time $t < 0$, the circuit is at steady state with the switch 'K' in closed condition. If the switch is opened at $t = 0$, the value of the voltage across the inductor (V_L) at $t = 0^+$ in Volts is _____ (Round off to 1 decimal place).



Ans. (8)

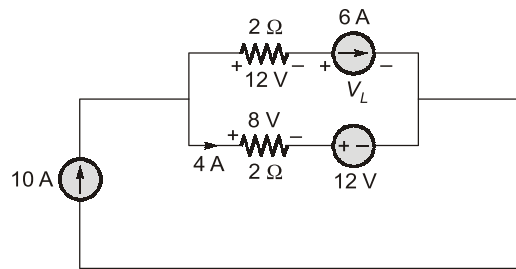
For $t = 0^-$



$$I_L(0^-) = 10 \times \frac{3}{3+2} = 6 \, \text{A}$$

$$V_C(0^-) = 6 \times 2 = 12 \, \text{V}$$

For $t = 0^+$



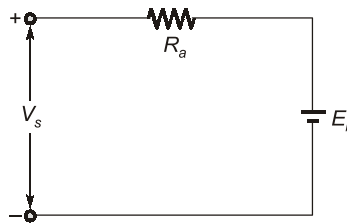
$$20 = 12 + V_L$$

$$V_L = 8 \text{ V}$$

End of Solution

- Q.30** A separately excited DC motor rated 400 V, 15 A, 1500 RPM drives a constant torque load at rated speed operating from 400 V DC supply drawing rated current. The armature resistance is 1.2Ω . If the supply voltage drops by 10% with field current unaltered then the resultant speed of the motor in RPM is _____ (Round off to the nearest integer).

Ans. (1343)



Given torque is constant, $T = K\phi I_a = \text{Constant}$

Field is also unchanged, $\phi = \text{Constant}$

So, $I_a = \text{Constant}$

The back emf with rated voltage

$$E_{b1} = V_s - I_a R_a = 400 - 1.2 \times 15$$

$$E_{b1} = 382 \text{ V}$$

and back emf with 10% drop in supply voltage

$$E_{b2} = V_s - I_{a2} R_a = 400 \times 0.90 - 1.2 \times 15$$

$$E_{b2} = 342 \text{ V}$$

We know

$$E_b \propto N \text{ (for separately excited motor)}$$

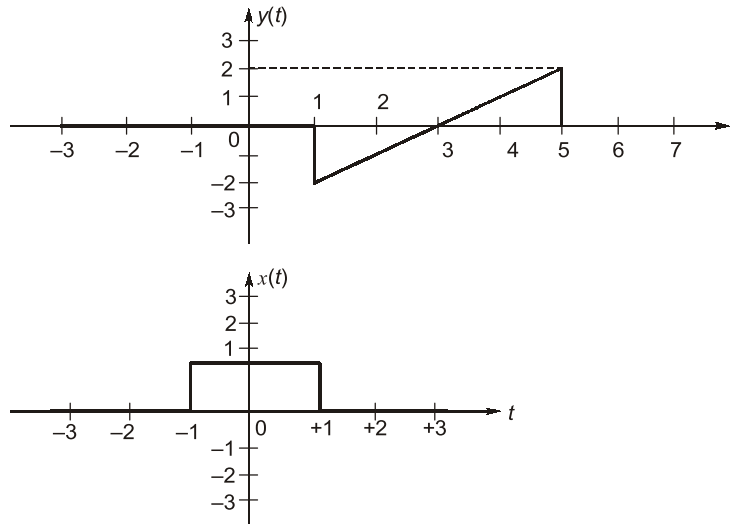
So,
$$\frac{E_{b2}}{E_{b1}} = \frac{N_2}{N_1}$$

$$N_2 = \frac{342}{382} \times 1500 = 1342.93$$

$$N_2 \approx 1343 \text{ rpm}$$

End of Solution

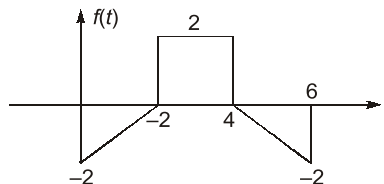
Q.31 For the signals $x(t)$ shown in the figure, $z(t) = x(t) * y(t)$ is maximum at $t = T_1$. Then T_1 in seconds is _____ (Round off to the nearest integer).



Ans. (4)

$$\begin{aligned} z(t) &= y(t) * x(t) = y(t) * [u(t+1) - u(t-1)] \\ &= y(t) * u(t) * [\delta(t+1) - \delta(t-1)] \\ &= u(t) * [y(t) * \delta(t+1) - y(t) * \delta(t-1)] \\ &= u(t) * [y(t+1) - y(t-1)] \\ &= u(t) * f(t) \text{ where } f(t) = y(t+1) - y(t-1) \end{aligned}$$

$$\Rightarrow z(t) = \int_{-\infty}^t f(\tau) d\tau$$



Now,

$$z(t)|_{t=0} = 0$$

$$z(t)|_{t=2} = \text{Area of } f(t) \text{ upto } "t = 2"$$

$$= -\left(\frac{1}{2} \times 2 \times 2\right) = -2$$

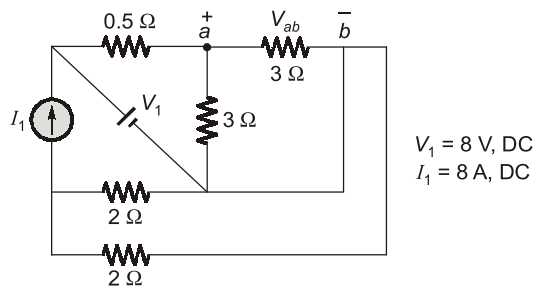
$$z(t)|_{t=4} = \text{Area of } f(t) \text{ upto } "t = 4" = -2 + 4 = 2$$

$$z(t)|_{t=6} = \text{Area of } f(t) \text{ upto } "t = 6" = 0$$

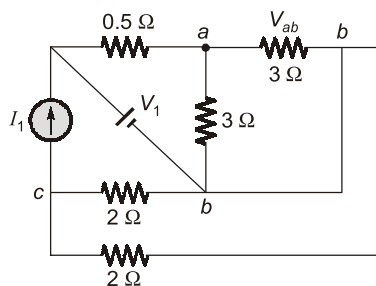
$\therefore z(t)$ is maximum at $t = 4$.

End of Solution

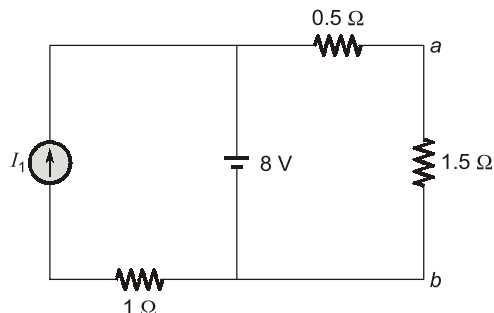
Q.32 For the circuit shown in the figure, $V_1 = 8 \text{ V}$, DC and $I_1 = 8 \text{ A}$, DC. The voltage V_{ab} in Volts is _____ (Round off to 1 decimal place).



Ans. (6)



Circuit can be redrawn



By applying voltage division rule, we can get

$$V_{ab} = 8 \times \frac{1.5}{1.5 + 0.5} = 6 \text{ V}$$

End of Solution

Q.33 A 50 Hz, 275 kV line of length 400 km has the following parameters:

Resistance, $R = 0.035 \text{ } \Omega/\text{km}$;

Inductance, $L = 1 \text{ mH/km}$;

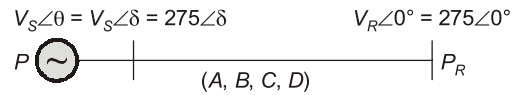
Capacitance, $C = 0.01 \text{ } \mu\text{F/km}$;

The line is represented by the nominal- π model. With the magnitudes of the sending end and the receiving end voltages of the line (denoted by V_S and V_R , respectively) maintained at 275 kV, the phase angle difference (θ) between V_S and V_R required for maximum possible active power to be delivered to the receiving end, in degree is _____ (Round off to 2 decimal places).

Ans. (83.64)

For nominal π model :

$$\begin{aligned} B = Z &= [R + j(2\pi + L)]l \\ &= [0.035 + j(2\pi \times 50 \times 1 \times 10^{-3})] \times 400 \\ &= 126.44 \angle 83.642^\circ = |B| \angle \beta \end{aligned}$$



$$P_R = \left| \frac{V_S V_R}{B} \right| \cos(\beta - \delta) - \left| \frac{A V_R^2}{B} \right| \cos(\beta - \alpha)$$

$$\frac{2P_R}{2\delta} = 0 \Rightarrow \delta = \beta$$

$$\text{At } \delta = \beta \Rightarrow (P_R)_{\max} = \left| \frac{V_S V_R}{B} \right| - \left| \frac{A V_R^2}{B} \right| \cos(\beta - \alpha)$$

For maximum PR occur at

$$\delta = \beta = 83.64^\circ = \theta$$

End of Solution

Q.34 In the following differential equation, the numerically obtained value of $y(t)$, at $t=1$, is _____ (Round off to 2 decimal places).

$$\frac{dy}{dt} = \frac{e^{-at}}{2+at}, \quad \alpha = 0.01 \text{ and } y(0) = 0$$

Ans. (0.50)

$$\text{Given : } \frac{dy}{dt} = \frac{e^{-at}}{2+at}, \quad a = 0.01, \quad y(0) = 0$$

By Taylor's series :

$$y(x) = y(0) + xy'(0) + \frac{x^2}{2} y''(0) + \dots$$

$$= 0 + x \left(\frac{e^{-a(0)}}{2+a(0)} \right) + \frac{x^2}{2} \left(\frac{-3a}{4} \right)$$

$$y(x) = \frac{x}{2} - \frac{3}{8} ax^2$$

$$y(1) = \frac{1}{2} - \frac{3}{8} (0.01) 1^2$$

$$y(1) = 0.5 - 0.00375$$

$$y(1) = 0.496$$

$$y(1) = 0.49 \text{ or } 0.50$$

End of Solution



Rank Improvement Course for **GATE 2024**

Commencing from
1st May, 2023

Teaching Hours :
300 to 350 hours

Course Validity :
Till GATE 2024 Exam

**LIVE-ONLINE
COURSE**

Streams :
CE, ME, EE, EC, CS

Key Features

- ✓ Comprehensive problem-solving sessions by India's top faculties.
- ✓ Focus on improving accuracy & speed.
- ✓ Practice all types of questions to brush up on your concepts.
- ✓ Newly develop workbooks (e-copy) in line with recent trends in GATE.
- ✓ Highly useful for repeaters candidates.

**Download
the App**



Android



iOS

Q.35 Three points in the x - y plane are $(-1, 0.8)$, $(0, 2.2)$ and $(1, 2.8)$. The value of the slope of the best fit straight line in the least square sense is _____ (Round off to 2 decimal places).

Ans. (1)

Given that :

X	-1	0	1
Y	0.8	2.2	2.8

Best fit of straight line ($y = ax + b$) by least square.

Approximation given by normal equations

$$\sum y_i = a \sum x_i + b n \quad \dots(i)$$

$$\sum x_i y_i = a \sum x_i^2 + b \sum x_i \quad \dots(ii)$$

x	y	x_i^2	xy
-1	0.8	1	-0.8
0	2.2	0	0
1	2.8	1	2.8
$\sum x_i = 0$	$\sum y_i = 5.8$	$\sum x^2 = 2$	$\sum xy = 2$

Substituting values in eqn. (1) and (2)

$$5.8 = a(0) + 3b \quad \dots(iii)$$

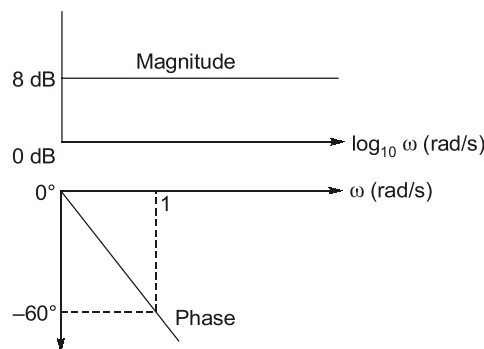
$$2 = a(2) + 0(b) \quad \dots(iv)$$

Solving we get, $a = 1, b = \frac{5.8}{3} = 1.93$

\therefore Slope of best fit $y = ax + b$ is ' a ' = 1.

End of Solution

Q.36 The magnitude and phase plots of an LTI system are shown in the figure. The transfer function of the system is



(a) $2.515e^{-0.032s}$

(b) $\frac{e^{-2.514s}}{s+1}$

(c) $1.04e^{-2.514s}$

(d) $2.51e^{-1.047s}$

Ans. (d)

The transfer function, $TF = Ke^{-sT_d}$ (transportation lag)

Given magnitude, $M = 8 \text{ dB} = 20 \log [K]$

$$K = 2.511$$

and angle at $\omega = 1 \text{ rad/sec} = -60^\circ$

$$\text{Angle, } \phi = -\omega T_d \times \frac{180^\circ}{\pi}$$

$$60^\circ = -1 \times T_d \times \frac{180^\circ}{\pi}$$

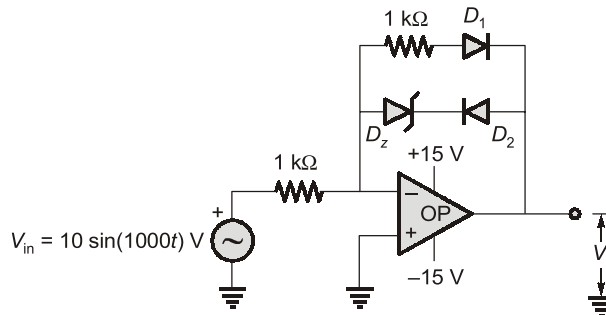
$$T_d = 1.047$$

So, required transfer function

$$TF = 2.511e^{-1.047s}$$

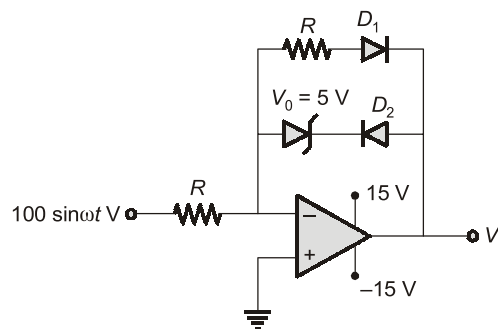
End of Solution

- Q.37** Consider the OP AMP based circuit shown in the figure. Ignore the conduction drops of diodes D_1 and D_2 . All the components are ideal and the breakdown voltage of the Zener is 5 V. Which of the following statements is true?



- (a) The maximum and minimum values of the output voltage V_o are +15 V and -10 V, respectively.
- (b) The maximum and minimum values of the output voltage V_o are +5 V and -15 V, respectively.
- (c) The maximum and minimum values of the output voltage V_o are +10 V and -5 V, respectively.
- (d) The maximum and minimum values of the output voltage V_o are +5 V and -10 V, respectively.

Ans. (d)



$$\alpha\sqrt{\beta} = 4 \quad \dots(1)$$

Given at $\omega = \omega_m$

$$x = \frac{1}{\beta}$$

Amplification, $M = 10 \log_{10} \frac{1}{x} = 6$

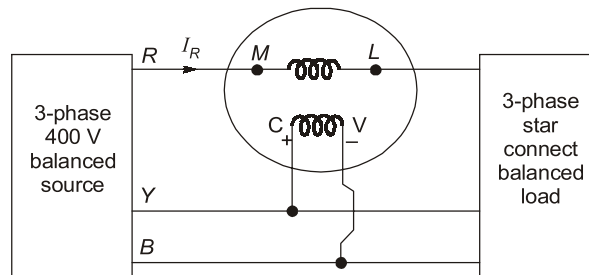
$$10 \log_{10} (\beta) = 6$$

$$\beta = 4$$

and $\alpha = \frac{4}{\sqrt{4}} = 2$

End of Solution

- Q.39** A 3-phase, star-connected, balanced load is supplied from a 3-phase, 400 V (rms), balanced voltage source with phase sequence R-Y-B, as shown in the figure. If the wattmeter reading is -400 W and the line current is $I_R = 2$ A (rms), then the power factor of the load per phase is



- (a) Unity
(b) 0.5 leading
(c) 0.866 leading
(d) 0.707 lagging

Ans. (c)

Given : $V_{\text{line}} = 400$ Volt \Rightarrow Y-connected

$$V_{\text{phase}} = \frac{V_{\text{line}}}{\sqrt{3}} = \frac{400}{\sqrt{3}}$$

$$I_{\text{line}} = I_{\text{phase}} = 2 \text{ Amp}$$

Wattmeter reading = -400 Watt

This Wattmeter connection is related to reactive power measurement by single wattmeter method.

So, Wattmeter reading = $\sqrt{3} \cdot V_{\text{ph}} \cdot I_{\text{ph}} \sin(\phi)$

$$-400 \text{ Watt} = \sqrt{3} \times \frac{400}{\sqrt{3}} \times 2 \times \sin(\phi)$$

$$\sin(\phi) = -\frac{1}{2}$$

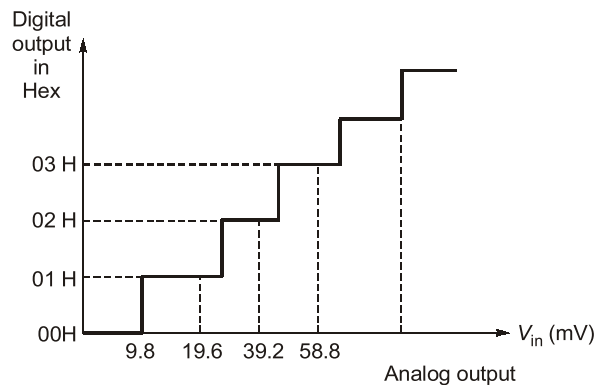
$$\Rightarrow \phi = \sin^{-1}\left(-\frac{1}{2}\right) = -30^\circ \Rightarrow \text{Leading}$$

$$\text{P.f. of load} = \cos(\phi) = \cos(-30^\circ)$$

$$\text{P.f.} = 0.866 \text{ leading}$$

End of Solution

Q.40 An 8-bit ADC converts analog voltage in the range of 0 to +5 V to the corresponding digital code as per the conversion characteristics shown in figure. For $V_{in} = 1.9922$ V, which of the following digital output, given in hex, is true?



- (a) 64H (b) 65H
(c) 66H (d) 67H

Ans. (c)

$$V_{in} = 1.992 \text{ V,}$$

$$n = 8,$$

$$V_{fs} = 5 \text{ V}$$

We know, from graph

$$\text{Step size} = \frac{V_{fs}}{2^n - 1}$$

$$\text{Step size} = \frac{5}{2^8 - 1} = \frac{5}{255}$$

$$\text{Analog input} = \text{Step size} \times (\text{decimal equivalent of binary code})$$

$$1.992 = \frac{5}{255} \times D$$

$$D = \frac{1.992 \times 255}{5} = (101.592)_{10}$$

For decimal equivalent of 101,

$$\text{Analog input} = \frac{5}{255} \times 101 = 1.980$$

Here 1.98 is less than 1.992 so, we have to take decimal equivalent as 102

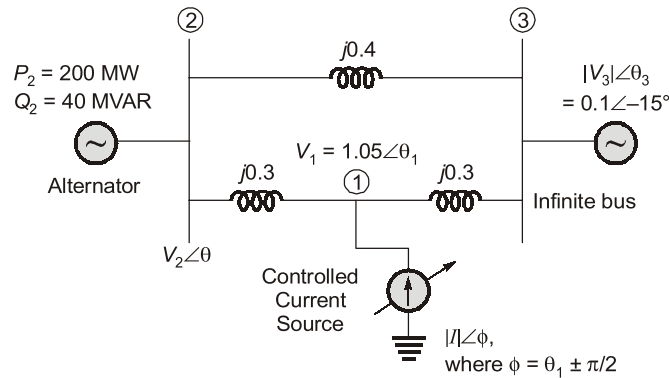
$$\text{For } (102)_{10} \text{ Analog input} = \frac{5}{255} \times 102 = 2$$

2 is near about 1.992 so, decimal equivalent will 102

In hexadecimal, $(102)_{10} = 66 \text{ H}$

End of Solution

- Q.41** The three-bus power system shown in the figure has one alternator connected to bus 2 which supplies 200 MW and 40 MVAR power. Bus 3 is infinite bus having a voltage of magnitude $|V_3| = 1.0 \text{ p.u.}$ and angle of -15° . A variable current source, $|I|\angle\phi$ is connected at bus 1 and controlled such that the magnitude of the bus 1 voltage is maintained at 1.05 p.u. and the phase angle of the source current, $\phi = \theta_1 \pm \frac{\pi}{2}$, where θ_1 is the phase angle of the bus 1 voltage. The three buses can be categorized for load flow analysis as



- | | | | |
|-----------|---------------|-----------|---------------|
| Bus 1 | Slack Bus | Bus 1 | $P - V $ Bus |
| (a) Bus 2 | $P - V $ Bus | (b) Bus 2 | $P - V $ Bus |
| Bus 3 | $P - Q$ Bus | Bus 3 | Slack Bus |
| Bus 1 | $P - Q$ Bus | Bus 1 | $P - V $ Bus |
| (c) Bus 2 | $P - Q$ Bus | (d) Bus 2 | $P - Q$ Bus |
| Bus 3 | Slack Bus | Bus 3 | Slack Bus |

Ans. (d)

At Bus (1), voltage magnitude is maintained also specified active power is zero. So, it is a PV Bus.

At Bus (2), P_G and Q_G are specified and $|V|$, δ are unknown. Hence, it is PQ Bus.

At Bus (3), $|V|$ and δ are specified. So it is slack bus.

End of Solution

Q.42 Consider the following equation in a 2-D real-space.

$$|x_1|^p + |x_2|^p = 1 \text{ for } p > 0$$

Which of the following statement(s) is/are true.

- (a) When $p = 2$, the area enclosed by the curve is π .
- (b) When p tends to ∞ , the area enclosed by the curve tends to 4.
- (c) When p tends to 0, the area enclosed by the curve is 1.
- (d) When $p = 1$, the area enclosed by the curve is 2.

Ans. (a, d)

Given space $|x_1|^p + |x_2|^p = 1$, for $P > 0$

(a) For $P = 2$,

Eqn. : $|x_1|^2 + |x_2|^2 = 1$ is a unit circle.

$$\therefore \text{Area} = \pi(1)^2 = \pi$$

\therefore It is true.

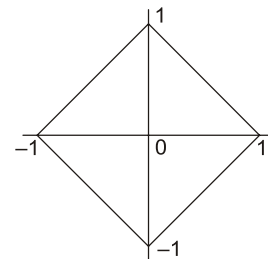
(d) For $P = 1$,

Eqn. : $|x_1| + |x_2| = 1$ is a square.

$$\begin{aligned} \text{Area of square} &= \frac{d^2}{2} \\ &= \frac{2^2}{2} = 2 \end{aligned}$$

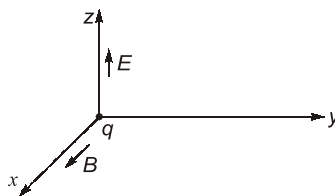
(b), (c) will not form proper curve.

\therefore (a), (d) are true options.



End of Solution

Q.43 In the figure, the electric field \mathbf{E} and the magnetic field \mathbf{B} point to x and z directions, respectively, and have constant magnitudes. A positive charge ' q ' is released from rest at the origin. Which of the following statement(s) is/are true.

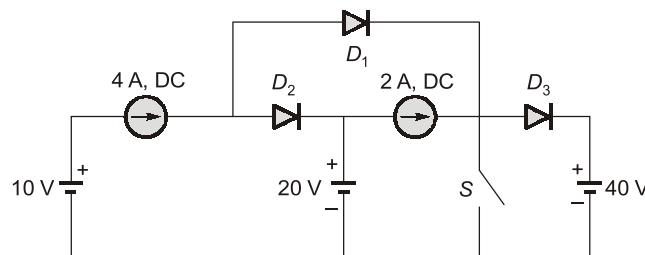


- (a) The charge will move in the direction of \mathbf{z} with constant velocity.
- (b) The charge will always move on the $\mathbf{y-z}$ plane only.
- (c) The trajectory of the charge will be a circle.
- (d) The charge will progress in the direction of \mathbf{y} .

Ans. (*)

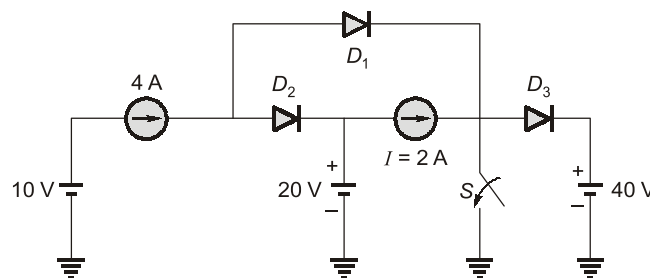
End of Solution

Q.44 All the elements in the circuit shown in the following figure are ideal. Which of the following statements is/are true?

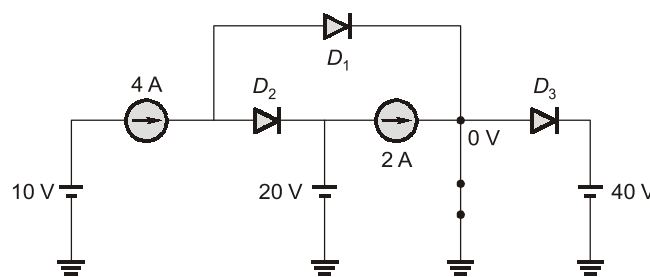


- (a) When switch S is ON, both D_1 and D_2 conducts and D_3 is reverse biased.
- (b) When switch S is ON, D_1 conducts and both D_2 and D_3 are reverse biased.
- (c) When switch S is OFF, D_1 is reverse biased and both D_2 and D_3 conduct.
- (d) When switch S is OFF, D_1 conducts, D_2 is reverse biased and D_3 conducts.

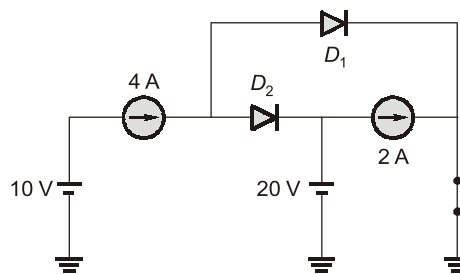
Ans. (b, c)



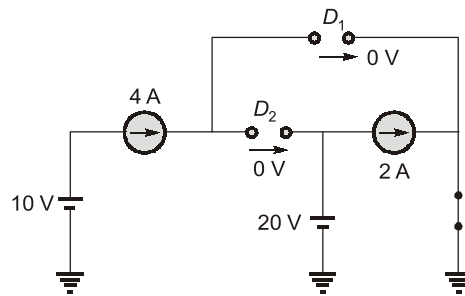
When switch on,



D_3 off by observation

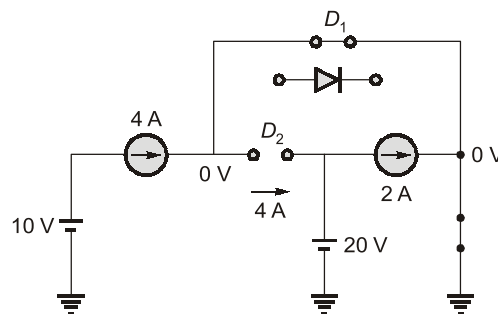


Assume D_1 and D_2 off



KCL validates not possible

Assume D_1 on, D_2 off



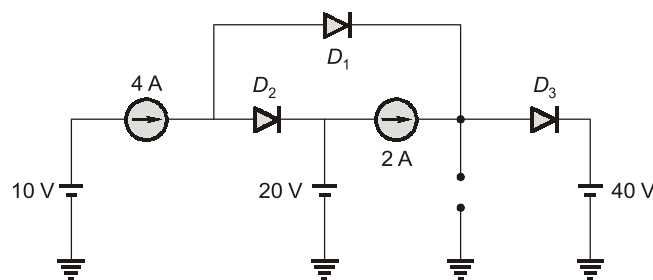
When D_1 on D_2 off

This assumption when switched:

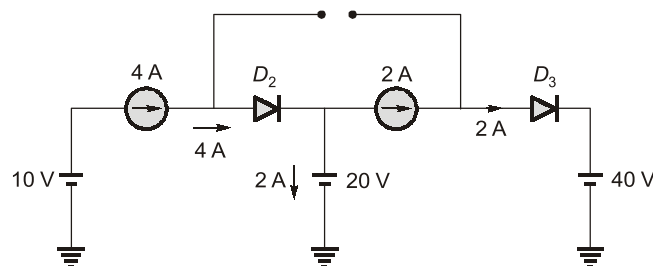
D_1 on, D_2 off, D_3 off correct

W

hen switch is off,



Assume D_1 off





Live-Online Classes for **SSC-JE 2023**

Batches are live

Validity: **Till 31st July, 2023**

**TECHNICAL &
NON-TECHNICAL
SYLLABUS**

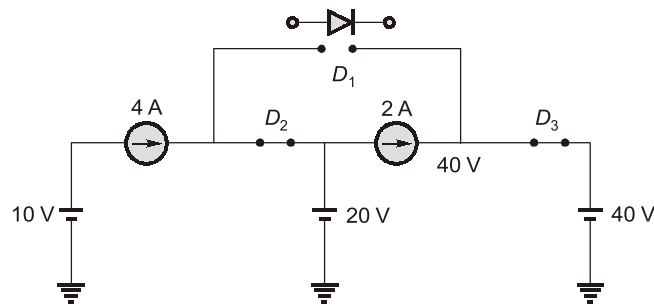
Streams :
CE, ME, EE

Course Details

CE Only Technical	ME Only Technical	EE Only Technical	Non-Tech (RA + GS)
Teaching Hrs : 650 Hrs	Teaching Hrs : 450 Hrs	Teaching Hrs : 300 Hrs	Teaching Hrs : 260 Hrs
Total No. of Books : 16	Total No. of Books : 15	Total No. of Books : 10	Total No. of Books : 03

Key Features

- ✓ Live Classes by experienced and renowned faculties having experience in SSC-JE field.
- ✓ Systematic subject sequence for Paper-I and Paper-II.
- ✓ Comprehensive coverage of Technical & Non-technical syllabus for Prelims & Mains.
- ✓ Well-researched study materials.
- ✓ Facility of watching video thrice, i.e., 1 Live session + 2 Recorded sessions.



D_1 off

Switch off : D_1 off, D_2 and D_3 on.

End of Solution

- Q.45** The expected number of trials for first occurrence of a “head” in a biased coin is known to be 4. The probability of first occurrence of a “head” in the second trial is _____ (Round off to 3 decimal places).

Ans. (0.188)

By Geometrical distribution,

$$E(x) = \frac{1}{p}$$

$$V(x) = \frac{q}{p^2}$$

$$E(x) = 4 = \frac{1}{p}$$

$$q = 1 - \frac{1}{4} = \frac{3}{4}$$

$$P(H) = \frac{1}{4},$$

$$P(T) = \frac{3}{4}$$

Required probability, $P(E) = P(T H)$

$$= \frac{3}{4} \times \frac{1}{4} = \frac{3}{16} = 0.1875$$

End of Solution

- Q.46** Consider the state-space description of an LTI system with matrices

$$A = \begin{bmatrix} 0 & 1 \\ -1 & -2 \end{bmatrix}, B = \begin{bmatrix} 0 \\ 1 \end{bmatrix}, C = [3 \quad -2], D = 1$$

For the input, $\sin(\omega t)$, $\omega > 0$, the value of ω for which the steady-state output of the system will be zero, is _____ (Round off to the nearest integer).

Ans. (2)

Given :

$$A = \begin{bmatrix} 0 & 1 \\ -1 & -2 \end{bmatrix}$$

$$B = \begin{bmatrix} 0 \\ 1 \end{bmatrix}$$

$$C = [3, -2]$$

$$D = 1$$

The transfer function

$$TF = C[sI - A]^{-1}B + D$$

$$[sI - A]^{-1} = \begin{bmatrix} s & -1 \\ 1 & s+2 \end{bmatrix}^{-1}$$

$$= \frac{1}{(s^2 + 2s + 1)} \begin{bmatrix} s+2 & 1 \\ -1 & s \end{bmatrix}$$

$$TF = \frac{1}{(s^2 + 2s + 1)} [3 \quad -2] \begin{bmatrix} s+2 & 1 \\ -1 & s \end{bmatrix} \begin{bmatrix} 0 \\ 1 \end{bmatrix} + 1$$

$$TF = \frac{1}{(s^2 + 2s + 1)} [3 \quad -2] \begin{bmatrix} 1 \\ s \end{bmatrix} + 1$$

$$TF = \frac{(3 - 2s)}{(s^2 + 2s + 1)} + 1 = \frac{s^2 + 4}{(s^2 + 2s + 1)}$$

$$H(j\omega) = \frac{4 - \omega^2}{(1 - \omega^2 + 2j\omega)}$$

The output will be zero, for $\omega^2 - 4 = 0$

$$\omega = 2 \text{ rad/sec}$$

End of Solution

Q.47 A three-phase synchronous motor with synchronous impedance of $0.1 + j0.3$ per unit per phase has a static stability limit of 2.5 per unit. The corresponding excitation voltage in per unit is _____ (Round off to 2 decimal places).

Ans. (1.6022)

Given :

$$Z_s = (0.1 + j0.3) = \sqrt{0.1^2 + 0.3^2} \angle \tan^{-1}\left(\frac{0.3}{0.1}\right)$$

$$Z = 0.3162 \angle 71.56^\circ \text{ pu}$$

The developed power will be maximum, if $\delta = \theta$

$$P_m = \frac{E_f V}{Z_s} - \frac{E_f^2}{Z_s} \cos \theta$$

$$2.5 = \frac{E_f(1)}{0.3162} - \frac{E_f^2}{0.3162} \cos(71.56)$$

$$E_f^2 - 3.162E_f + 2.5 = 0$$

$$E_f = 1.6022 \text{ pu}$$

End of Solution

Q.48 A three phase 415 V, 50 Hz, 6-pole, 960 RPM, 4 HP squirrel cage induction motor drives a constant torque load at rated speed operating from rated supply and delivering rated output. If the supply voltage and frequency are reduced by 20%, the resultant speed of the motor in RPM (neglecting the stator leakage impedance and rotational losses) is _____ (Round off to the nearest integer).

Ans. (760)

Method 1 :

$$N_s = 120 \times \frac{50}{6} = 1000 \text{ rpm}$$

⇒ Slip speed = 40 rpm

Here, $V/f = \text{Constant}$. So, slip speed remains constant.

For $f = 50 \times 0.80 = 40 \text{ Hz}$, the synchronous speed

$$N_{s2} = 120 \times \frac{40}{6}$$

$$N_{s2} = 800 \text{ rpm}$$

So, motor speed $N_2 = N_{s2} - \text{slip speed}$
 $= 800 - 40 = 760 \text{ rpm}$

Method 2 :

Torque, $T \propto \frac{sV^2}{f}$

$$\frac{T_2}{T_1} = \frac{s_2 \left(\frac{V_2}{V_1} \right)^2 \left(\frac{f_2}{f_1} \right)}{s_1 \left(\frac{V_2}{V_1} \right)^2 \left(\frac{f_2}{f_1} \right)}$$

$$1 = \frac{s_2}{0.04} (0.8)^2 \times \frac{1}{0.8}$$

$$s_2 = 0.05$$

So, $N_2 = N_{s2}(1 - s_2) = \frac{120 \times f_2}{P}(1 - s_2)$

$$N_2 = \frac{120 \times 40}{6}(1 - 0.05) = 760 \text{ rpm}$$

End of Solution

Q.49 The period of the discrete-time signal $x[n]$ described by the equation below is $N = \underline{\hspace{2cm}}$ (Round off to the nearest integer).

$$x[n] = 1 + 3 \sin\left(\frac{15\pi}{8}n + \frac{3\pi}{4}\right) - 5 \sin\left(\frac{\pi}{3}n - \frac{\pi}{4}\right)$$

Ans. (48)

$$\begin{aligned} x[n] &= 1 + 3 \sin\left(\frac{15\pi}{8}n + \frac{3\pi}{4}\right) - 5 \sin\left(\frac{\pi}{3}n - \frac{\pi}{4}\right) \\ &= 1 + 3 \sin\left(\omega_1 n + \frac{3\pi}{4}\right) - 5 \sin\left(\omega_2 n - \frac{\pi}{4}\right) \end{aligned}$$

where, $\omega_1 = \frac{15\pi}{8}, \omega_2 = \frac{\pi}{3}$

Now,
$$N_1 = \frac{2\pi}{\omega_1} K_1 = \frac{2\pi}{\frac{15\pi}{8}} K_1 = \frac{16}{15} K_1$$

$$= 16 \text{ (for } K_1 = 15)$$

$$N_2 = \frac{2\pi}{\omega_2} K_2 = \frac{2\pi}{\frac{\pi}{3}} K_2 = 6 K_2 = 6 \text{ (for } K_2 = 1)$$

Time-period of $x(n)$ is :

$$N = \text{LCM}[N_1, N_2] = \text{LCM}[16, 6] = 48$$

End of Solution

Q.50 The discrete-time Fourier transform of a signal $x[n]$ is $X(\Omega) = (1 + \cos \Omega)e^{-j\Omega}$. Consider that $x_p[n]$ is a periodic signal of period $N = 5$ such that

$$\begin{aligned} x_p[n] &= x[n], \text{ for } n = 0, 1, 2 \\ &= 0, \text{ for } n = 3, 4 \end{aligned}$$

Note that $x_p[n] = \sum_{k=0}^{N-1} a_k e^{j\frac{2\pi}{N}kn}$. The magnitude of the Fourier series coefficient a_3 is _____ (Round off to 3 decimal places).

Ans. (0.038)

Given that :

$$x(n) \Longleftrightarrow X(e^{j\Omega}) = (1 + \cos \Omega)e^{-j\Omega}$$

and $x_p(n)$ = Periodic signal $\Longleftrightarrow a_K$ = DFS-coefficient with $N = 5$

where
$$x_p(n) = \begin{cases} x(n), & \text{for } n = 0, 1, 2 \\ 0, & \text{for } n = 3, 4 \end{cases}$$

Shortcut :

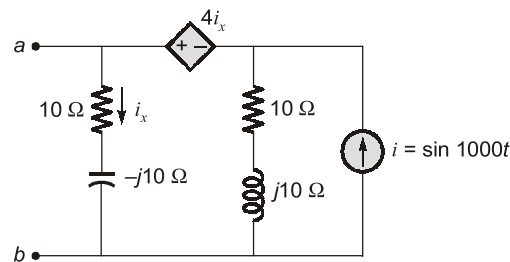
$$\begin{aligned} a_K &= \frac{X(e^{jK\Omega_0})}{N}, \text{ where } \Omega_0 = \frac{2\pi}{N} = \frac{2\pi}{5} \\ &= \frac{1}{5}(1 + \cos K\Omega_0) \cdot e^{-jK\Omega_0} \\ &= \frac{1}{5} \left[1 + \cos \frac{2\pi}{5}K \right] \cdot e^{-j\frac{2\pi}{5}K} \end{aligned}$$

Now, $|a_K| = \frac{1}{5} \left[1 + \cos \frac{2\pi}{5} K \right]$

Put $K = 3$; $|a_3| = \frac{1}{5} \left[1 + \cos \frac{6\pi}{5} \right] = \frac{1}{5} (1 - 0.809) = 0.038$

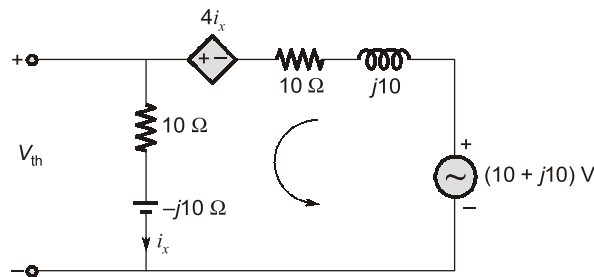
End of Solution

- Q.51** For the circuit shown, if $i = \sin 1000t$, the instantaneous value of the Thevenin's equivalent voltage (in Volts) across the terminals $a-b$ at time $t = 5$ ms is _____ (Round off to 2 decimal places).



Ans. (-11.98)

Applying source transformation



$$V_{th} = i_x(40 - j10)$$

Applying KVL

$$10 + j10 = (10 + j10)i_x - 4i_x + (10 - j10)i_x$$

$$i_x = \frac{10 + j10}{16}$$

$$V_{th} = i_x(10 - j10)$$

$$= \frac{100 + 100}{16} = 12.5 \text{ Volts}$$

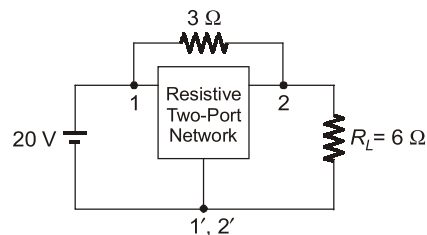
$$\begin{aligned} V_{th} &= 12.5 \sin 1000t \\ &= 12.5 \sin 1000 \times 5 \times 10^{-3} \\ &= -11.98 \text{ V} \end{aligned}$$

End of Solution

Q.52 The admittance parameters of the passive resistive two-port network shown in the figure are :

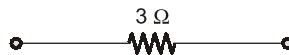
$$y_{11} = 5S, y_{22} = 1S, y_{12} = y_{21} = -2.5S$$

The power delivered to the load resistor R_L in Watt is _____ (Round off to 2 decimal places).



Ans. (238)

$$Y = [Y]_A + [Y]_B$$



$$Y_A = \begin{bmatrix} \frac{1}{3} & -\frac{1}{3} \\ -\frac{1}{3} & \frac{1}{3} \end{bmatrix}$$

$$Y_B = \begin{bmatrix} 5 & -2.5 \\ -2.5 & 1 \end{bmatrix} S$$

$$Y = \begin{bmatrix} \frac{1}{3} & -\frac{1}{3} \\ -\frac{1}{3} & \frac{1}{3} \end{bmatrix} + \begin{bmatrix} 5 & -2.5 \\ -2.5 & 1 \end{bmatrix}$$

$$= \begin{bmatrix} \frac{16}{3} & -\frac{8.5}{3} \\ -\frac{8.5}{3} & \frac{4}{3} \end{bmatrix}$$

$$I_1 = \frac{16}{3}V_1 - \frac{8.5}{3}V_2 \quad \dots(1)$$

$$I_2 = -\frac{8.5}{3}V_1 + \frac{4}{3}V_2 \quad \dots(2)$$

Put $I_2 = 0$ and $V_1 = 20V$

$$0 = -\frac{8.5}{3} \times 20 + \frac{4}{3}V_2$$

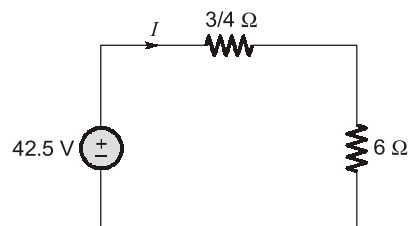
$$V_{th} = V_2 = \frac{8.5 \times 20}{4} = 42.5 \text{ V}$$

$$R_{th} = \frac{V_2}{I_2}$$

$$I_2 = \frac{4}{3} V_2$$

$$\frac{V_2}{I_2} = \frac{3}{4} \Omega$$

Equivalent circuit

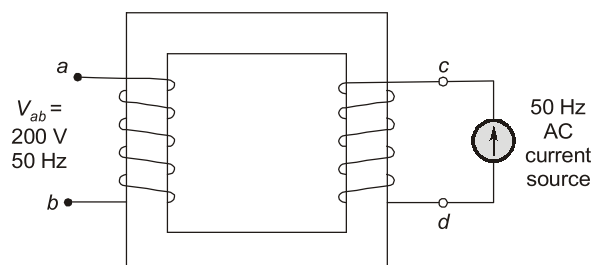


$$I = \frac{42.5}{\frac{3}{4} + 6} = 6.296 \text{ A}$$

$$P = I^2 R_L = (6.296)^2 \times 6 = 238 \text{ W}$$

End of Solution

- Q.53** When the winding $c-d$ of the single-phase, 50 Hz, two winding transformer is supplied from an AC current source of frequency 50 Hz, the rated voltage of 200 V (rms), 50 Hz is obtained at the open-circuited terminals $a-b$. The cross sectional area of the core is 5000 mm² and the average core length traversed by the mutual flux is 500 mm. The maximum allowable flux density in the core is $B_{max} = 1 \text{ Wb/m}^2$ and the relative permeability of the core material is 5000. The leakage impedance of the winding $a-b$ and winding $c-d$ at 50 Hz are $(5 + j100\pi \times 0.16) \Omega$ and $(11.25 + j100\pi \times 0.36) \Omega$, respectively. Considering the magnetizing characteristics to be linear and neglecting core loss, the self-inductance of the winding $a-b$ in millihenry is _____ (Round off to 1 decimal place).



Ans. (2058.43)

Given :

$$l = 500 \text{ mm} = 0.5 \text{ m}$$

$$A = 5000 \text{ mm}^2 = 5 \times 10^{-3} \text{ m}^2$$

$$\mu_r = 5000$$

$$E = 200 \text{ V}$$

So,

$$R = \frac{l}{\mu_0 \mu_r A} = \frac{0.5}{4\pi \times 10^{-7} \times 5000 \times 5 \times 10^{-3}} = 15915.49$$

and

$$E = 4.44 f N B_m A$$

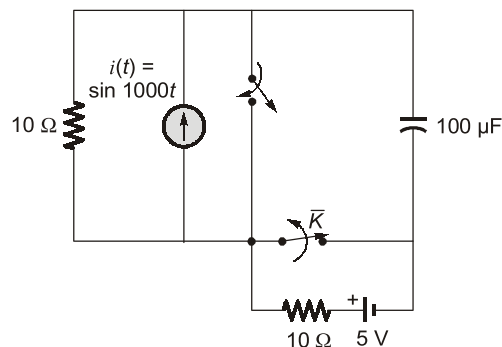
$$N = \frac{E}{4.44 f B_m A} = \frac{200}{4.44 \times 50 \times 1 \times 5 \times 10^{-3}}$$

$$N \cong 181$$

$$L = \frac{N^2}{R} = \frac{181^2}{15915.49} = 2058.43 \text{ mH}$$

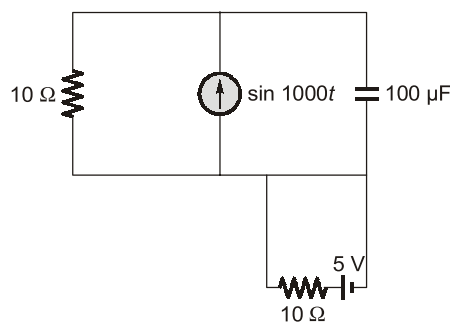
End of Solution

Q.54 The circuit shown in the figure is initially in the steady state with the switch K in open condition and \bar{K} in closed condition. The switch K is closed and \bar{K} is opened simultaneously at the instant $t = t_1$, where $t_1 > 0$. The minimum value of t_1 in milliseconds, such that there is no transient in the voltage across the $100 \mu\text{F}$ capacitor, is _____ (Round off to 2 decimal places).



Ans. (1.57)

$$t = 0^-$$



$$X_C = \frac{1}{\omega C} = \frac{1}{1000 \times 100 \times 10^{-6}} \Rightarrow 10 \Omega$$

$$V_C = 1\angle 0^\circ \times \frac{10}{10 - j10} * -j10$$

$$= \frac{(10)(-j10)}{10 - j10} \times \frac{10 + j10}{10 + j10} \Rightarrow 5 - j5$$

$$V_C = 7.07\angle -45^\circ$$

$$V_C(t) = 7.07 \sin(1000t - 45^\circ)$$

At $t = t_1$

$$V_C(t) = 7.07 \sin(1000t_1 - 45^\circ)$$

$$V_C(\infty) = 5 \text{ V}; \tau = RC \Rightarrow 10 \times 100 \times 10^{-6} \Rightarrow 10^{-3}$$

$$V_C(t) = 5 + (7.07 \sin(1000t_1 - 45^\circ) - 5)e^{-(t/10^{-3})}$$

$$V_C(t) = 5 + (7.07 \sin(1000t_1 - 45^\circ) - 5)e^{-1000(t-t_1)}$$

$$7.07 \sin(1000t_1 - 45^\circ) = 5$$

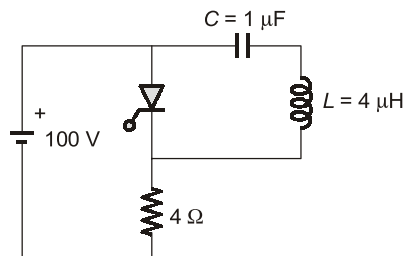
$$\sin(1000t_1 - 45^\circ) = \frac{5}{7.07}$$

$$1000t_1 - 45^\circ = 45^\circ$$

$$t_1 = 1.57 \text{ msec}$$

End of Solution

- Q.55** The circuit shown in the figure has reached steady state with thyristor 'T' in OFF condition. Assume that the latching and holding currents of the thyristor are zero. The thyristor is turned ON at $t = 0$ sec. The duration in microseconds for which the thyristor would conduct, before it turns off, is ____ (Round off to 2 decimal places).



Ans. (7.33)

Case-1 :

Steady state condition before $t = 0$ sec

The capacitor is charged already with supply voltage $V_S = 100 \text{ V}$

Case-2 :

Now thyristor T is turned on

Mode-1:



Live-Online Course for **General Studies** for **State Engineering** and **SSC Exams**

**FULL
FLEDGED
COURSE FOR
GENERAL
STUDIES**

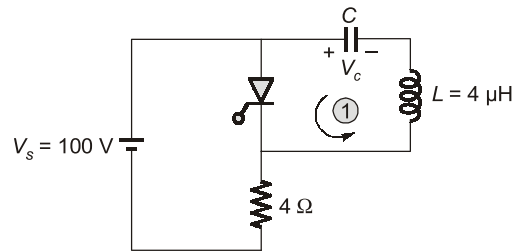
Subject Covered : History, General Science, Polity, Environment, Geography, General Knowledge, Economy & Current Affairs

Duration : 3 Months | **Validity :** 6 Months

Batches commencing from **22nd Feb, 2023**

Key Features

- ✓ 250 Hrs of quality teaching by renowned teachers of MADE EASY.
- ✓ Printed study material will be dispatched to your address.
- ✓ Comprehensive coverage as per latest syllabus and trends of various competitive exams.



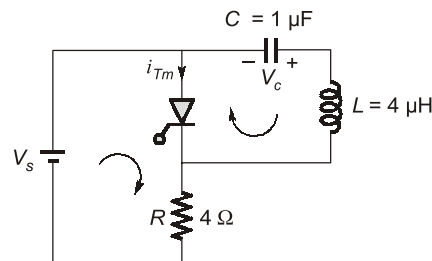
At starting $V_c = 100 \text{ V}$

The capacitor will discharge through LC circuit

at the end, $t_1 = \pi\sqrt{LC} \text{ sec}$,

the capacitor voltage will become $V_c = -100 \text{ V}$ (polarity is changed)

Mode-2:



The thyristor current, $i_{Tm} = \frac{V_s}{R} - I_p \sin \omega_0 t$

at the end,

$$I_0 = \frac{V_s}{R} - I_p \sin \omega_0 t$$

$$i_{Tm} = 0 \quad (\because T_m \rightarrow \text{off})$$

So,

$$\omega_0 t_2 = \sin^{-1} \left(\frac{I_0}{I_p} \right)$$

$$I_p = V_s \sqrt{\frac{C}{L}} = 100 \sqrt{\frac{1}{4}} = 50 \text{ A}$$

and

$$I_0 = \frac{V_s}{R} = \frac{100}{4} = 25 \text{ A}$$

So,

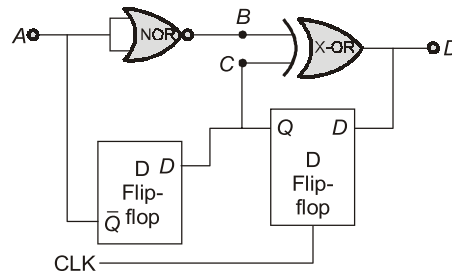
$$t_2 = \sqrt{LC} \sin^{-1} \left(\frac{25}{50} \right) = \frac{\pi}{6} \sqrt{LC}$$

So total time for conduction,

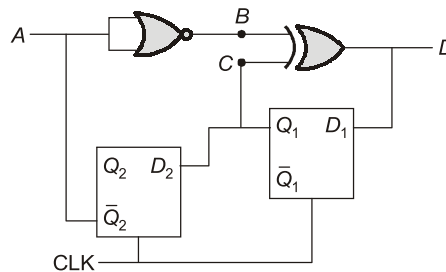
$$\begin{aligned} t_1 + t_2 &= \pi\sqrt{LC} + \frac{\pi}{6}\sqrt{LC} \\ &= \frac{7\pi}{6} \sqrt{1 \times 10^{-6} \times 4 \times 10^{-6}} \\ t_1 + t_2 &= 7.33 \text{ } \mu\text{sec} \end{aligned}$$

End of Solution

Q.56 Neglecting the delays due to the logic gates in the circuit shown in figure, the decimal equivalent of the binary sequence [ABCD] of initial logic states, which will not change with clock, is _____.



Ans. (8)



From circuit,

$$D_1 = B \oplus C = Q_2 \oplus Q_1,$$

$$D_2 = Q_1$$

Let,

$$Q_2 Q_1 = 00$$

CLK	D_2	D_1	Q_2	Q_1
			0	0
	0	0	0	0

} No change

Sequence :

ABCD

$\bar{Q}_2 Q_2 Q_1 (Q_1 \oplus Q_2)$

1000

The decimal equivalent of 1000 is $(8)_{10}$.

End of Solution

Q.57 In a given 8-bit general purpose micro-controller there are following flags.
C-Carry, A-Auxiliary Carry, O-Overflow flag, P-Parity (0 for even, 1 for odd)
R0 and R1 are the two general purpose registers of the micro-controller.
After execution of the following instructions, the decimal equivalent of the binary sequence of the flag pattern [CAOP] will be _____.

MOV R0, +0x60

MOV R1, +0x46

ADD R0, R1

Ans. (2)

MOV R_0 , 0×60 ; $R_0 \leftarrow 60 \text{ H}$

MOV R_1 , $+0 \times 46$; $R_1 \leftarrow 46 \text{ H}$

ADD R_0 , R_1 ; $R_0 \leftarrow [R_0] + [R_1]$

$$\begin{array}{r} D_4 \ D_3 \\ 0110 \ 0000 \\ 0100 \ 0110 \\ \hline 1 \\ 1010 \ 0110 \end{array}$$

$$60\text{H} + 46\text{H} = \text{A6H, i.e., } 10100110$$

Overflow (O) $\rightarrow 1$; Since if the two 8-bit data were considered as signed data then the result shows negative, i.e., Msb = 1 in A6H but both data bytes are positive.

Parity (P) \rightarrow Even, as there are 'four' binary '1's in result A6H.

$\therefore P \rightarrow 0$

For Carry Flag (C $\rightarrow 0$) No carry bit out of Mantissa.

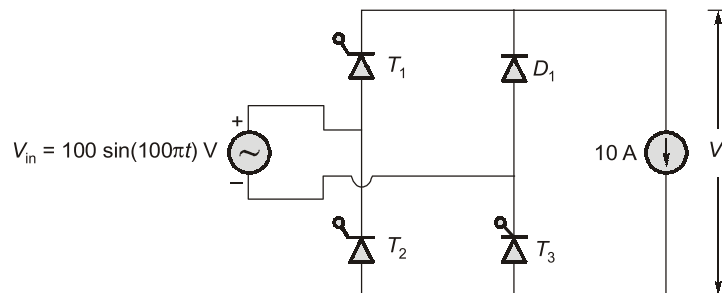
For auxiliary carry (AC $\rightarrow 0$)

No carry from D_3 to D_4 bit.

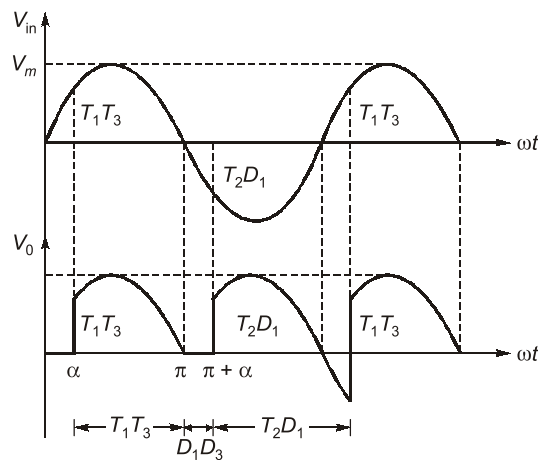
$\therefore [\text{CAOP}] \rightarrow [0010]_2 = (2)_{10}$

End of Solution

Q.58 The single phase rectifier consisting of three thyristors T_1 , T_2 , T_3 and a diode D_1 feed power to a 10 A constant current load. T_1 and T_3 are fired at $\alpha = 60^\circ$ and T_2 is fired at $\alpha = 240^\circ$. The reference for α is the positive zero crossing of V_{in} . The average voltage V_O across the load in volts is ____ (Round off to 2 decimal places).



Ans. (39.78)



The average output voltage,

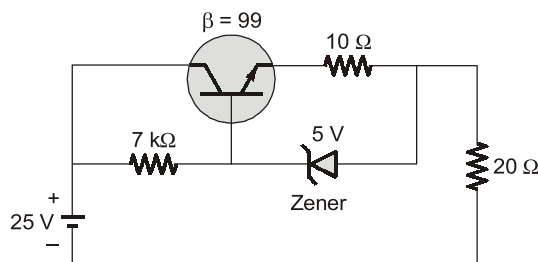
$$V_o = \frac{1}{2\pi} \left[\int_{\alpha}^{\pi} V_m \sin \omega t d(\omega t) + \int_{\pi+\alpha}^{2\pi+\alpha} -V_m \sin \omega t d(\omega t) \right]$$

$$V_o = \frac{V_m}{2\pi} [1 + 3 \cos \alpha]$$

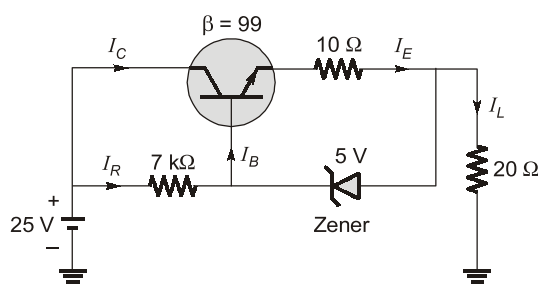
$$= \frac{100}{2\pi} [1 + 3 \cos 60^\circ] = 39.78 \text{ V}$$

End of Solution

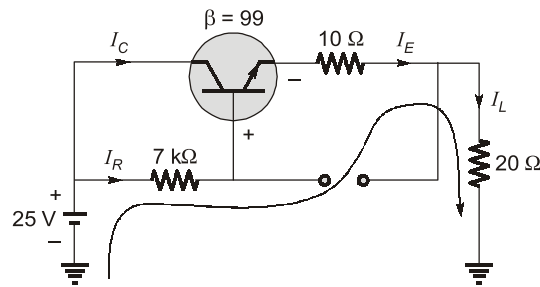
Q.59 The Zener diode in circuit has a breakdown voltage of 5 V. The current gain β of the transistor in the active region is 99. Ignore base-emitter voltage drop V_{BE} . The current through the 20Ω resistance in milliamperes is _____ (Round off to 2 decimal places).



Ans. (250)



Assume zener off



$$25 = 7K \times I_B + I_E (10\Omega + 20\Omega)$$

$$25 = 7K \times I_B + I(1 + \beta) I_B (30\Omega)$$

$$25 = 7K \times I_B + 3000\Omega \times I_B$$

$$25 = 7K \times I_B + 3K I_B$$

$$25 = 10K \times I_B$$

$$I_B = \frac{25}{10K} = 2.5 \text{ mA}$$

$$\begin{aligned} I_E &= (1 + \beta) I_B \\ &= (1 + 99) \times 2.5 \text{ mA} \\ &= 100 \times 2.5 \text{ mA} \\ &= 250 \text{ mA} \end{aligned}$$

End of Solution

- Q.60** The two-bus power system shown in figure (i) has one alternator supplying a synchronous motor load through a Y-Δ transformer. The positive, negative and zero-sequence diagrams of the system are shown in figures (ii), (iii) and (iv), respectively. All reactances in the sequence diagrams are in p.u. For a bolted line-to-line fault (fault impedance = zero) between phases 'b' and 'c' at bus 1, neglecting all pre-fault currents, the magnitude of the fault current (from phase 'b' to 'c') in p.u. is _____. (Round off to 2 decimal places).

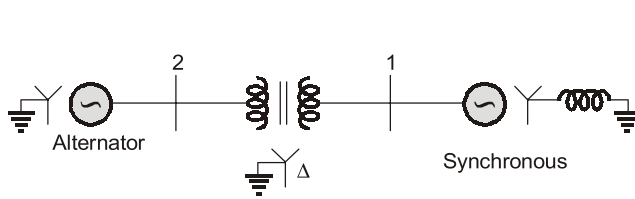


Fig. (i) : Single-line diagram of the power system

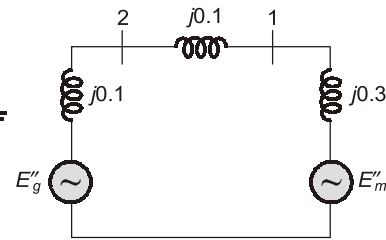


Fig. (ii) : Positive-sequence network

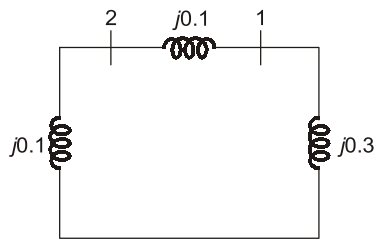


Fig. (iii) : Negative-sequence network

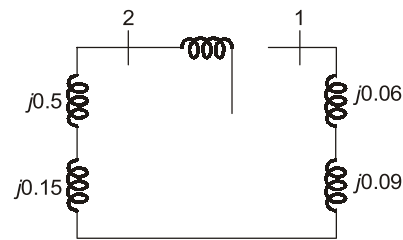


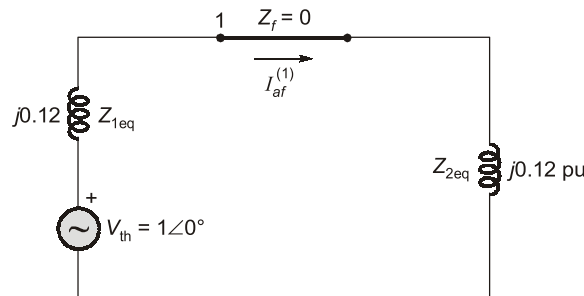
Fig. (iv) : Zero-sequence network

Ans. (7.21)

$$(Z_{1eq})_{bus 1} = j0.2 \parallel j0.3 = \frac{j0.2 \times 0.3}{0.5} = j0.12 \text{ pu}$$

$$(Z_{2eq})_{bus 1} = j0.2 \parallel j0.3 = j0.12 \text{ pu}$$

The per phase equivalent circuit for LLG fault.

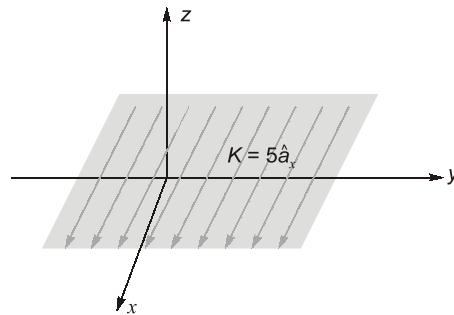


$$I_{af}^{(1)} = \frac{1\angle 0^\circ}{j0.12 + j0.12} = 4.16 \text{ pu}$$

So, fault current, $I_F = \sqrt{3} \times I_{of}^{(1)} = 7.21 \text{ pu}$

End of Solution

Q.61 An infinite surface of linear current density $\hat{K} = 5\hat{a}_x$ A/m exists on the x - y plane, as shown in the figure. The magnitude of the magnetic field intensity (**H**) at a point (1,1,1) due to the surface current in Ampere/meter is _____ (Round off to 2 decimal places).



Ans. (2.5)

Magnetic field due to sheet current is

$$\vec{H} = \frac{1}{2}(\vec{K} \times \hat{a}_n) \text{ A/m}$$

Here,

$$\vec{K} = 5\hat{a}_x$$

$$\hat{a}_n = \hat{a}_z$$

\therefore

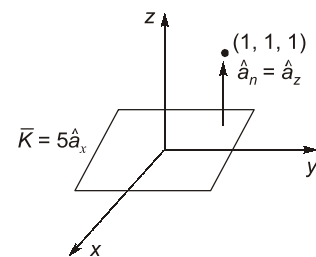
$$\vec{H} = \frac{1}{2}(5\hat{a}_x \times \hat{a}_z) = 2.5(-\hat{a}_y)$$

Here,

$$\vec{H} = -2.5\hat{a}_y \text{ A/m}$$

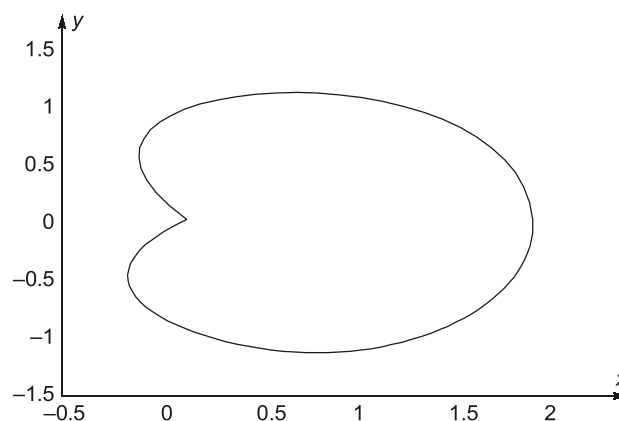
So,

$$|\vec{H}| = 2.5 \text{ A/m}$$



End of Solution

Q.62 The closed curve shown in the figure is described by $r = 1 + \cos \theta$, where $r = \sqrt{x^2 + y^2}$; $x = r \cos \theta$, $y = r \sin \theta$. The magnitude of the line integral of the vector field $\vec{F} = -y\hat{i} + x\hat{j}$ around the closed curve is _____ (Round off to 2 decimal places).



Ans. (9.42)

$$C : r = (1 + \cos \theta)$$

$$\oint_C \vec{F} \cdot d\vec{r} = \oint_C -y dx + x dy$$

By Green's Theorem

$$= 2 \iint_R dy dx$$

$$= 2[\text{Area of region bounded by curve 'C'}]$$

$$= 2 \times \frac{1}{2} \int_{\theta=0}^{2\pi} r^2 d\theta$$

$$= \int_0^{2\pi} (1 + \cos \theta)^2 d\theta$$

$$= \int_0^{2\pi} (1 + \cos^2 \theta + 2 \cos \theta) d\theta$$

$$= (\theta)_0^{2\pi} + 4 \int_0^{\pi/2} \cos^2 \theta d\theta + 4 \int_0^{\pi} \cos \theta d\theta$$

$$= 2\pi + 4 \times \frac{1}{2} \times \frac{\pi}{2} + 0$$

$$= 2\pi + \pi$$

$$= 3\pi = 3 \times 3.14$$

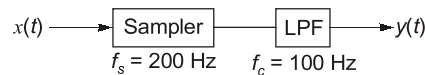
$$= 9.42$$

End of Solution

Q.63 A signal $x(t) = 2 \cos(180\pi t) \cos(60\pi t)$ is sampled at 200 Hz and then passed through an ideal low pass filter having cut-off frequency of 100 Hz. The maximum frequency present in the filtered signal in Hz is _____ (Round off to the nearest integer).

Ans. (80)

Given that :



$$x(t) = 2 \cos(180\pi t) \cos(60\pi t)$$

$$= \cos(240\pi t) + \cos(120\pi t)$$

where

$$f_1 = 120 \text{ Hz}, f_2 = 60 \text{ Hz}$$

Frequency components present at sampler output

$$: f_1, f_s \pm f_1, 2f_s \pm f_1, \dots$$

$$f_2, f_s \pm f_2, 2f_s \pm f_2, \dots$$

$$: 120, 200 \pm 120, \dots$$

$$60, 200 \pm 60, \dots$$

$$: 120, 80, 320, \dots$$

60, 140, 260,

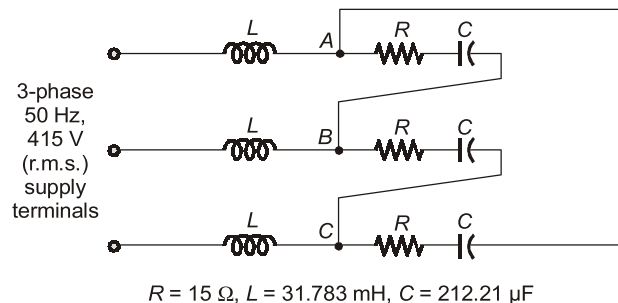
Now, LPF will pass only 60 Hz and 80 Hz because these frequencies are less than cut-off frequency 100 Hz.

i.e., LPF-output : 60 Hz, 80 Hz.

So, maximum frequency available at LPF o/p is 80 Hz.

End of Solution

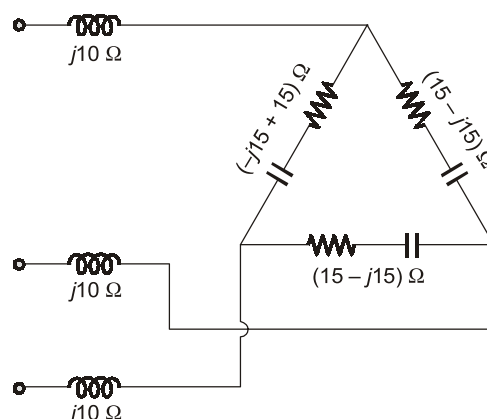
- Q.64** A balanced delta connected load consisting of the series connection of one resistor ($R = 15 \Omega$) and a capacitor ($C = 212.21 \mu\text{F}$) in each phase is connected to three-phase, 50 Hz, 415 V supply terminals through a line having an inductance of $L = 31.83 \text{ mH}$ per phase, as shown in the figure. Considering the change in the supply terminal voltage with loading to be negligible, the magnitude of the voltage across the terminals V_{AB} in Volts is _____ (Round off to the nearest integer).



Ans. (415)

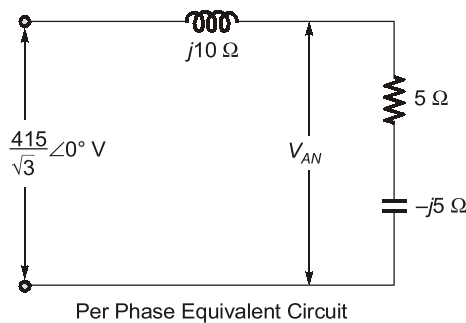
$$X_L = 2\pi fL = 2\pi \times 50 \times 31.83 \times 10^{-3} = 10 \Omega$$

$$X_C = \frac{1}{2\pi fC} = \frac{1}{2\pi \times 50 \times 212.21 \times 10^{-6}} = 15 \Omega$$



Star to delta $\Rightarrow Z_Y = \frac{Z_\Delta}{3} = \frac{15 - j15}{3} = (5 - j5) \Omega$

The per phase equivalent circuit



$$V_{AN} = \frac{(5 - j5)}{(5 - j5 + j10)} \times \frac{415}{\sqrt{3}} = \frac{(5 - j5)}{(5 + j5)} \times \frac{415}{\sqrt{3}}$$

$$|V_{AN}| = \frac{415}{\sqrt{3}} \text{ V}$$

So,

$$V_{AB} = 415 \text{ V}$$

End of Solution

Q.65 A quadratic function of two variables is given as

$$f(x_1, x_2) = x_1^2 + 2x_2^2 + 3x_1 + 3x_2 + x_1x_2 + 1$$

The magnitude of the maximum rate of change of the function at the point (1,1) is _____ (Round off to the nearest integer).

Ans. (10)

Let,

$$\phi = x_1^2 + 2x_2^2 + 3x_1 + 3x_2 + x_1x_2 + 1$$

$$\vec{\nabla}\phi = i\phi_{x_1} + j\phi_{x_2}$$

$$= i(2x_1 + 3 + x_2) + j(4x_2 + 3 + x_1)$$

$$\vec{\nabla}\phi|_{(1,1)} = 6\hat{i} + 8\hat{j}$$

$$|\vec{\nabla}\phi| = \sqrt{6^2 + 8^2} = 10$$

End of Solution

■■■■