



**MADE EASY**

India's Best Institute for IES, GATE & PSUs

# UPPSC-2019

UTTAR PRADESH PUBLIC  
SERVICE COMMISSION 2019

**Assistant Engineer**

## Mechanical Engineering PAPER-II

Exam held on 13-12-2020

Scroll down for  
Questions and Answer Keys

[www.madeeasy.in](http://www.madeeasy.in)

**Corporate Office:** 44-A/1, Kalu Sarai, New Delhi - 110016 | **Ph:** 011-45124612, 9958995830

Delhi | Hyderabad | Noida | Bhopal | Jaipur | Lucknow | Indore | Pune | Bhubaneswar | Kolkata | Patna

# UPPSC AE - 2019

**Mechanical Engineering | Assistant Engineer**

**Exam held on 13-12-2020**

**Q.1** A large tank near Mahoba, temples at Ajaygarh and Mahoba and city of Rajavasini were built by a Chandella King

- (a) Nannuk (b) Vakpati  
(c) Rahil (d) Jayashakti

**Ans. (c)**

**Q.2** Which of the following Rights a cultivator enjoyed on his own land during the Mughal period?

- (a) Right to mortgage only  
(b) Right to sell and gift  
(c) Right to mortgage and gift  
(d) All the above rights

**Ans. (c)**

**Q.3** Match **List-I** with **List-II** and select the correct answer using the code given below.

**List-I (Tribes)      List-II (States)**

- |             |                   |
|-------------|-------------------|
| (A) Tharus  | 1. Madhya Pradesh |
| (B) Todas   | 2. Jharkhand      |
| (C) Santhal | 3. Uttarakhand    |
| (D) Gond    | 4. Tamil Nadu     |

**Code:**

- |     | A | B | C | D |
|-----|---|---|---|---|
| (a) | 1 | 3 | 4 | 2 |
| (b) | 4 | 2 | 1 | 3 |
| (c) | 2 | 1 | 3 | 4 |
| (d) | 3 | 4 | 2 | 1 |

**Ans. (d)**

**Q.4** Match **List-I** with **List-II** and choose the correct answer using the code given below:

**List-I (Text)**

- (A) Kiratarjuniyam  
(B) Dashakumar Charitam  
(C) Buddha Charitam  
(D) Vikramorvashiyam

**List-II (Writer)**

1. Dandi  
2. Kalidas  
3. Bharavi  
4. Ashvaghosha

**Code:**

- |     | A | B | C | D |
|-----|---|---|---|---|
| (a) | 3 | 4 | 1 | 2 |
| (b) | 3 | 1 | 4 | 2 |
| (c) | 2 | 3 | 1 | 4 |
| (d) | 1 | 3 | 2 | 4 |

**Ans. (b)**

**Q.5** Match **List-I** with **List-II** and choose the correct answer using the code given below:

**List-I (Text)**

- (A) Nokrek  
(B) Agasthyamalai  
(C) Nandadevi  
(D) Dehang Debang

**List-II (Writer)**

1. Uttarakhand  
2. Arunachal Pradesh  
3. Kerala  
4. Meghalaya

**Code:**

- |     | A | B | C | D |
|-----|---|---|---|---|
| (a) | 4 | 3 | 1 | 2 |
| (b) | 4 | 3 | 2 | 1 |
| (c) | 3 | 4 | 1 | 2 |
| (d) | 2 | 3 | 4 | 1 |

**Ans. (a)**

**Q.6** States get share of the revenue from

- (a) Income Tax  
(b) Customs Revenue  
(c) Excise Tax  
(d) Surcharge on Income Tax

**Ans. (c)**

**Q.7** Which Article of the Indian Constitution empowers Parliament to make law for implementing international agreements?

- (a) Article 249 (b) Article 250  
(c) Article 252 (d) Article 253

**Ans. (d)**

**Q.8** Who appoints the acting Chief Justice of India?

- (a) Chief Justice of India  
(b) Chief Justice of India with previous consent of the President  
(c) President of India  
(d) President in consultation with the Chief Justice of India

**Ans. (c)**

**Q.9** The rotation intensity of Maize-Mustard-Mung crop is

- (a) 100% (b) 200%  
(c) 300% (d) 400%

**Ans. (c)**

**Q.10** Which of the following is NOT a Kharif crop?

- (a) Soyabean (b) Lentil  
(c) Cotton (d) Pigeon pea

**Ans. (b)**

**Q.11** 'Five Star Village Scheme' started by Government of India in September 2020 relates to which one of the following?

- (a) Electricity Supply  
(b) Postal Service Schemes  
(c) Health Services  
(d) Primary Education

**Ans. (b)**

**Q.12** Who won the US Open 2020, Mens Tennis Singles Title on 14th September, 2020?

- (a) Alex Zverev (b) Dominic Thiem  
(c) D. Medvedev (d) P.C. Busta

**Ans. (b)**

**Q.13** Which of the following pairs is NOT correctly matched?

**Ancient name of the cities**      **Modern name of the cities**

- (a) Esipattan – Saranath  
(b) Dashapur – Mandsor  
(c) Banvasi – Talkad  
(d) Mahoday – Kannauj

**Ans. (a)**

**Q.14** The early farming site located on the bank of lake is

- (a) Mehargarh (b) Lahuradeva  
(c) Chirand (d) T. Narsipur

**Ans. (c)**

**Q.15** Author of the 'Dastane Mazahib' which discusses about the Din-i-Ilahi of Akbar, was

- (a) Mohammad Rabbani  
(b) Mohsin Faani  
(c) Badauni  
(d) Afif

**Ans. (b)**

**Q.16** Who was appointed the Minister of 'Ministry of Rehabilitation' set up on 06 September, 1947?

- (a) S.P. Mukerji  
(b) Sardar Vallabhabhai Patel  
(c) J.L. Nehru  
(d) K.C. Niyogi

**Ans. (d)**

**Q.17** Match **List-I** with **List-II** and select the correct answer using the code given below:

| <b>List-I (States)</b> | <b>List-II (Highest Peaks)</b> |
|------------------------|--------------------------------|
| (A) Tamil Nadu         | 1. Dhoopgarh                   |
| (B) Rajasthan          | 2. Saramati                    |
| (C) Nagaland           | 3. Guru Shikhar                |
| (D) Madhya Pradesh     | 4. Doda Betta                  |

**Code:**

|     | <b>A</b> | <b>B</b> | <b>C</b> | <b>D</b> |
|-----|----------|----------|----------|----------|
| (a) | 3        | 4        | 1        | 2        |
| (b) | 1        | 2        | 4        | 3        |
| (c) | 4        | 3        | 2        | 1        |
| (d) | 2        | 1        | 3        | 4        |

**Ans. (c)**



# MADE EASY

India's Best Institute for IES, GATE & PSUs

Under the leadership of

**Mr. B. Singh**

Chairman &  
Managing Director



## LIVE CLASSES

at **MADE EASY PRIME**

EXPERIENCE  
CLASSROOM LEARNING AT HOME

### **ESE+GATE 2022 & GATE 2022**

- ✓ Live classes by India's top faculties (Fixed schedule of 3 hrs/day).
- ✓ Additional facility to watch recorded lectures with doubt clearing facility.
- ✓ Teaching pedagogy exactly similar to classroom course.
- ✓ Concept practice with workbooks and updated theory books.
- ✓ Assessment of performance through subject-wise tests.
- ✓ Systematic subject sequence and time bound completion of syllabus.

#### Evening Batch

**28<sup>th</sup> Dec, 2020**  
5.30 PM - 8.30 PM

#### Morning Batch

**18<sup>th</sup> Feb, 2021**  
8.30 AM - 11.30 AM

**EMI** Options  
available



8851176822, 9958995830



[www.madeeasyprime.com](http://www.madeeasyprime.com)

**MADE EASY** is  
*Celebrating*  
**20 Years**  
of **Excellence**



Offer valid till  
**27<sup>th</sup> Dec, 2020**

**OFFLINE CLASSES (Regular and Weekend)** commencing from **21<sup>st</sup> Feb, 2021**

If covid condition does not improve, then candidates will get access to live/online classes,  
till resumption of offline classes.

☎ 011-45124612, 9958995830



[www.madeeasy.in](http://www.madeeasy.in)

- Q.18** 'Leopold Matrix' is associated with
- (a) Weather Forecasting
  - (b) Disaster Management
  - (c) Environmental Impact Assessment Method
  - (d) Environment Law

**Ans. (c)**

- Q.19** The Joint Sitting of the Indian Parliament for transacting a legislative business is presided over by
- (a) The President of India
  - (b) The senior most Member of Parliament
  - (c) The Chairman of the Rajya Sabha
  - (d) The Speaker of the Lok Sabha

**Ans. (d)**

- Q.20** The term 'Office of Profit' has been defined by the
- (a) Constitution
  - (b) Parliament
  - (c) Supreme Court
  - (d) Union Council of Ministers

**Ans. (c)**

- Q.21** While deciding any question relating to the disqualification of a Member of Parliament, the President shall obtain the opinion of
- (a) Election Commission
  - (b) Chief Justice of India
  - (c) Attorney General
  - (d) Speaker of the Lok Sabha

**Ans. (a)**

- Q.22** Soyabean seed contains
- (a) 20% protein and 40% oil
  - (b) 40% protein and 10% oil
  - (c) 40% protein and 20% oil
  - (d) 20% protein and 20% oil

**Ans. (c)**

- Q.23** As per the results of 'Swachh Sarvekshan 2020', announced by Ministry of Housing and Urban Affairs on 20th August 2020, which is the Cleanest City in Uttar Pradesh?

- (a) Agra
- (b) Gaziabad
- (c) Lucknow
- (d) Prayagraj

**Ans. (c)**

- Q.24** How many teachers from Uttar Pradesh were selected for 'National Award' on Teachers day 5th Sept., 2020?
- (a) Six
  - (b) Five
  - (c) Four
  - (d) Three

**Ans. (d)**

- Q.25** 'Poshan Maah' was celebrated by Government of India in the year 2020, in which of the following months?
- (a) September
  - (b) August
  - (c) July
  - (d) June

**Ans. (a)**

- Q.26** A tank containing air is stirred by a paddle wheel. The work input to the paddle wheel is 6000 kJ. The heat transferred to the surroundings from the tank is 3000 kJ. The external work done by the system is
- (a) Zero
  - (b) 3000 kJ
  - (c) 6000 kJ
  - (d) 9000 kJ

**Ans. (a)**

- Q.27** If specific heat ratio for a gas is  $\gamma$ , the change in internal energy of a mass of gas at constant pressure  $P$ , when volume changes from  $V$  to  $2V$  is

- (a)  $\frac{PV}{\gamma-1}$
- (b)  $\frac{R}{\gamma-1}$
- (c)  $PV$
- (d)  $\frac{\gamma PV}{\gamma-1}$

**Ans. (a)**

- Q.28** When the depth of immersion of a plane surface is increased the centre of pressure will
- (a) come closer to centroid
  - (b) move farther away from the centroid
  - (c) will remain unchanged
  - (d) depends on the specific weight of the liquid

**Ans. (a)**

**Q.29** If a pure substance is below the triple point temperature, the solid on being heated will only

- (a) temperature remain constant
- (b) liquify
- (c) vapourize or sublimate
- (d) have its temperature increased

**Ans. (d)**

**Q.30** Velocity at a point in a pipe flow may be measured by installing

- (a) a Pitot probe at that point
- (b) a wall trap
- (c) a stagnation pressure probe at that point
- (d) a Prandtl probe at that point

**Ans. (a)**

**Q.31** A 2 kW electric resistance heater submerged in 5 kg water is turned on and kept on for 10 minutes. During the process, 300 kJ of heat is lost from the water, the temperature rise of water is

- (a) 0.4°C
- (b) 43.1°C
- (c) 57.4°C
- (d) 71.8°C

**Ans. (b)**

**Q.32** If the stream function is given by  $\psi = 3xy$ , then the velocity at point (2, 3) will be

- (a) 7.21 unit
- (b) 10.82 unit
- (c) 18 unit
- (d) 54 unit

**Ans. (b)**

**Q.33** The pressure and temperature of mixture of 4 kg  $O_2$  and 6 kg  $N_2$  are 4 bar and 27°C. What will be the value of molecular weight of mixture?

- (a) 40.67
- (b) 39.87
- (c) 29.47
- (d) None of the above

**Ans. (c)**

**Q.34** The shear stress between two fixed parallel plates with a laminar flow between them

- (a) a constant across the gap
- (b) varies parabolically as the distance from the mid plane
- (c) varies inversely as the distance from the mid plane
- (d) varies directly as the distance from the mid plane

(d) varies directly as the distance from the mid plane

**Ans. (d)**

**Q.35** A vapour while condensing at 420°C, transfers heat to water evaporating at 250°C. If ambient is at 35°C, what fraction of available energy is lost in the process?

- (a) 0.18
- (b) 0.22
- (c) 0.26
- (d) 0.30

**Ans. (c)**

**Q.36** Given power 'P' of a pump, the head 'H', the discharge 'Q' and specific weight 'w' of the liquid, dimensional analysis would lead to the result that 'P' is proportional to

- (a)  $H^{1/2} Q^2 w$
- (b)  $H^{1/2} Q w$
- (c)  $H Q^{1/2} w$
- (d)  $H Q w$

**Ans. (d)**

**Q.37** In which of the following situations, the entropy change is negative ?

- (a) Air expands isothermally from 6 bar to 3 bar
- (b) Air is compressed to half of its volume at constant pressure
- (c) Air is supplied with heat at constant volume till its pressure is doubled
- (d) Air expands adiabatically from 6 bar to 3 bar

**Ans. (b)**

**Q.38** A dimensionless group formed with the variable  $\rho$ ,  $\omega$ ,  $\mu$  and  $D$  is

- (a)  $\rho \omega \mu / D^2$
- (b)  $\rho \omega D^2 / \mu$
- (c)  $\mu D^2 \rho \omega$
- (d)  $\rho \omega \mu D$

**Ans. (b)**

**Q.39** Biot number signifies

- (a) the ratio of heat conducted to heat convected
- (b) the ratio of heat convected to heat conducted
- (c) the ratio of external convective resistance to internal conductive resistance
- (d) the ratio of internal conductive resistance to external convective resistance

**Ans. (d)**



**Q.40** The centre of pressure of a vertical rectangular plate with height of  $h$  m from its base is at

- (a)  $\frac{h}{2}$  from base    (b)  $\frac{h}{3}$  from base  
(c)  $\frac{2h}{3}$  from base    (d)  $\frac{3h}{4}$  from base

**Ans. (b)**

**Q.41** For a glass plate, transmittivity and reflectivity are specified as 0.86 and 0.08 respectively, the absorptivity of the plate is

- (a) 0.86                      (b) 0.08  
(c) 1.00                      (d) 0.06

**Ans. (d)**

**Q.42** Turbulence in a flow implies

- (a) random component of velocity superimposed on the mean flow  
(b) unsteadiness of flow  
(c) non-uniformity of flow  
(d) unsteadiness and non-uniformity of flow

**Ans. (a)**

**Q.43** In certain heat exchanger, both the fluids have identical mass flow rate-specific heat product. The hot fluid enters at  $76^\circ\text{C}$  and leaves at  $47^\circ\text{C}$  and the cold fluid entering at  $28^\circ\text{C}$  leaves at  $57^\circ\text{C}$ . The effectiveness of the heat exchanger is

- (a) 0.16                      (b) 0.60  
(c) 0.72                      (d) 1.00

**Ans. (b)**

**Q.44** An object weights 50 N in water. Its volume is 15.3 liter. Its weight when fully immersed in an oil by specific gravity 0.8 will be

- (a) 40 N                      (b) 62.5 N  
(c) 80 N                      (d) 65 N

**Ans. (c)**

**Q.45** Uniform heat generation takes place in a symmetric slab so that heat flows towards both side in contact with fluid. The zero gradient

boundary condition  $\frac{\partial T}{\partial x} = 0$ , occurs at

- (a) centre line of slab  
(b) left wall of slab  
(c) right wall of slab  
(d) nowhere in slab

**Ans. (a)**

**Q.46** Flow in a pipe takes place from

- (a) higher level to lower level  
(b) higher velocity to lower velocity  
(c) higher pressure to lower pressure  
(d) higher energy to lower energy

**Ans. (d)**

**Q.47** The shape factor of a hemispherical body placed on a flat surface with respect to itself is

- (a) zero                      (b) 0.25  
(c) 0.5                      (d) 1.0

**Ans. (c)**

**Q.48** A potential function

- (a) is constant along a streamline  
(b) is defined, if streamline function is available for the flow  
(c) describe the flow, if it is rotational  
(d) describe the flow, if it is irrotational

**Ans. (d)**

**Q.49** The average diameter of water drops from the water spray in a cooling tower is 1.5 mm. The relative velocity between the water drops and the air current may be taken as 0.9 m/s. The air and water temperatures are  $15^\circ\text{C}$  and  $80^\circ\text{C}$  respectively. Compute the convective coefficient of heat transfer.

- (a)  $165 \text{ W/m}^2\text{K}$                       (b)  $80 \text{ W/m}^2\text{K}$   
(c)  $100 \text{ W/m}^2\text{K}$                       (d)  $14.5 \text{ W/m}^2\text{K}$

**Ans. (c)**

**Q.50** Shear strain rate in a fluid is given by

- (a)  $\frac{1}{2} \left( \frac{\partial u}{\partial x} + \frac{\partial v}{\partial y} \right)$     (b)  $\frac{1}{2} \left( \frac{\partial v}{\partial x} + \frac{\partial u}{\partial y} \right)$   
(c)  $\left( \frac{\partial u}{\partial x} + \frac{\partial v}{\partial y} \right)$     (d)  $\left( \frac{\partial v}{\partial x} + \frac{\partial u}{\partial y} \right)$

**Ans. (d)**

**Q.51** In a counter flow heat exchanger, hot fluid enters at  $60^{\circ}\text{C}$  and cold fluid leaves at  $30^{\circ}\text{C}$ . Mass flow rate of the hot fluid is  $1\text{ kg/s}$  and that of the cold fluid is  $2\text{ kg/s}$ . Specific heat of the hot fluid is  $10\text{ kJ/kgK}$  and that of cold fluid is  $5\text{ kJ/kgK}$ . The Log Mean Temperature Difference (LMTD) for the heat exchanger in  $^{\circ}\text{C}$  is

- (a) 15 (b) 30  
(c) 35 (d) 45

**Ans. (b)**

**Q.52** An object weighing  $100\text{ N}$  in air was found to weight  $75\text{ N}$  when fully submerged in water. The relative density of the object is

- (a) 4.0 (b) 4.5  
(c) 2.5 (d) 1.125

**Ans. (a)**

**Q.53** For a flow over a flat plate, the hydrodynamic boundary layer thickness is  $0.5\text{ mm}$ . The fluid viscosity is  $25 \times 10^6\text{ Pa.s}$ , specific heat is  $2.0\text{ kJ/kgK}$  and thermal conductivity is  $0.05\text{ W/m.K}$ . the thermal boundary layer thickness would be

- (a)  $0.1\text{ mm}$  (b)  $0.5\text{ mm}$   
(c)  $1\text{ mm}$  (d)  $1.5\text{ mm}$

**Ans. (b)**

**Q.54** A vacuum gauge fixed on a steam condenser reads  $80\text{ kPa}$ . The barometer indicates  $1.013\text{ bar}$ . The absolute pressure in terms of mercury head

- (a)  $160\text{ mm of Hg}$  (b)  $190\text{ mm of Hg}$   
(c)  $380\text{ mm of Hg}$  (d)  $760\text{ mm of Hg}$

**Ans. (a)**

**Q.55** A wall thickness of  $0.6\text{ m}$  has nominal area  $1.5\text{ m}^2$  and is made up of material of thermal conductivity  $0.4\text{ W/mK}$ . The temperature on the two sides are  $800^{\circ}\text{C}$  and  $100^{\circ}\text{C}$ . What is the thermal resistance of the wall?

- (a)  $1\text{ W/K}$  (b)  $1.8\text{ W/K}$   
(c)  $1\text{ K/W}$  (d)  $1.8\text{ K/W}$

**Ans. (c)**

**Q.56** If the surface tension of water-air interface is  $0.073\text{ N/m}$ , the gauge pressure inside a rain

drop of  $1\text{ mm}$  diameter will be

- (a)  $0.146\text{ N/m}^2$  (b)  $73\text{ N/m}^2$   
(c)  $146\text{ N/m}^2$  (d)  $292\text{ N/m}^2$

**Ans. (d)**

**Q.57** In a counter flow heat exchanger, the product of specific heat and mass flow rate is the same for hot and cold fluids. If NTU is equal to  $0.5$ . the effectiveness of the heat exchanger is

- (a) 1.0 (b) 0.5  
(c) 0.33 (d) 0.2

**Ans. (c)**

**Q.58** A piece of wood of volume  $V$  and specific gravity  $0.87$  floats on the surface of a liquid of specific gravity  $1.31$ . The portion of the wood which is submerged in the liquid will be

- (a)  $0.335\text{ V}$  (b)  $0.665\text{ V}$   
(c)  $0.87\text{ V}$  (d)  $0.13\text{ V}$

**Ans. (b)**

**Q.59** The average Nusselt number in laminar natural convection from a vertical wall at  $180^{\circ}\text{C}$  with still air at  $20^{\circ}\text{C}$  is found to be  $48$ . If the wall temperature becomes  $30^{\circ}\text{C}$ , all other parameter remaining the same, average Nusselt number will be

- (a) 8 (b) 16  
(c) 24 (d) 32

**Ans. (c)**

**Q.60** Which one of the following is an irrotational flow?

- (a) Free vortex flow  
(b) Forced vortex flow  
(c) Couette flow  
(d) Wake flow

**Ans. (a)**

**Q.61** The efficiency of a pin fin with insulated tip is

- (a)  $\frac{\tanh mL}{mL}$  (b)  $\frac{\tanh h mL}{\sqrt{kA/kP}}$   
(c)  $\frac{mL}{\tanh mL}$  (d)  $\frac{\sqrt{hA/kP}}{\tanh mL}$

**Ans. (a)**





# MODULEWISE COURSES for ESE 2021 + GATE 2021

## Comprehensive Online Course for ESE 2021 + GATE 2021

- **GATE + ESE : CE, ME, EE, EC** • **GATE : CS, IN**
- Duration:** 4-5 week for one module.

- Comprehensive online classes by experienced and renowned faculties of MADE EASY.
- Subjects prescribed in module, covers all the topics for GATE & ESE examination.
- The course will also be immensely useful for various State Engineering and PSU Exams.
- Concept practice through workbook questions.
- Provision of books and reading references.
- Doubt clearing facility through chat window.
- Assessment of performance through tests.

| Stream | Module 1            | Module 2                    | Module 3  | Module 4   |
|--------|---------------------|-----------------------------|---|--|
| CE     | SOM + Surveying     | SOM + Irrigation            | Environmental Enggg + Fluid Mechanics   | Reasoning & Aptitude + Engineering Mathematics + General English |
| ME     | Thermo + Industrial | SOM + RAC                   | Theory of Machines + Fluid Mechanics  |  |
| EE     | Signals + Digital   | Network + Power Electronics | Power System + Control Systems  |  |
| EC     | EDC + Network       | Analog + Digital Circuits   | Communication + Control Systems   |  |
| CS     | OS + Reasoning      | DBMS + Mathematics          | Algorithm + Computer Organisation   |  |
| IN     | ----                | ----                        | Sensors and Industrial Instrumentation + Optical Instrumentation + Process Control Instrumentation<br>(Old Syllabus + New Syllabus)<br>Sensors and Industrial Instrumentation + Optical Instrumentation + Process Control Instrumentation<br>(New Syllabus) |  |

**Q.62** For the same pressure the saturation temperature of ammonia is

- (a) higher than saturation temperature of water
- (b) lower than saturation temperature of water
- (c) same as the saturation temperature of water
- (d) depends on concentration of ammonia in water

**Ans. (b)**

**Q.63** In case of turbulent flow through a horizontal isothermal cylinder of diameter 'D', free convection heat transfer coefficient for the cylinder will

- (a) be independent of diameter
- (b) vary as  $D^{3/4}$
- (c) vary as  $D^{1/4}$
- (d) vary as  $D^{1/2}$

**Ans. (a)**

**Q.64** In a vapour absorption refrigerator, the temperatures of evaporator and ambient are  $10^\circ\text{C}$  and  $30^\circ\text{C}$  respectively. If the COP of the system is 2, estimate the generator temperature

- (a)  $90^\circ\text{C}$
- (b)  $85^\circ\text{C}$
- (c)  $80^\circ\text{C}$
- (d)  $75^\circ\text{C}$

**Ans. (c)**

**Q.65** A flat plate has thickness 5 cm, thermal conductivity  $1 \text{ W/mK}$ , convective heat transfer coefficients on its two flat faces are  $10 \text{ W/m}^2\text{K}$  and  $20 \text{ W/m}^2\text{K}$ . The overall heat transfer coefficient for such a plate is

- (a)  $5 \text{ W/m}^2\text{K}$
- (b)  $6.33 \text{ W/m}^2\text{K}$
- (c)  $20 \text{ W/m}^2\text{K}$
- (d)  $30 \text{ W/m}^2\text{K}$

**Ans. (a)**

**Q.66** In an air conditioning unit air enters the cooling coil at temperature  $30^\circ\text{C}$ . The coil surface temperature is  $-10^\circ\text{C}$ . If the cooling coil bypass factor is 0.45, then the temperature at the exit will be

- (a)  $6^\circ\text{C}$
- (b)  $8^\circ\text{C}$
- (c)  $10^\circ\text{C}$
- (d)  $12^\circ\text{C}$

**Ans. (b)**

**Q.67** A solid copper ball of mass 500 gm when quenched in a water bath at  $30^\circ\text{C}$ , cools from

$530^\circ\text{C}$  to  $430^\circ\text{C}$  in 10 sec. What will be the temperature of the ball after the next 10 seconds?

- (a)  $300^\circ\text{C}$
- (b)  $320^\circ\text{C}$
- (c)  $350^\circ\text{C}$
- (d) cannot be determined

**Ans. (c)**

**Q.68** During an adiabatic saturation process of an unsaturated air, the parameters which remain constant is

- (a) Dry bulb temperature
- (b) Dew point temperature
- (c) Thermodynamic wet bulb temperature
- (d) Relative humidity

**Ans. (c)**

**Q.69** Critical radius of insulation of a hollow cylinder is

- (a)  $\frac{2k}{h}$
- (b)  $\frac{k}{2h}$
- (c)  $\frac{k}{h}$
- (d)  $\sqrt{\frac{k}{h}}$

**Ans. (c)**

**Q.70** If the volume of moist air with 50% RH is isothermally reduced to half its original volume, then relative humidity of moist air becomes

- (a) 25%
- (b) 60%
- (c) 70%
- (d) 100%

**Ans. (d)**

**Q.71** In a long cylinder rod of radius  $R$  and a surface heat flux of  $q_0$ , the uniform internal heat generation rate is

- (a)  $\frac{2q_0}{R}$
- (b)  $2q_0$
- (c)  $\frac{q_0}{R}$
- (d)  $\frac{2q_0}{R^2}$

**Ans. (a)**

**Q.72** Moist air at  $35^\circ\text{C}$  and 100% relative humidity is entering a psychrometric device and leaving at  $25^\circ\text{C}$  and 100% relative humidity.

The name of the device is

- (a) Humidifier
- (b) Dehumidifier
- (c) Sensible heater
- (d) Sensible cooler

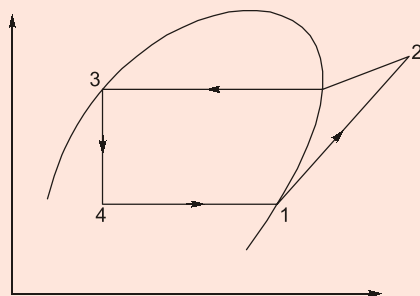
**Ans. (b)**

**Q.73** A 40 cm diameter disk with emissivity of 0.65 is placed in a large enclosure at  $30^{\circ}\text{C}$  and is effectively a black body. If the disc has a temperature of  $55^{\circ}\text{C}$ , calculate the radiosity of its upper surface

- (a)  $604 \text{ W/m}^2$  (b)  $594 \text{ W/m}^2$   
(c)  $560 \text{ W/m}^2$  (d)  $749 \text{ W/m}^2$

**Ans. (b)**

**Q.74** The vapour compression refrigeration cycle is represented as shown in the figure below. With state '1' being the exit of the evaporator. The co-ordinate system used in this figure is



- (a)  $p-h$  (b)  $T-s$   
(c)  $p-s$  (d)  $T-h$

**Ans. (d)**

**Q.75** Which of the following configuration has the highest fin effectiveness?

- (a) thin, closely spaced fins  
(b) thin, widely spaced fins  
(c) thick, widely spaced fins  
(d) thick, closely spaced fins

**Ans. (a)**

**Q.76** If the specific humidity of moist air remains same but its dry bulb temperature increases

- (a) its dew point temperature increases  
(b) its dew point temperature decreases  
(c) its dew point temperature remains same  
(d) its dew point temperature may increase or decrease depending upon increase or decrease of relative humidity

**Ans. (c)**

**Q.77** The radioactive heat transfer per unit area ( $\text{W/m}^2$ ) between two plane parallel gray surfaces (emissivity = 0.9) maintained at  $400 \text{ K}$  and  $300 \text{ K}$  is

- (a) 992 (b) 812  
(c) 464 (d) 567

**Ans. (b)**

**Q.78** Refrigerant R-717 is

- (a) Air (b) Ammonia  
(c) Carbon dioxide (d) Freon-12

**Ans. (b)**

**Q.79** Which one of the following is the effect of suction vapour superheat?

- (a) Decreases the refrigeration effect  
(b) Decreases the specific volume  
(c) Decreases the energy for compression  
(d) Increases the refrigeration effect

**Ans. (d)**

**Q.80** The room sensible heat loss is  $30000 \text{ kJ/hr}$  and the latent heat loss is  $20000 \text{ kJ/hr}$ . Then the sensible heat factor is

- (a) 0.667 (b) 0.60  
(c) 0.30 (d) 3.00

**Ans. (b)**

**Q.81** During the adiabatic cooling of moist air

- (a) dew point temperature constant  
(b) specific humidity remains constant  
(c) relative humidity remains constant  
(d) wet bulb temperature remains constant

**Ans. (d)**

**Q.82** Environment friendly refrigerant R 134a is used in the new generation domestic refrigerators. Its chemical formula is

- (a)  $\text{CHClF}_2$  (b)  $\text{C}_2\text{Cl}_3\text{F}_3$   
(c)  $\text{C}_2\text{Cl}_2\text{F}_4$  (d)  $\text{C}_2\text{H}_2\text{F}_4$

**Ans. (d)**

**Q.83** The ratio of partial pressure of water vapour ( $p_v$ ) to the saturation pressure of water vapour ( $p_s$ ) at same temperature is

- (a) relative humidity  
(b) degree of saturation  
(c) specific humidity  
(d) absolute humidity

**Ans. (a)**

**Q.84** A refrigerator working on a reversed Carnot cycle has a COP of 4. If it works as a heat pump and consumes 1 kW, the heating effect will be

- (a) 1 kW                      (b) 4 kW  
(c) 5 kW                      (d) 6 kW

**Ans. (c)**

**Q.85** An engine operating on Otto cycle has clearance volume as 10% of the swept volume. If  $\gamma = 1.4$ , the air standard cycle efficiency is

- (a) 38.3%                      (b) 39.8%  
(c) 60.2%                      (d) 61.7%

**Ans. (d)**

**Q.86** The primary factors responsible for human comfort are

- (a) dry bulb temperature, relative humidity and air motion  
(b) dry bulb temperature, dew point temperature and air motion  
(c) dry bulb temperature, relative humidity and latitude of the place  
(d) dry bulb temperature, relative humidity, air motion and elevation of the place

**Ans. (a)**

**Q.87** Knocking tendency in a SI engine reduces with increasing

- (a) engine speed  
(b) compression ratio  
(c) wall temperature  
(d) supercharging

**Ans. (a)**

**Q.88** Choose undesirable properties of a secondary refrigerants.

- (a) low freezing point  
(b) high viscosity  
(c) good stability  
(d) low vapour pressure

**Ans. (b)**

**Q.89** Chances of occurrence of cavitation are high if the

- (a) local pressure becomes very high  
(b) local temperature becomes low

(c) thoma cavitation parameter exceeds a certain limit

(d) local pressure falls below the vapour pressure

**Ans. (d)**

**Q.90** Partial pressure of water vapour at dew point temperature of moist air is  $1.5 \times 10^{-3}$  MPa. The barometric pressure is 0.1 MPa. The specific humidity of air is

- (a) 15.225 gm/kg da  
(b) 9.47 gm/kg da  
(c) 15.00 gm/kg da  
(d) 9.33 gm/kg da

**Ans. (b)**

**Q.91** If methane undergoes combustion with the stoichiometric quantity of air, the fuel-air ratio non molar basis would be

- (a) 15.22 : 1                      (b) 12.30 : 1  
(c) 14.56 : 1                      (d) 9.52 : 1

**Ans. (d)**

**Q.92** For an air-conditioned space, RTH = 100 kW, RSHF = 0.75, volume flow rate of air is 100 m<sup>3</sup>/minute and room specific humidity is 0.01 kg/kg of dry air. The specific humidity of supply air in kg/kg of dry air is

- (a) 0.0100                      (b) 0.0075  
(c) 0.0050                      (d) 0.0025

**Ans. (c)**

**Q.93** In a Rankine cycle, with the maximum steam temperature being fixed from metallurgical considerations, as the boiler pressure increases

- (a) the condenser load will increase  
(b) the quality of turbine exhaust will decrease  
(c) the quality of turbine exhaust will increase  
(d) the quality of turbine exhaust will remain unchanged

**Ans. (b)**

**Q.94** If air at dry bulb temperature of 35°C and dew point temperature of 20°C passes through air washer in which water is sprayed at 25°C, then the process would be

# ONLINE TEST SERIES



**GATE  
2021**

**54 Tests**  
1782 Questions

## Graduate Aptitude Test in Engineering

**Streams:** CE, ME, EE, EC, CS, IN, PI

- On Revised syllabus of GATE 2021.
- Newly introduced MSQs questions added.
- Quality questions as per standard and pattern of GATE.
- Fully explained and well illustrated solutions.
- Due care taken for accuracy.
- Comprehensive performance analysis report.

**Combined Package of GATE 2020 + GATE 2021 also available (108 Tests)**

**ESE 2021  
Prelims**

**34 Tests**  
2206 Questions

## Engineering Services Examination 2021

### Preliminary Examination

**Streams:** CE, ME, EE, E&T

- Quality questions as per standard and pattern of ESE.
- Includes tests of Paper-I (GS & Engg. Aptitude) and Paper-II (Technical)
- Fully explained and well illustrated solutions.
- Due care taken for accuracy.
- Comprehensive performance analysis report.

**Combined Package of ESE 2020 + ESE 2021 Pre also available (68 Tests)**



- (a) sensible cooling
- (b) cooling and dehumidification
- (c) cooling and humidification
- (d) cooling at constant dew point temperature

Ans. (c)

**Q.95** The work ratio in a gas turbine plant is equal to where

$r_p$  = pressure ratio

$T_1$  = compressor inlet temperature

$T_3$  = turbine inlet temperature

- (a)  $1 - r_p^{\frac{\gamma-1}{\gamma}}$
- (b)  $1 - \frac{T_1}{T_3} r_p^{\frac{\gamma-1}{\gamma}}$
- (c)  $1 + \frac{T_1}{T_2} r_p^{\frac{\gamma-1}{\gamma}}$
- (d)  $1 + r_p^{\frac{\gamma-1}{\gamma}}$

Ans. (b)

**Q.96** The velocity distribution in the boundary layer is

given by  $\frac{u}{U} = \frac{y}{\delta}$ , where  $u$  is the velocity at a distance  $y$  from the plate and  $u = U$  at  $y = \delta$ ,  $\delta$  being boundary layer thickness. The displacement thickness is given by

- (a)  $\delta$
- (b)  $\frac{\delta}{2}$
- (c)  $\frac{\delta}{3}$
- (d)  $\frac{2\delta}{3}$

Ans. (b)

**Q.97** A four stroke engine having a brake power of 105 kW is supplied with a fuel at a rate of 4.4 per 10 minutes. The brake specific fuel consumption of the engine is

- (a) 0.18 kg/kW-hr
- (b) 0.25 kg/kW-hr
- (c) 0.36 kg/kW-hr
- (d) 0.42 kg/kW-hr

Ans. (b)

**Q.98** A circular plate of diameter 1.6 m is placed vertically in water in such a way that the centre of the plate is 2.5 m below the free surface of the water. The location of the centre pressure is

- (a) 2.564 m
- (b) 2.5 m
- (c) 2.864 m
- (d) 2.654 m

Ans. (a)

**Q.99** Which of the following are effects of nozzle friction?

- 1. Enthalpy drop decreases
- 2. Exit velocity reduces
- 3. Decrease in specific volume
- 4. Decrease in mass flow rate

Select correct code.

- (a) (1), (2) and (3)
- (b) (2), (3) and (4)
- (c) (1), (3) and (4)
- (d) (1), (2) and (4)

Ans. (d)

**Q.100** For a heat engine operating on a Carnot cycle, the work output is  $1/4^{\text{th}}$  of the heat rejected to the sink. The thermal efficiency of the engine would be

- (a) 10%
- (b) 20%
- (c) 30%
- (d) 50%

Ans. (b)

**Q.101** The quality of vapour at the exit of nozzle \_\_\_\_\_ due to nozzle friction

- (a) increases
- (b) decreases
- (c) does not change
- (d) unpredictable

Ans. (a)

**Q.102** An ideal gas of mass  $m$  and temperature  $T_1$  undergoes a reversible isothermal process from an initial pressure  $P_1$  to final pressure  $P_2$ . The heat loss during the process is  $Q$ . The entropy change  $\Delta S$  of the gas is

- (a)  $mR \ln \left( \frac{P_2}{P_1} \right)$
- (b)  $mR \ln \left( \frac{P_1}{P_2} \right)$
- (c)  $mR \ln \left( \frac{P_2}{P_1} \right) - \frac{Q}{T_1}$
- (d) zero

Ans. (b)



**Q.103** Which one is NOT a reason behind the fact that the ideal regenerative cycle is practically not possible?

- (a) The reversible heat transfer takes infinite time
- (b) It is mechanically impossible to exchange heat in the turbine
- (c) The moisture content in the turbine will be high
- (d) The steam specific volume will be too high

**Ans. (d)**

**Q.104** What will be the loss of available energy associated with the transfer of 1000 kJ of heat from constant temperature system at 600 K to another system at temperature 400 K, when the environment is 300 K?

- (a) 150 kJ                      (b) 250 kJ
- (c) 500 kJ                    (d) 700 kJ

**Ans. (b)**

**Q.105** An ideal closed cycle gas turbine plant working between temperatures 927°C and 27°C using air as working fluid. The pressure ratio for maximum work output is

- (a) 11.3                      (b) 13.3
- (c) 15.3                    (d) 17.3

**Ans. (a)**

**Q.106** Consider the following properties:

- 1. Energy                      2. Entropy
- 3. Gibbs energy              4. Volume
- 5. Pressure                    6. Temperature
- 7. Viscosity                   8. Elasticity

Which of the above are intensive properties?

- (a) 1, 3, 5, 6                (b) 5, 6, 7, 8
- (c) 1, 3, 5, 6, 7, 8        (d) 4, 5, 6, 8

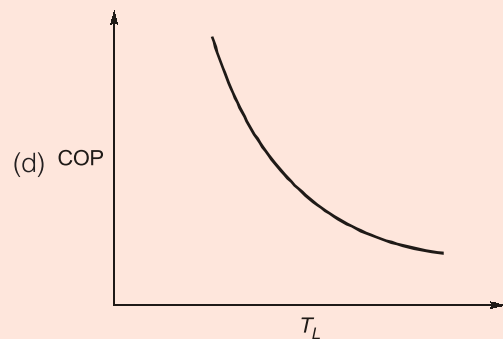
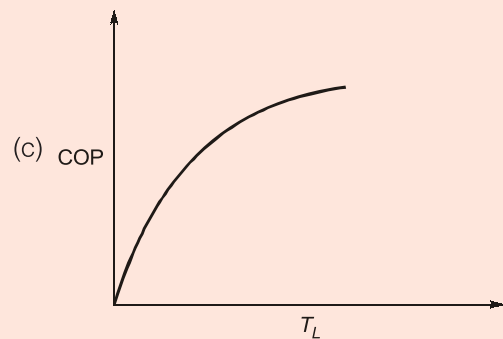
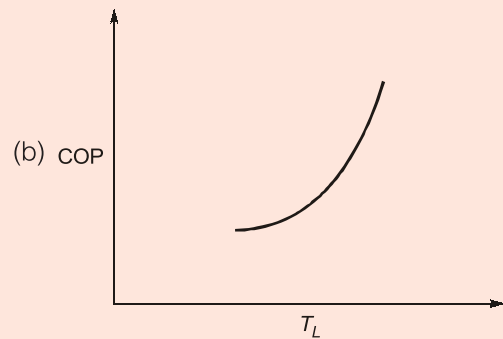
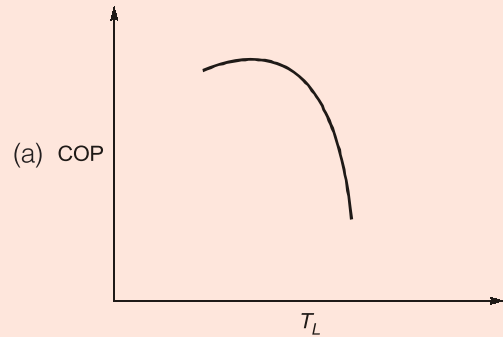
**Ans. (b)**

**Q.107** Air is drawn in a compressor at the rate of 0.8 kg/s at a pressure of 1 bar and temperature of 20°C. Delivering temperature is 90°C and pressure is 10 bar. The air is delivered through an area of  $2 \times 10^{-3} \text{ m}^2$ . If  $R = 287 \text{ J/kgK}$ , the air exit velocity is

- (a) 41.7 m/s                (b) 35.8 m/s
- (c) 29.7 m/s                (d) 27.3 m/s

**Ans. (a)**

**Q.108** For a given value of  $T_H$  (source temperature) for a reversed Carnot cycle, the variation of  $T_L$  (sink temperature) for different values of COP is represented by which one of the following graphs?



**Ans. (b)**

**Q.109** Mach angle  $\alpha$  and Mach number  $M$  are related as

(a)  $M = \sin^{-1}\left(\frac{1}{\alpha}\right)$

(b)  $\alpha = \cos^{-1}\left(\sqrt{\frac{M^2 - 1}{M^2}}\right)$

(c)  $\tan \alpha = (\sqrt{M^2 - 1})$

(d)  $\alpha = \operatorname{cosec}^{-1}\left(\frac{1}{M}\right)$

**Ans. (b)**

**Q.110** In the polytropic process, equation  $PV^n = \text{constant}$ , if  $n$  is infinitely large, the process is termed as

- (a) Constant pressure process
- (b) Constant volume process
- (c) Adiabatic process
- (d) Isothermal process

**Ans. (b)**

**Q.111** Biogas is predominantly

- (a) Hydrogen
- (b) Carbon monoxide
- (c) Carbon dioxide
- (d) Methane

**Ans. (d)**

**Q.112** Change in enthalpy in a closed system is equal to heat transferred if the reversible process takes place at constant

- (a) temperature
- (b) internal energy
- (c) pressure
- (d) entropy

**Ans. (c)**

**Q.113** In a Rankine cycle, regeneration results in higher efficiency because

- (a) pressure inside the boiler increases
- (b) heat is added before steam enters the low pressure turbine

(c) average temperature of heat addition in the boiler increases

(d) total work delivered by the turbine increases

**Ans. (c)**

**Q.114** The value of compressibility factor,  $Z$  at the critical state of a Van der Waal's gas is

- (a) 3.735
- (b) 0.735
- (c) 3.375
- (d) 0.375

**Ans. (d)**

**Q.115** A diesel engine is usually more efficient than a spark ignition engine because

- (a) diesel being a heavier hydrocarbon, releases more heat per kg than gasoline
- (b) the air standard efficiency of diesel cycle is higher than the Otto cycle, at a fixed compression ratio
- (c) the compression ratio of a diesel engine is higher than that of an spark ignition engine
- (d) Self ignition temperature of diesel is higher than that of gasoline

**Ans. (c)**

**Q.116** A perfect gas having  $P_1 = 0.1 \text{ N/mm}^2$ ,

$V_1 = 0.18 \text{ m}^3$ ,  $T_1 = 20^\circ\text{C}$  is compressed to  $\frac{1}{10}$

of its volume in an isothermal process. The change in entropy is

- (a)  $-141.45 \text{ J/K}$
- (b)  $141.45 \text{ J/K}$
- (c)  $-4144.23 \text{ J/K}$
- (d) Zero

**Ans. (a)**

**Q.117** If  $\eta_1$  and  $\eta_2$  are the thermal efficiencies of two individual power plants. When they are coupled in series, the overall thermal efficiency  $\eta_0$  of the combined plant is given by

- (a)  $\eta_0 = \eta_1 \eta_2$
- (b)  $\eta_0 = \eta_1 + \eta_2$
- (c)  $\eta_0 = \eta_1 + \eta_2 - \eta_1 \eta_2$
- (d)  $\eta_0 = \frac{\eta_1 + \eta_2}{\eta_1 \eta_2}$

**Ans. (c)**



**MADE EASY**

India's Best Institute for IES, GATE & PSUs

Exclusive Package

**12** **Full Syllabus Tests**

**GATE 2021**  
**Online Test Series**

Stream: CE, ME, EE, EC, CS, IN, PI

**Rs. 500/-** +GST

- ✓ As per revised pattern and syllabus of GATE 2021.
- ✓ Fully explained and well illustrated solutions.
- ✓ Facility of asking your doubt with experts.

**Click to enroll**



**[www.onlinetestseriesmadeeasy.in](http://www.onlinetestseriesmadeeasy.in)**

- Q.118** A substance whose Joule-Thomson coefficient is negative, is throttled to a lower pressure. During this process
- (a) the entropy of the substance will decrease
  - (b) the entropy of the substance will remain constant
  - (c) the temperature of the substance will decrease
  - (d) the temperature of the substance will increase

**Ans. (d)**

- Q.119** Decrease of air-fuel ratio in spark ignition engines results in
- (a) increase of  $\text{NO}_x$
  - (b) a decrease of CO and unburnt hydrocarbon
  - (c) an increase of CO and unburnt hydrocarbon
  - (d) none of the above

**Ans. (c)**

- Q.120** A mass of 5 kg of water at 293 K is turned completely to ice at 273 K. The entropy change in the process is
- (a) 6.13479 kJ/K
  - (b) -1.4847 kJ/K
  - (c) -7.6195 kJ/K
  - (d) 8.3195 kJ/K

**Ans. (c)**

- Q.121** A centrifugal pump driven by a directly coupled 3 kW motor of 1450 rpm speed, is proposed to be connected to a motor of 2900 rpm speed. The power of the motor should be
- (a) 6 kW
  - (b) 12 kW
  - (c) 18 kW
  - (d) 24 kW

**Ans. (d)**

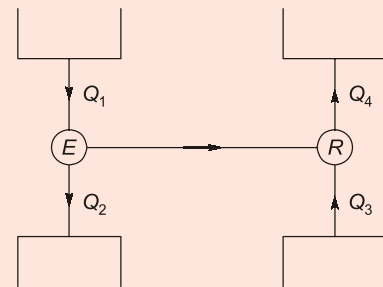
- Q.122** One reversible heat engine operates between 1000 K and T K and another reversible heat engine operates between T K and 400 K. If both heat engines have same heat input and output, the value of T is
- (a) 582.7 K
  - (b) 632.5 K
  - (c) 682.8 K
  - (d) 732.5 K

**Ans. (b)**

- Q.123** The pressure at a point is equal in all directions
- (a) only when the fluid is inviscid
  - (b) when the fluid is incompressible
  - (c) when the fluid is at rest
  - (d) in a laminar flow

**Ans. (c)**

- Q.124** In the figure shown below, 'E' is the heat engine with efficiency of 0.4 and 'R' is the refrigerator, if  $Q_2 + Q_4 = 3Q_1$ , the COP of the refrigerator will be



- (a) 3.0
- (b) 4.5
- (c) 5.0
- (d) 5.5

**Ans. (c)**

- Q.125** An automobile moving at a velocity of 40 km/hr is experiencing a wind resistance of 2 kN. If the automobile is moving at a velocity of 50 km/hr, the power required to overcome the wind resistance is
- (a) 43.4 kW
  - (b) 3.125 kW
  - (c) 2.5 kW
  - (d) 27.776 kW

**Ans. (a)**

