

# Civil Engineering

## Structural Analysis

Comprehensive Theory

*with* Solved Examples and Practice Questions



**MADE EASY**  
Publications



## **MADE EASY Publications**

Corporate Office: 44-A/4, Kalu Sarai (Near Hauz Khas Metro Station), New Delhi-110016

E-mail: [infomep@madeeasy.in](mailto:infomep@madeeasy.in)

Contact: 011-45124660, 8860378007

Visit us at: [www.madeeasypublications.org](http://www.madeeasypublications.org)

## **Structural Analysis**

© Copyright, by MADE EASY Publications.

All rights are reserved. No part of this publication may be reproduced, stored in or introduced into a retrieval system, or transmitted in any form or by any means (electronic, mechanical, photo-copying, recording or otherwise), without the prior written permission of the above mentioned publisher of this book.

**Edition: 2020**

# Contents

## Structural Analysis

### Chapter 1

#### Stability and Indeterminacy ..... 1

1.1 Support System .....	1
1.1.1 2-D Supports .....	1
1.1.2 2-D Internal Joints .....	2
1.1.3 3-D Supports .....	3
1.2 Structure.....	4
1.2.1 Elements of Structure.....	4
1.2.2 Types of Structures.....	5
1.3 Types of Loading .....	6
1.4 Stability of Structures .....	7
1.4.1 External Stability .....	7
1.4.2 Internal Stability .....	9
1.4.3 Overall Stability .....	11
1.5 Statically Determinate and Indeterminate Structures.....	12
1.5.1 Statically Determinate Structures .....	12
1.5.2 Statically Indeterminate Structures.....	12
1.6 Degree of Indeterminacy .....	12
1.6.1 Static Indeterminacy .....	12
1.6.2 Degree of Kinematic Indeterminacy.....	24
<i>Objective Brain Teasers</i> .....	<b>29</b>

### Chapter 2

#### Influence Line Diagram and Rolling Loads ..... 36

2.1 Introduction .....	36
2.2 Influence Line Diagram.....	36
2.2.1 Influence Line for Determinate Structure .....	36
2.3 Muller Breslau's Principle.....	48

2.4 Application of ILD .....	49
2.5 Effect of Rolling Loads .....	55
2.5.1 Single Point Load .....	55
2.5.2 Uniformly Distributed Load Longer than the Span.....	56
2.5.3 Uniformly Distributed Load Smaller than the Span.....	59
2.5.4 Series of Point Load.....	67
2.6 Influence Line Diagram for Statically Indeterminate Beams.....	70
<i>Objective Brain Teasers</i> .....	79
<i>Conventional Practice Questions</i> .....	83

### Chapter 3

#### Trusses ..... 84

3.1 Introduction .....	84
3.2 Classification of Trusses.....	84
3.3 Stability of Trusses .....	85
3.4 Determinate and Indeterminate Trusses .....	86
3.5 Methods of Analysis of Determinate Truss .....	86
3.5.1 Method of Joints .....	86
3.5.2 Method of Sections.....	95
3.6 Methods of Analysis of Indeterminate Truss .....	100
3.6.1 Unit Load Method.....	100
3.6.2 Stiffness Method .....	121
3.7 Deflection of Truss Joints.....	123
3.7.1 Maxwell's Method/Unit Load Method .....	123
3.8 Influence Line Diagram for Trusses.....	133
<i>Objective Brain Teasers</i> .....	140
<i>Conventional Practice Questions</i> .....	145

## Chapter 4

### Arches .....146

4.1	Introduction .....	146
4.2	Comparison between Cable and Arch .....	146
4.3	Comparison between the behaviour of Arch and Beam.....	147
4.3.1	Advantages of Arch over Beam .....	147
4.3.2	Disadvantages of Arch over Beam.....	148
4.4	Analysis of Three-Hinged Arches.....	148
4.4.1	Three Hinge Parabolic Arch Subjected to UDL over Entire Span .....	148
4.4.2	Three Hinge Semi-circular Arch Subjected to UDL over Entire Span .....	149
4.4.3	Three Hinge Semi-circular Arch Subjected to Concentrated Load at Crown .....	150
4.4.4	Three Hinged Parabolic Arch with Abutments at Different Heights Subjected to UDL over Entire Span .....	155
4.4.5	Temperature Effect on Three Hinged Arches...	160
4.5	Two Hinges Arches .....	161
4.5.1	Two Hinged Semi-circular Arch Subjected to Concentrated Load at Crown .....	161
4.5.2	Two Hinged Semi-circular Arch Subjected to UDL over Entire Span .....	162
4.5.3	Two Hinge Parabolic Arch Subjected to UDL over Entire Span .....	163
4.5.4	Two Hinged Parabolic Arch Subjected to Concentrated Load at Crown .....	164
4.5.5	Temperature Effect on Two Hinged Arches.....	164
4.5.6	Reaction Locus for a Two Hinged Arch .....	165
4.6	The Linear Arch or Theoretical Arch .....	166
4.7	Influence Line Diagrams for Three Hinged Arches ....	166
4.7.1	ILD for Horizontal Thrust .....	166
4.7.2	ILD for Bending Moment .....	167
4.7.3	ILD for Radial Shear .....	167
4.7.4	ILD for Normal Thrust .....	168
4.8	Influence for Two Hinged Arches .....	168
4.8.1	ILD for Horizontal Thrust .....	168
4.8.2	ILD for Bending Moment .....	168

4.8.3	ILD for Radial Shear .....	169
4.8.4	ILD for Normal Thrust .....	169
	<i>Objective Brain Teasers</i> .....	170
	<i>Conventional Practice Questions</i> .....	174

## Chapter 5

### External Equilibrium of Structures ....176

5.1	Equations of Equilibrium.....	176
5.2	Free Body Diagram .....	176
	<i>Objective Brain Teasers</i> .....	183

## Chapter 6

### Methods of Indeterminate Analysis : Basic Methods .....186

6.1	Introduction .....	186
6.2	Castigliano's Theorem.....	187
6.2.1	Castigliano's First Theorem.....	187
6.2.2	Castigliano's Second Theorem .....	187
6.3	Principle of Minimum Potential Energy .....	188
6.4	Betti's Law .....	188
6.5	Maxwell's Reciprocal Theorem .....	191
6.6	Principle of Virtual Work.....	192
6.7	Principle of Superposition .....	193
6.8	Consistent Deformation of Method .....	193
6.8.1	Procedure of Analysis by Consistent Deformation Method .....	199
6.9	Three Moment Equation .....	222
6.9.1	Application of Three Moment Equation to Continuous Beams with Fixed Ends.....	226
6.9.2	Application of Three Moment Equation to Continuous Beam with Support at Different Level..	228
	<i>Objective Brain Teasers</i> .....	236
	<i>Conventional Practice Questions</i> .....	238

## Chapter 7

### Energy Methods of Analysis .....240

7.1	Application of Minimum Potential Energy .....	240
7.2	Algorithm for Analysis .....	240

7.3 Unit Load Method.....	249
7.3.1 Algorithm to Find Slope/Deflection.....	250
<i>Objective Brain Teasers</i> .....	265
<i>Conventional Practice Questions</i> .....	268

## Chapter 8

### Moment Distribution Method of Analysis..... 269

8.1 Introduction.....	269
8.2 Stiffness.....	269
8.3 Carry over Factors.....	271
8.4 Distribution Theorem.....	274
8.5 Distribution Factor.....	274
8.6 Fixed End Moments.....	277
8.6.1 Standard Results of Fixed End Moments.....	278
8.7 Bending Moment Diagram Using Stiffness Approach.....	282
8.8 Procedure of Analysis by Moment Distribution Method.....	284
8.9 Sway Analysis.....	301
8.9.1 Frames without Sway.....	301
8.9.2 Frames with Sway.....	301
8.9.3 Beam Sway (Joint Displacement).....	302
8.9.4 Procedure of Sway Analysis.....	305
8.9.5 Sway Analysis of Non-prismatic Beams.....	325
8.9.6 Sway of Skew Frames.....	331
<i>Objective Brain Teasers</i> .....	336
<i>Conventional Practice Questions</i> .....	343

## Chapter 9

### Slope Deflection Method of Analysis.345

9.1 Introduction.....	345
9.2 Sign Convention.....	345
9.3 Derivation of Slope Deflection Equations.....	346
9.4 Procedure of Analysis.....	347
9.5 Analysis of Frames without Sway.....	361
9.6 Analysis of Frames with Sway.....	370
9.7 Beam Sway (Joint Displacement).....	380
<i>Objective Brain Teasers</i> .....	389
<i>Conventional Practice Questions</i> .....	391

## Chapter 10

### Matrix Methods of Analysis .....393

10.1 Algebra of Matrices.....	393
10.2 Types of Matrices.....	393
10.3 Matrices Operations.....	394
10.4 Standard Results of Slope and Deflection.....	399
10.5 Flexibility and Stiffness.....	400
10.6 Flexibility Matrix.....	400
10.6.1 Properties.....	400
10.6.2 Procedure to Develop Flexibility Matrix.....	400
10.7 Stiffness Matrix.....	408
10.7.1 Properties.....	408
10.7.2 Procedure to Develop Stiffness Matrix.....	408
10.7.3 Standard Results for Stiffness.....	410
10.8 Analysis of Beam and Frame Using Flexibility Matrix Method.....	415
10.8.1 Degree of Static Indeterminacy.....	415
10.8.2 Basic Released Structure.....	415
10.9 Analysis of Beam and Frame Using Stiffness Matrix Method.....	426
<i>Objective Brain Teasers</i> .....	444
<i>Conventional Practice Questions</i> .....	447

## Chapter 11

### Structural Dynamics .....449

#### A. Undamped Free Vibration of Single Degree of Freedom Systems

11.1 Degree of Freedom.....	449
11.2 Undamped System.....	450
11.3 Springs in Parallel or in Series.....	450
11.4 Free Body Diagram.....	450
11.5 D'Alembert's Principle.....	451
11.6 Solution of Differential Equation of Motion.....	451
11.7 Frequency and Period.....	452
11.8 Amplitude of Motion.....	452

<b>B. Damped Single-degree-of-freedom Systems</b>	
11.9	Viscous Damping ..... 457
11.10	Equation of Motion ..... 457
11.11	Critically Damped System ..... 458
11.12	Overdamped System ..... 459
11.13	Underdamped System ..... 459
11.14	Logarithmic Decrement ..... 461
<b>C. Response of One-degree-of-freedom System to Harmonic Loading</b>	
11.15	Undamped Harmonic Excitation ..... 463
11.16	Damped Harmonic Excitation ..... 465
11.17	Transmissibility of Force ..... 470
<b>D. Response of One-degree Freedom of System to Forced General Dynamic Loading</b>	
11.18	Impulsive Loading and Duhamel's Integral ..... 473
11.19	Constant Force ..... 474
11.20	Rectangular Load ..... 474
<b>E. Fourier Analysis and Response in the Frequency Domain</b>	
11.21	Fourier Analysis ..... 475
11.22	Response of Single Degree of Freedom Undamped System to a Periodic Force ..... 476
<b>F. Multi-degree of Freedom System</b>	
11.23	Orthogonality of Modes ..... 478

11.24	Normal Mode Method ..... 480
11.24.1	Normalization ..... 480
11.25	Response of MDOF System ..... 481
	<i>Objective Brain Teasers</i> ..... 483

## Chapter 12 Suspended Cables .....487

### A. Cables

12.1	Equation of the Cable ..... 488
12.2	Horizontal Tension in Cables ..... 489
12.3	Tension in Cable ..... 490
12.4	Cable Passed Over Guide Pulley at the Support ..... 491
12.5	Cable Clamped to Saddle Carried on Smooth Rollers on the Top of the Pier ..... 492
12.6	Curved Length of the Cable ..... 492

### B. Cable Supports at Different Levels

12.7	Tension in Cable Supported at Different Levels ..... 496
12.8	Curved Length of Cables ..... 498

### C. Temperature Change Effect on Cable

#### D. Nonuniform Load

#### E. Stiffening Girder

12.9	Suspension Cable with Three Hinged Stiffening Girder ..... 502
12.9.1	Single Concentrated Load ..... 502
12.10	Suspension Cable with Two Hinged Stiffening Girder ..... 505
	<i>Objective Brain Teasers</i> ..... 508

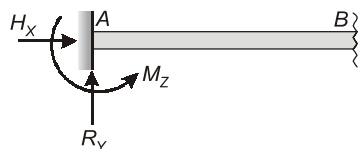


# Stability and Indeterminacy

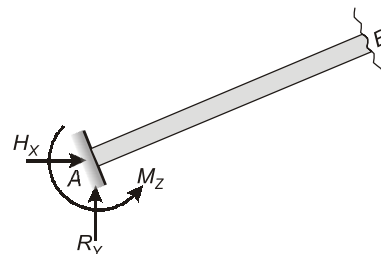
## 1.1 Support System

### 1.1.1 2-D Supports

#### (a) Fixed Support



**Fig. 1.1 (i)** Number of reaction = 3



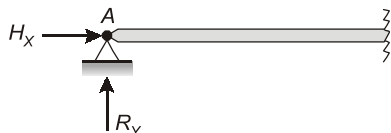
**Fig. 1.1 (ii)** Number of reactions = 3

At 2-D fixed support, there can be three reactions:

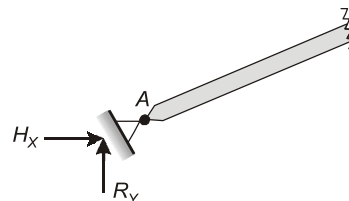
- (i) one vertical reaction ( $R_y$ )
- (ii) one horizontal reaction ( $H_x$ )
- (iii) one moment reaction ( $M_z$ )

#### (b) Hinge Support

Hinge support is represented by the symbol .



**Fig. 1.2 (i)** Number of reactions = 2



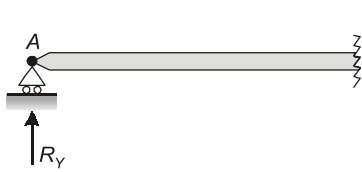
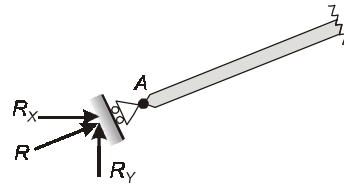
**Fig. 1.2 (ii)** Number of reactions = 2

At hinged support, there can be two reactions:

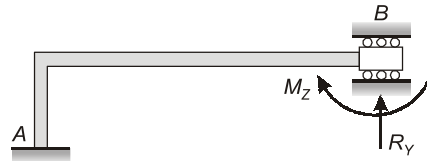
- (i) one horizontal reaction ( $H_x$ )
- (ii) one vertical reaction ( $R_y$ )

**(c) Roller Support**

Roller support is represented by the symbol  or .

**Fig. 1.3 (i)** Number of reactions = 1**Fig. 1.3 (ii)** Number of reactions = 1

At roller support there can be only one externally independent reaction which is normal to the contact surface.

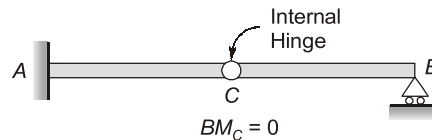
**(d) Guided Roller Support****Fig. 1.4** Number of reactions = 2

At guided roller supports there can be two reactions:

- (i) one vertical reaction ( $R_y$ )      (ii) one moment reaction ( $M_z$ )

**1.1.2 2-D Internal Joints****(a) Internal Hinge**

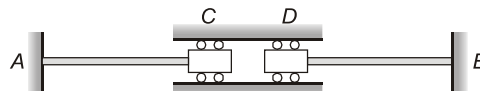
At internal hinge bending moment will be zero.

**Fig. 1.5**

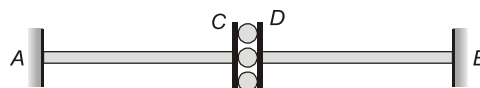
**NOTE:** An internal hinge provides one additional equilibrium equation for structures.

**(b) Internal Roller**

At internal roller either axially force or shear force will be zero.

**Fig. 1.6**

In fig. 1.6, axially force at C and D is zero.

**Fig. 1.7**

In fig. 1.7, shear force at C and D will be zero i.e.,  $S_C = S_D = 0$

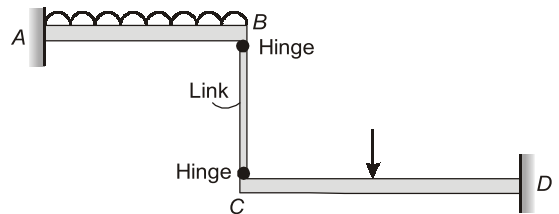


**(c) Internal Link**

If any member is connected by hinges at its end and subjected to no external loading in between then it can be termed as internal link and carry axial force only.

Here  $BC$  is a link, link  $BC$  carry only axial force

Also  $BM_B = 0$  and  $BM_C = 0$



**Fig. 1.8**

**NOTE:** Internal release also provides additional equation for analysis of structure.

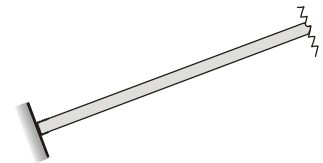
**1.1.3 3-D Supports**

**(a) Fixed Support**

At 3-D fixed support there can be six reactions:

- (i) three reactions  $R_x, R_y$  and  $R_z$
- (ii) three moment reactions  $M_x, M_y$  and  $M_z$

The fixed support are also called **Built-in support**.



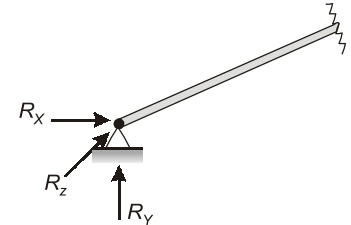
**Fig. 1.9: Number of reactions = 6**

**(b) 3-D Hinged Support**

At 3-D hinged support there can be three reactions

- (i)  $R_x$
- (ii)  $R_y$
- (ii)  $R_z$

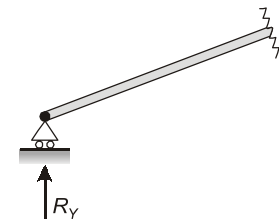
The 3-D hinged support is also called 'ball and socket joint'.



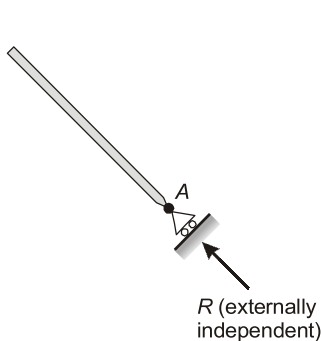
**Fig. 1.10 Number of reactions = 3**

**(c) Roller Support**

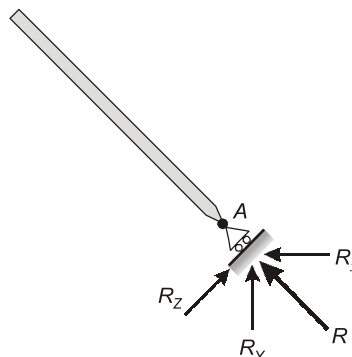
At 3-D roller support there can be only one externally independent reaction which is perpendicular to the contact surface



**Fig. 1.11 Number of reactions = 1**



**Fig.1.12 (i)**



**Fig.1.12 (ii)**

in figure 1.12.(ii), reactions at roller support  $A, R_x, R_y$  and  $R_z$  are externally dependent reactions which depends on reaction  $R$ .

## 1.2 Structure

### 1.2.1 Elements of Structure

Some of the major elements of structure by which structures are fabricated are as follows:

(a) **Beams:** Beams are structural members which is predominantly subjected to bending. On the basis of support system beams can be classified as:

(i) Simply supported beam



Fig. 1.13

(ii) Cantilever beam



Fig. 1.14

(iii) Propped cantilever



Fig. 1.15

(iv) Fixed beam



Fig. 1.16

(v) Continuous beam

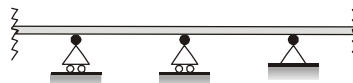


Fig. 1.17

(b) **Columns:** A column is a vertical compression member which is slender and straight. Generally columns are subjected to axial compression and bending moment as shown in figure.

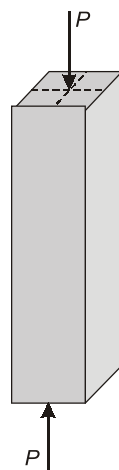


Fig. 1.18 (i)

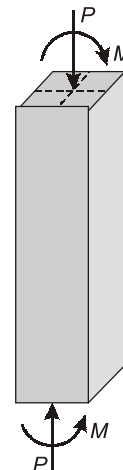


Fig. 1.18 (ii)

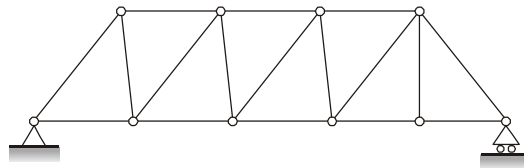
- (c) **Tie Members:** Tie members are tension members of trusses and frame, which are subjected to axial tensile force. (Figure : 1.19)



**Fig. 1.19** Tie Rod

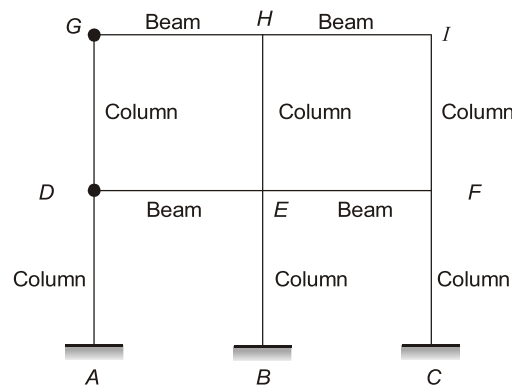
**1.2.2 Types of Structures**

- (a) **Trusses:** A truss is constructed from pin jointed slender members, usually arranged in triangular manner. In trusses, loads are applied on joints due to which each member of truss subjected to only axial forces i.e., either axial compression or axial tension. Generally trusses are used when span of structure is large.



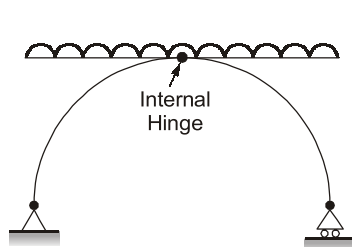
**Fig. 1.20** Truss

- (b) **Frames:** A frame is constructed from either pin jointed or fixed jointed beam and columns. Generally loads are applied on beams and this loading causes axial force, shear force and bending to the members of frame.

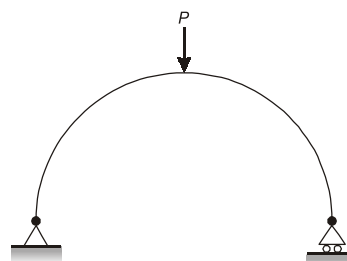


**Fig. 1.21** Frames

- (c) **Arches:** Arches are used in bridges, dome roof, auditorium, where span of structures are relatively more due to external loading, Arch can be subjected to axial compression, shear force or bending moment.



**Fig. 1.22 (i)** Three Hinge Arch



**Fig. 1.22 (ii)** Two Hinge Arch

- (d) **Cables:** Cables are used to support long span bridges. Cables are flexible members and due to external loading it is subjected to axial tension only.

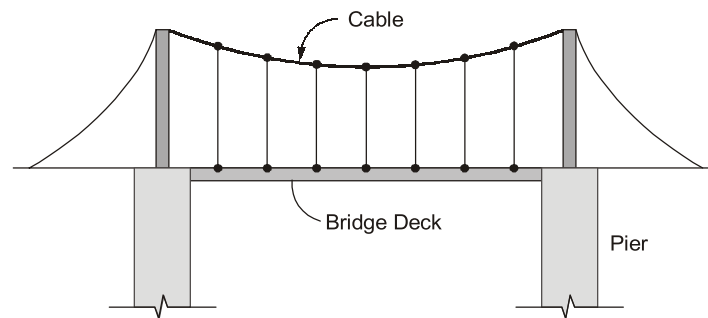


Fig. 1.23 Cable and Bridge

### 1.3 Types of Loading

- (a) **Point load:** A point load is considered to be acting at a point. It is also called concentrated load. In actual practice point loads are distributed load which are distributed over very small area.

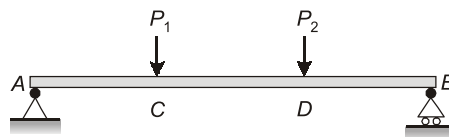


Fig. 1.24 Point Load

- (b) **Distributed loads:** Distributed loads are those loads, which acts over some measurable area. Distributed loads are measured by the intensity of loading per unit length along the beam.

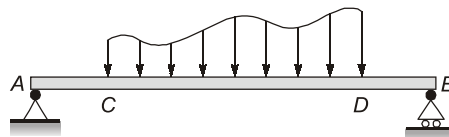


Fig. 1.25 Distributed Loads

- (c) **Uniformly distributed loads:** Uniformly distributed loads are those distributed loads which have uniform intensity of loading over the area.

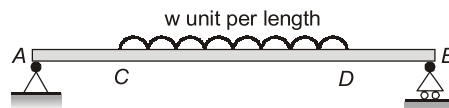


Fig. 1.26 Uniformly Distributed Loads

- (d) **Uniformly varying loads :** A uniformly varying load, commonly abbreviated as UVL, is the one in which the intensity of loading varies from one end to other. For example, intensity is zero at one end and  $w$  at other end.

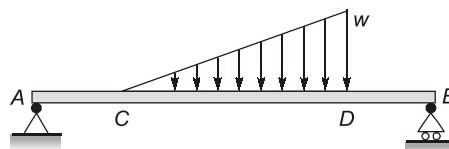
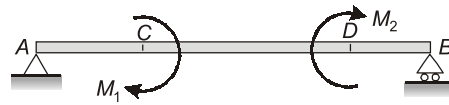


Fig. 1.27 Uniformly Varying Loads

- (e) **Couple :** A system of forces with resultant moment, but no resultant force is called couple. It is statically equivalent to force times the offset distance.



**Fig. 1.28 Couple**

## 1.4 Stability of Structures

Structural stability is the major concern of the structural designer. To ensure the stability, a structure must have enough support reaction along with proper arrangement of members. The overall stability of structures can be divided into

- (i) External stability
- (ii) Internal stability

### 1.4.1 External Stability

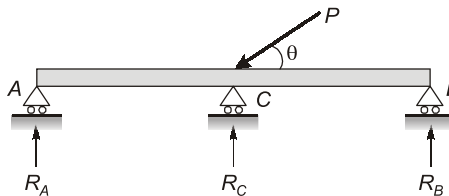
- (a) **2-D Structures:** For stability of 2-D structures there should be no rigid body movement of structure due to loading so, it should have support in  $x$ -direction,  $y$ -direction and no rotation in  $x$ - $y$  plane. So there should be enough reactions to restrain the rigid body motion.

For stability of 2-D structures, following three conditions of static equilibrium should be satisfied.

- (i)  $\Sigma F_x = 0$  (To prevent  $\Delta_x$ )
- (ii)  $\Sigma F_y = 0$  (To prevent  $\Delta_y$ )
- (iii)  $\Sigma M_z = 0$  (To prevent  $\theta_z$ )

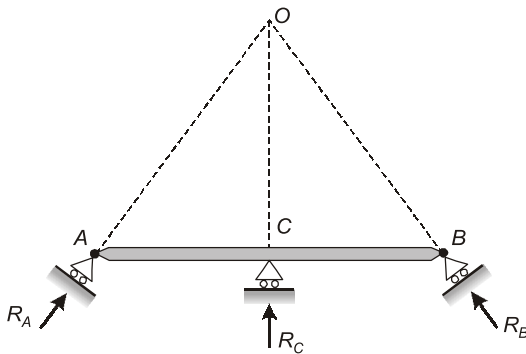
For stability in 2-D structures following conditions also be satisfied:

- (i) There should be minimum three number of externally independent support reaction.
- (ii) All reactions should not be parallel, otherwise linearly instability will set up.

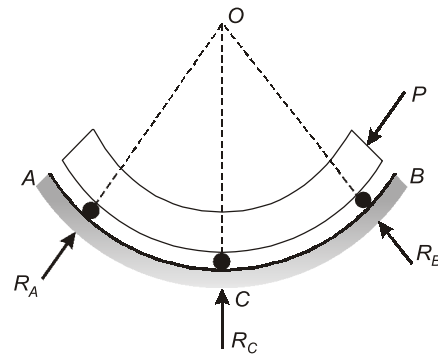


**Fig. 1.29 Unstable**

- (iii) All reactions should not be linearly concurrent otherwise rotational instability will setup.



**Fig. 1.30 (i) Unstable**



**Fig. 1.30 (ii) Unstable**

(iv) Reactions should be non-trivial i.e. there should be enough magnitude and enough difference between them.

**(b) 3-D Structures:** In case of 3-D structures, there should be a minimum of six independent external reactions to prevent rigid body displacement of structure. The displacement to be prevented are:  $\Delta_x, \Delta_y, \Delta_z, \theta_x, \theta_y$  and  $\theta_z$ . Therefore, there will be six equation of static equilibrium.

(i)  $\Sigma F_x = 0$

(ii)  $\Sigma F_y = 0$

(iii)  $\Sigma F_z = 0$

(iv)  $\Sigma M_x = 0$

(v)  $\Sigma M_y = 0$

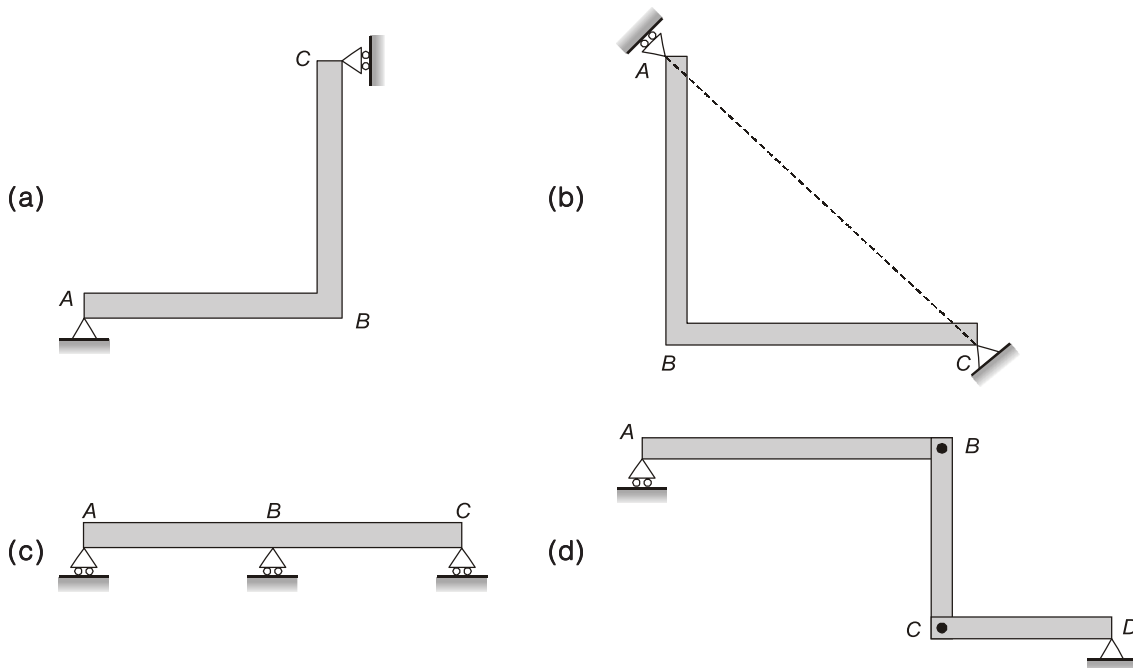
(vi)  $\Sigma M_z = 0$

For stability in 3-D structures, all the reactions should be non-coplanar, non-concurrent and non-parallel.

**Remember:** If a structure is constructed from elastic members then small elastic displacement may be permitted but small rigid body displacement will not be permitted.

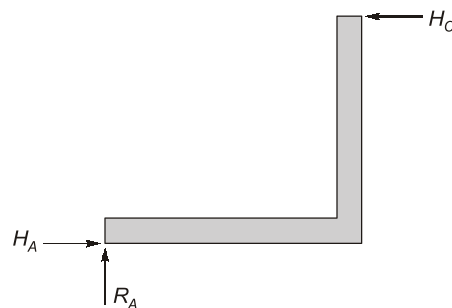
### Example 1.1

Which one of the following structures is stable?

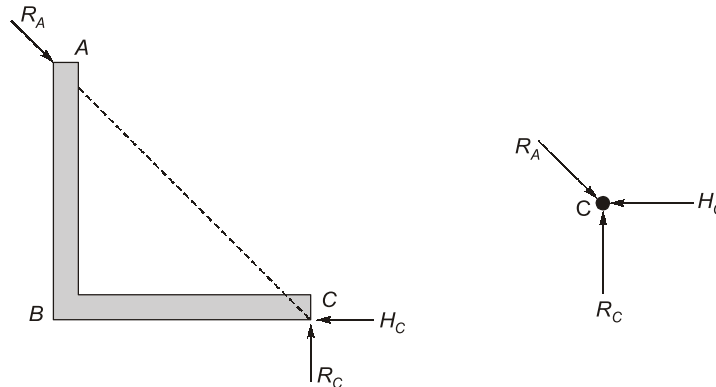


**Ans. (a)**

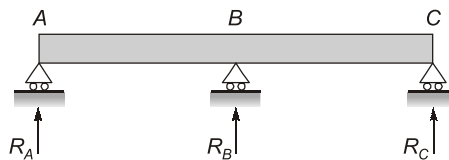
Member (a) is stable, since reactions are non-parallel and non-concurrent.



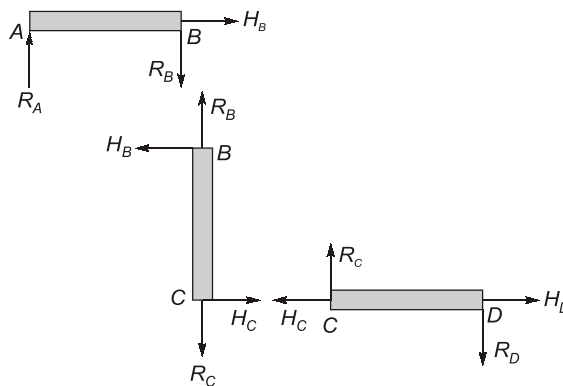
Member (b) is unstable since all the reactions are concurrent at C.



Beam (c) is unstable, since all three reactions are parallel.



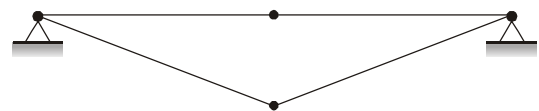
Structure (d) is unstable, since the member AB can move horizontally without any restraint. i.e.  $\Sigma F_x \neq 0$



### 1.4.2 Internal Stability

For the internal stability, no part of the structure can move rigidly relative to the other part so that geometry of the structure is preserved, however small elastic deformations are permitted. To preserve geometry, enough number of members and their adequate arrangement is required. For the geometric stability, there should not be any condition of mechanism. Mechanism is formed when there are three collinear hinges, hence to preserve geometric stability there should not be three collinear hinges.

For 2-D truss the minimum number of members needed for geometric stability are:



**Fig. 1.31**

$$m = 2j - 3$$

and for 3-D truss,

$$m = 3j - 6$$

where,  $j$  = Number of joint in truss

$m$  = Member required for geometrical stability.

All the members should be arranged in such a way that truss can be divided into triangular blocks. i.e. no rectangular or polygonal blocks.

Hence, for overall geometrical stability of truss:

(i) Minimum number of member should be present

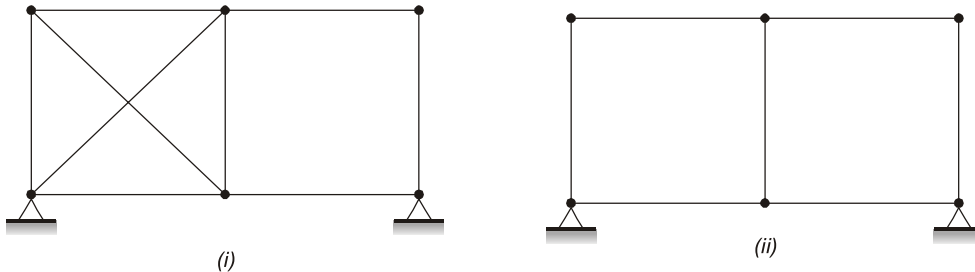
$$m = 2j - 3 \quad (2\text{-D truss})$$

and  $m = 3j - 6 \quad (3\text{-D truss})$

(ii) There should be no condition of mechanism i.e. no three collinear hinges.

### Example 1.2

Check geometrical stability for given trusses.



#### Solution:

(i) In case (i), arrangement of members is not adequate, hence right panel is unstable and left panel is over stiff. For geometric stability, all panels of truss should be stable so given truss is geometrical unstable.

For right panel:  $j = 4$

Number of member present,  $m = 4$

But minimum number of member needed  $= 2j - 3 = 2 \times 4 - 3 = 5$

Hence Right panel is deficient.

For left panel:  $j = 4$

Number of member present,  $m = 6$

But minimum number of member needed  $= 2j - 3 = 2 \times 4 - 3 = 5$

Hence left panel is over stiff.

(ii)  $j = 6$

Number of members present,  $m = 7$

But minimum number of member needed  $= 2j - 3 = 2 \times 6 - 3 = 9$

Hence, above truss is geometrically unstable and it can be called 'deficient structure'.

$\therefore$  Number of deficiency  $= 2$